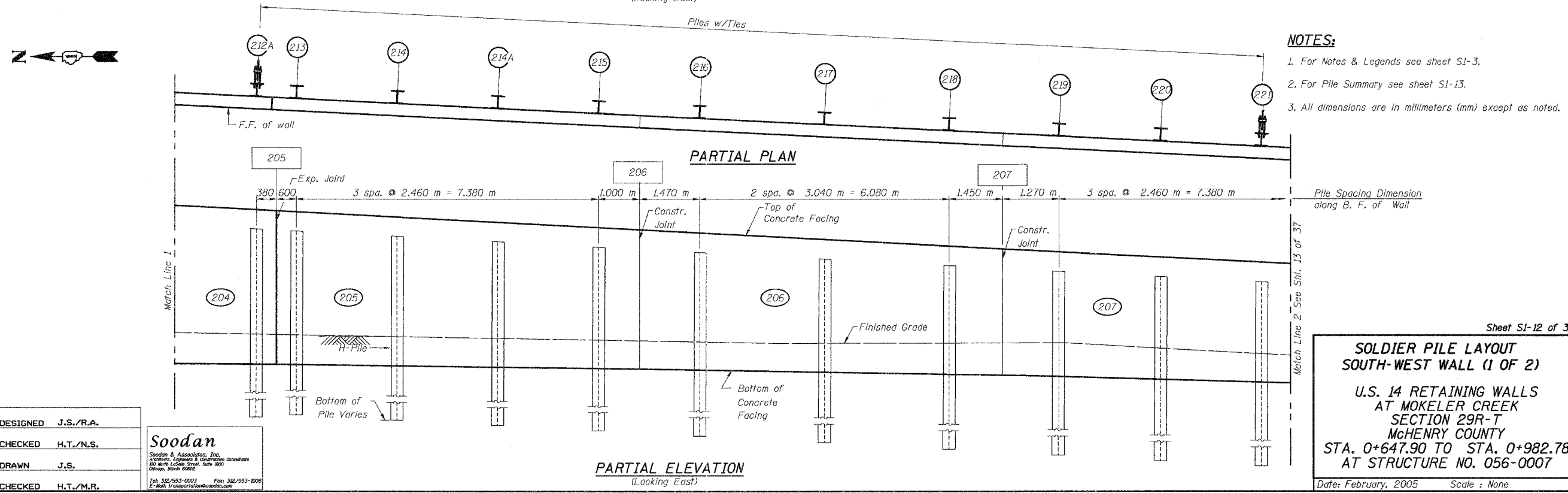
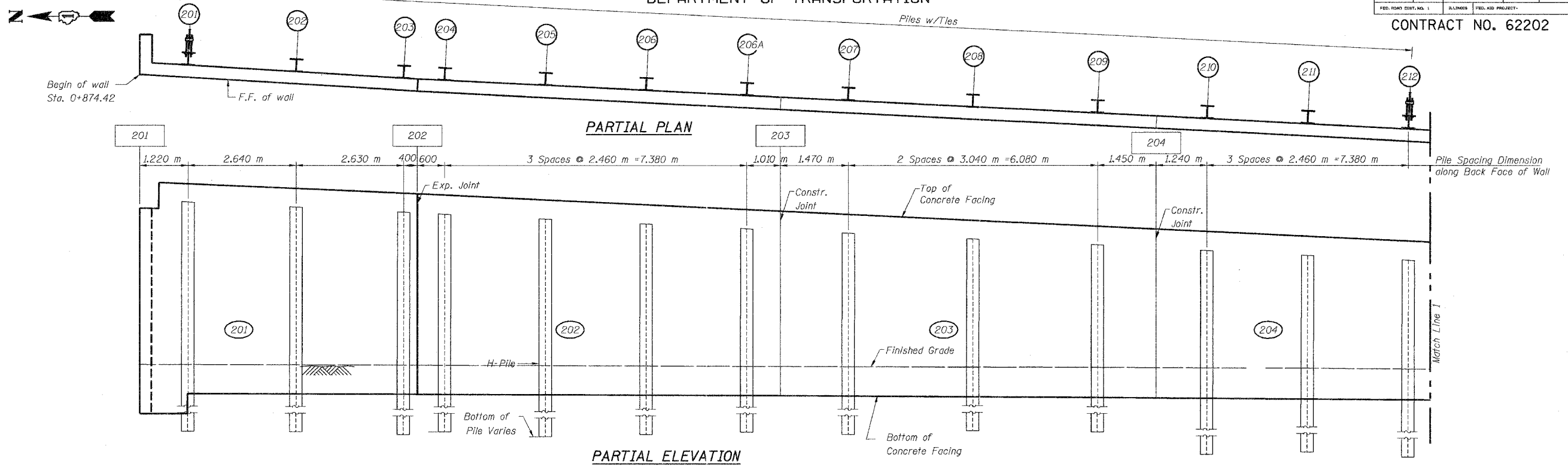


STATE OF ILLINOIS  
DEPARTMENT OF TRANSPORTATION

ROUTE NO.	DISTRICT	COUNTY	SHEET	TOTAL SHEETS
299-T	383	McHENRY	88	51
FED. ROAD DIST. NO. 1		ILLINOIS FED. AID PROJECT		

CONTRACT NO. 62202



**NOTES:**

1. For Notes & Legends see sheet SI-3.
2. For Pile Summary see sheet SI-13.
3. All dimensions are in millimeters (mm) except as noted.

DESIGNED J.S./R.A.  
CHECKED H.T./N.S.  
DRAWN J.S.  
CHECKED H.T./M.R.

**Soodan**  
Soodan & Associates, Inc.  
Civil, Structural, & Geotechnical Consultants  
100 North LaSalle Street, Suite 2800  
Chicago, Illinois 60602  
Tel: 312/253-0003 Fax: 312/553-1005  
E-Mail: transport@soodan.com

Sheet SI-12 of 37

**SOLDIER PILE LAYOUT  
SOUTH-WEST WALL (1 OF 2)**

U.S. 14 RETAINING WALLS  
AT MOKELER CREEK  
SECTION 29R-T  
McHENRY COUNTY  
STA. 0+647.90 TO STA. 0+982.78  
AT STRUCTURE NO. 056-0007

Date: February, 2005 Scale: None