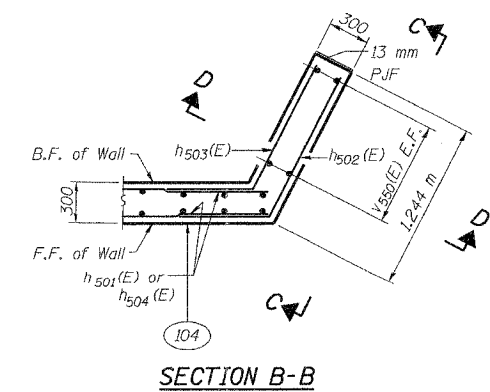
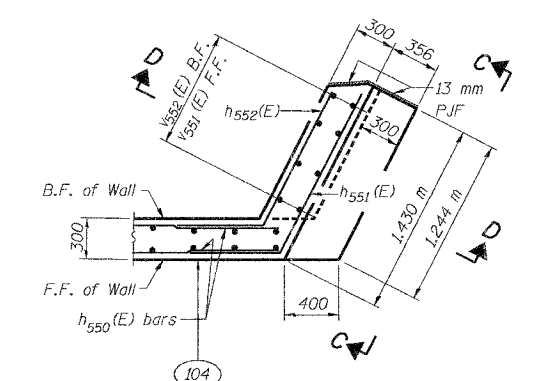
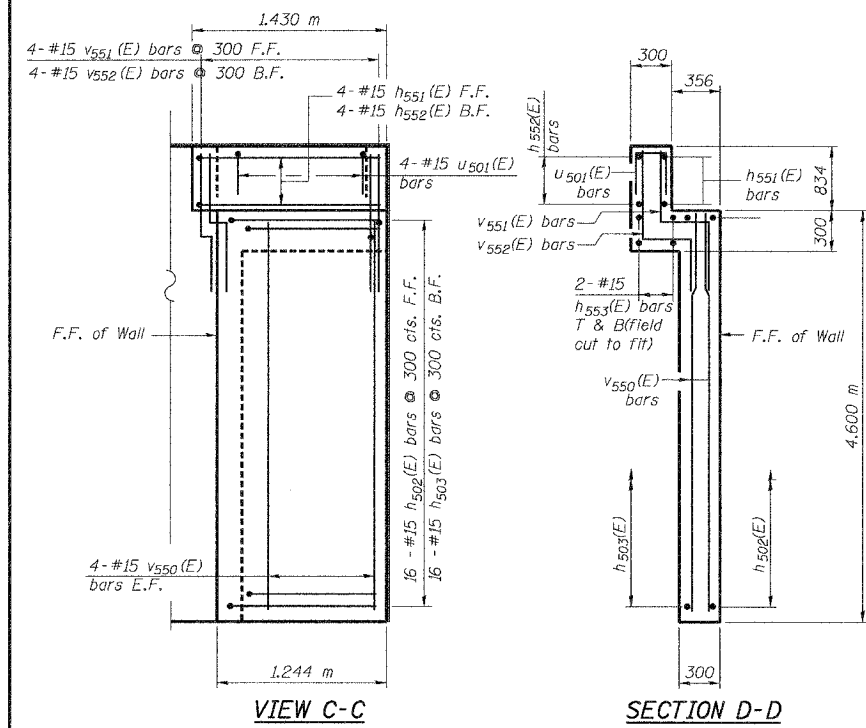
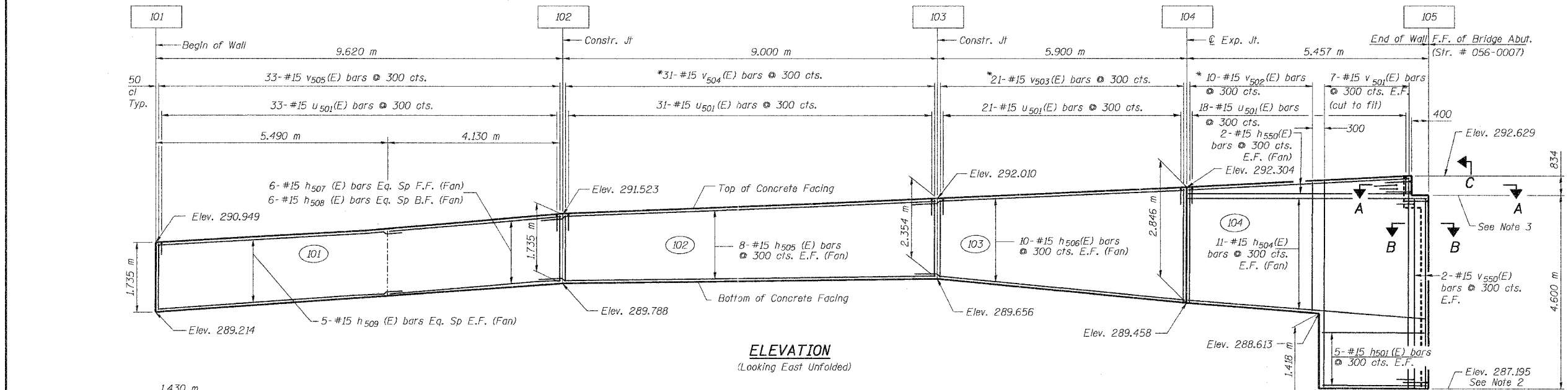


STATE OF ILLINOIS  
DEPARTMENT OF TRANSPORTATION

PROJECT NO.	SECTION	COUNTY	SHEET	TOTAL SHEETS
D. A. L.	29R-T	McHENRY	86	54
F. A. P. 383				
FED. ROAD DIST. NO. 1	ILLINOIS	FED. AID PROJECT-		

CONTRACT NO. 62202



**MIN. LAP**  
#15= 640 mm

- NOTES:**
- For Notes & Legend see sheet S1-3.
  - Match bottom of wall to the top of existing abutment footing elevation.
  - Match top of wall to existing bridge seat elevation.
  - All dimensions are in millimeters (mm) except as noted.

\*Order v<sub>502</sub>(E) thru v<sub>504</sub>(E) full length. Cut to fit and use the remainder of bars in other face.

DESIGNED	J.S./R.A.	<b>Soodan</b> Soodan & Associates, Inc. Architects, Engineers & Construction Consultants 150 North LaSalle Street, Suite 2000 Chicago, Illinois 60602 Tel: 312/253-0003 Fax: 312/253-8006 E-Mail: transportation@soodan.com
CHECKED	H.T./N.S.	
DRAWN	J.S./B.I.D.	
CHECKED	H.T./M.R.	

Sheet S1-15 of 37

**CONCRETE FACING  
NORTH-WEST WALL**

U.S. 14 RETAINING WALLS  
AT MOKELER CREEK  
SECTION 29R-T  
McHENRY COUNTY  
STA. 0+647.90 TO STA. 0+982.78  
AT STRUCTURE NO. 056-0007

Date: February, 2005 Scale: None