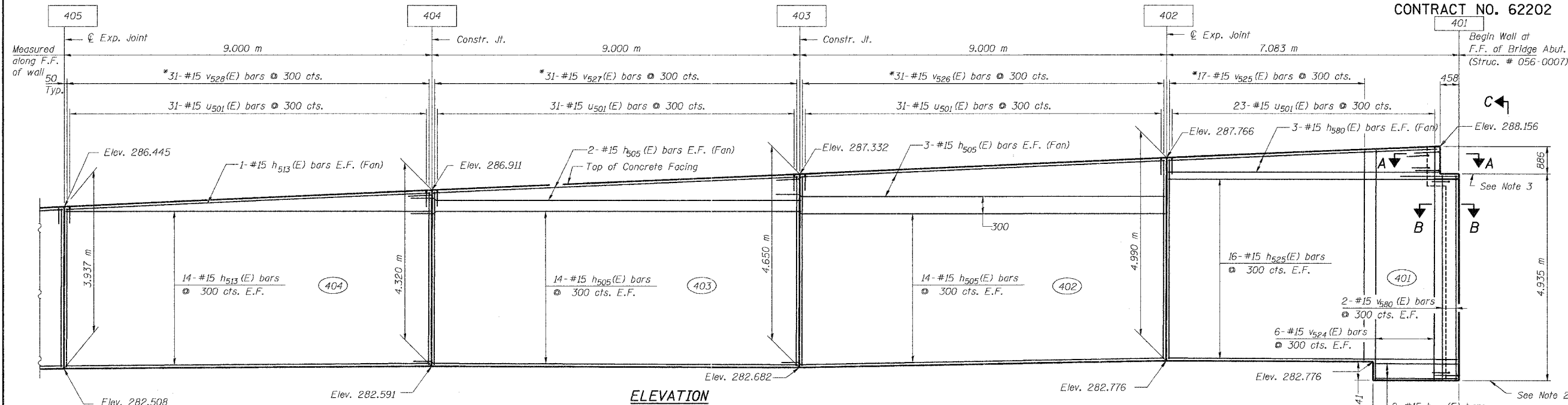


STATE OF ILLINOIS
DEPARTMENT OF TRANSPORTATION

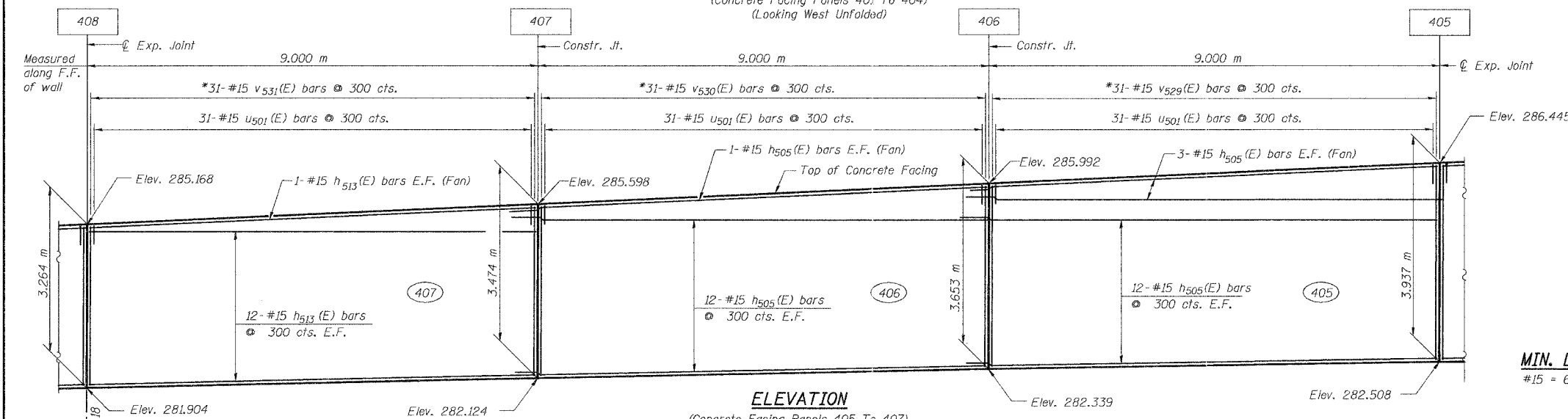
ROUTE NO.	SECTION	COUNTY	SHEET	TOTAL
299-T	299-T	McHENRY	88	56
F.L.P. 383		ILLINOIS PROJECT		
FED. ROAD DIST. NO. 1		FED. AID PROJECT		

CONTRACT NO. 62202



ELEVATION

(Concrete Facing Panels 401 To 404)
(Looking West Unfolded)



ELEVATION

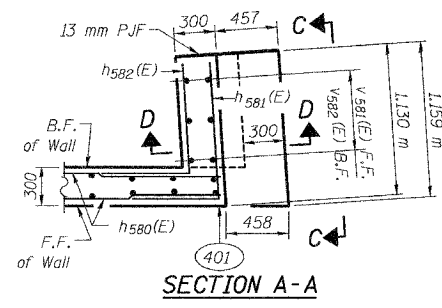
(Concrete Facing Panels 405 To 407)
(Looking West Unfolded)

* Order v524(E) thru v531(E) bars full length, cut to fit and use the remainder of bars in other face.

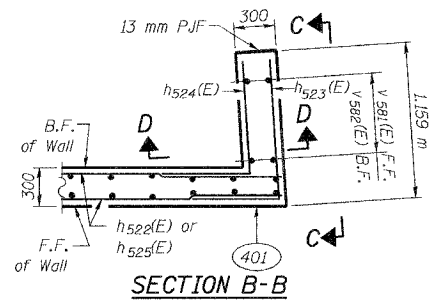
MIN. LAP
#15 = 640 mm

NOTES:

1. For Notes & Legend see sheet S1-3.
2. Match bottom of wall to the top of existing abutment footing elevation.
3. Match top of wall to existing bridge seat elevation.
4. For View C-C and Section D-D see Sheet S1-18.
5. All dimensions are in millimeters (mm) except as noted.



SECTION A-A



SECTION B-B

DESIGNED	J.S./R.A.	Soodan Soodan & Associates, Inc. Architects, Engineers & Construction Consultants 120 North Lincoln Street, Suite 3000 Chicago, Illinois 60602 Tel: 312/253-0003 Fax: 312/253-2006 E-Mail: transport@soodan.com
CHECKED	H.T./N.S.	
DRAWN	J.S./B.I.D.	
CHECKED	H.T./M.R.	

Sheet S1-17 of 37

CONCRETE FACING
SOUTH-EAST WALL (1 of 2)

U.S. 14 RETAINING WALLS
AT MOKELEER CREEK
SECTION 299-T
McHENRY COUNTY
STA. 0+647.90 TO STA. 0+982.78
AT STRUCTURE NO. 056-0007

Date: February, 2005 Scale : None