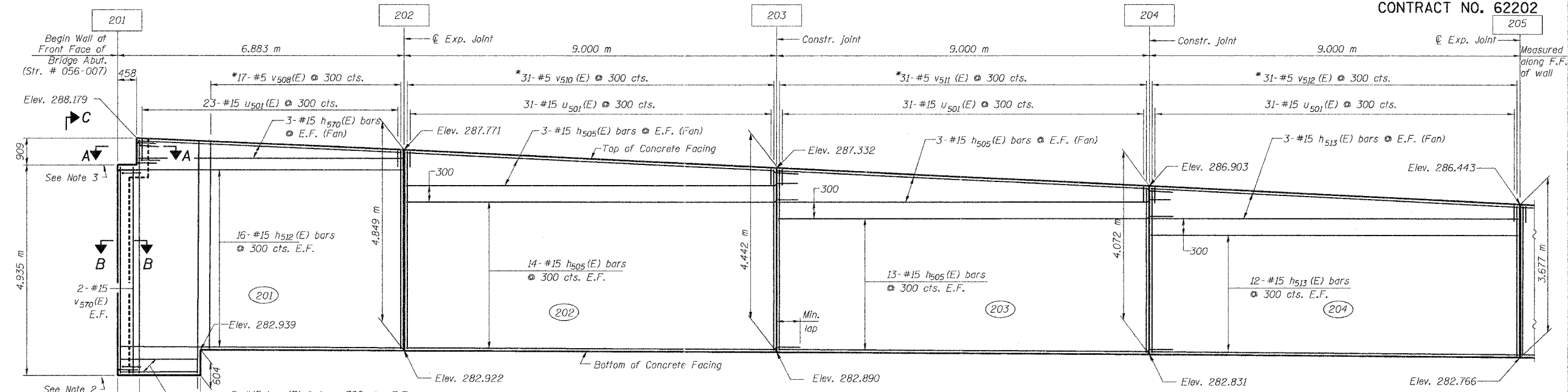


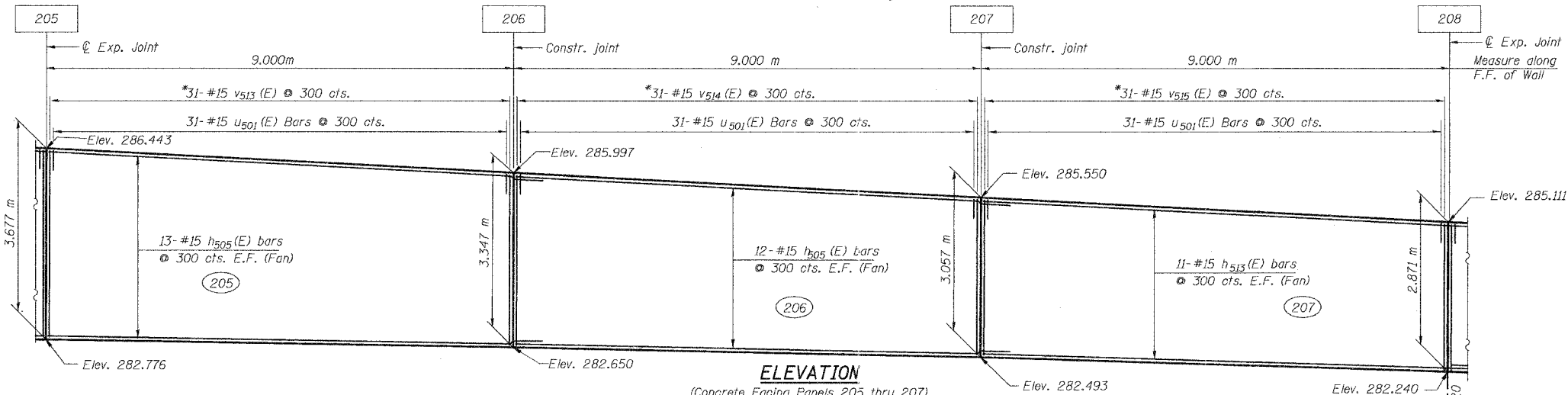
STATE OF ILLINOIS  
DEPARTMENT OF TRANSPORTATION

PROJECT NO.	SECTION	COUNTY	SHEETS	NO.
S.A.P. 383	29R-T	McHENRY	88	58
FED. ROAD DIST. NO. 1	ILLINOIS	FED. AID PROJECT		

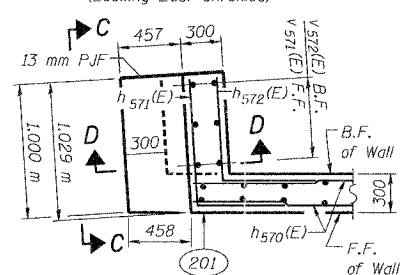
CONTRACT NO. 62202



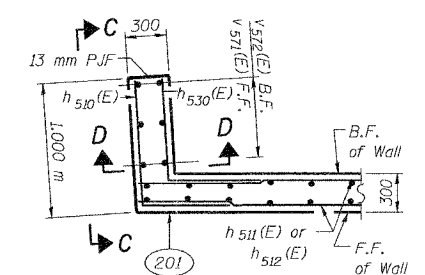
**ELEVATION**  
(Concrete Facing Panels 201 thru 204)  
(Looking East Unfolded)



**ELEVATION**  
(Concrete Facing Panels 205 thru 207)  
(Looking East Unfolded)



**SECTION A-A**



**SECTION B-B**

MIN. LAP  
#15 = 640 mm

- NOTES:**
1. For Notes & Legend see sheet S1-3.
  2. Match bottom of wall to the top of existing abutment footing elevation.
  3. Match top of wall to existing bridge seat elevation.
  4. For View C-C and Section D-D see Sheet S1-20.
  5. All dimensions are in millimeters (mm) except as noted.

\* Order v508(E) and v510(E) thru v515(E) full length. Cut to fit and use the remainder of bars in other face.

DESIGNED	J.S./R.A.
CHECKED	H.T./N.S.
DRAWN	J.S./B.I.D.
CHECKED	H.T./M.R.

**Soodan**  
Soodan & Associates, Inc.  
Architects, Engineers & Construction Consultants  
231 North LaSalle Street, Suite 3000  
Chicago, Illinois 60602  
Tel: 312/953-0003 Fax: 312/953-8006  
E-Mail: transp@soodan.com

Sheet S1-19 of 37

**CONCRETE FACING**  
**SOUTH-WEST WALL (1 of 2)**  
U.S. 14 RETAINING WALLS  
AT MOKELER CREEK  
SECTION 29R-T  
McHENRY COUNTY  
STA. 0+647.90 TO STA. 0+982.78  
AT STRUCTURE NO. 056-0007

Date: February, 2005      Scale : None