

STATE OF ILLINOIS
DEPARTMENT OF TRANSPORTATION

ROUTE NO.	SECTION	COUNTY	SHEET	TOTAL
U.S. 14	29R-T	McHENRY	88	78
F.A.P. 383				
FED. ROAD DIST. NO. 1	ILLINOIS	FED. AID PROJECT		

CONTRACT NO. 62202

GENERAL NOTES

Reinforcement bars shall conform to the requirements of AASHTO M 31M or M 322M Grade 420 and Grade 400.

Layout of slope protection system may be varied in the field to suit ground conditions as directed by the Engineer.

Exposed edges shall have a 20mm chamfer unless otherwise noted.

For backfilling and embankment, see standard specifications.

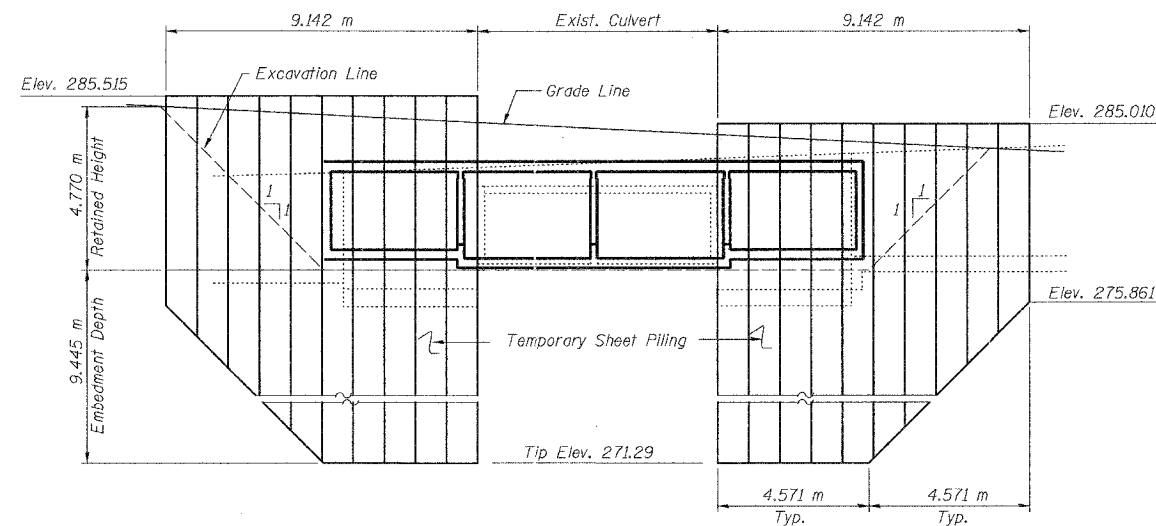
All construction joints shall be bonded.

Precast Culvert alternate is not allowed.

All dimensions are in millimeters (mm) except as noted.

MIN. BAR LAP (mm)

- #13 = 440
- #16 = 550
- #19 = 670
- #22 = 910



TEMPORARY SHEET PILING
Minimum Section Modulus of Sheet Piling = 3600 mm³/m x 10³

TOTAL BILL OF MATERIAL

ITEM	UNIT	SUPER	SUB	TOTAL
Concrete Box Culverts	cu.m	—	274.1	274.1
Removal of Existing Structures	Each	—	1	1
Reinforcement Bars	kg	—	37770	37770
Stone Riprap, Class A4	sq.m	—	136	136
Temporary Sheet Piling	sq.m	—	234.6	234.6
Name Plates	Each	1	—	1
Bar splicers	Each	—	265	265
Aluminum Railing, Type L	m	31.6	—	31.6
Breaker-Run Crushed Stone	m ton	—	162	162
Filter Fabric for use with Riprap	sq.m	—	136	136
* Concrete Superstructure	cu.m	32.1	—	32.1
* Reinforcement Bars, Epoxy Coated	kg	2,670	—	2,670
* Protective Coat	sq.m	95	—	95

* Include: Parapet and Sidewalk Slab.

INDEX OF SHEETS

SHEET NO.	TITLE
1.	General Plan
2.	General Notes and Bill of Material
3.	Culvert Plan
4.	Culvert Details
5.	Bar Splicer Assembly Details
6.	Parapet and Sidewalk Slab
7.	Type L Aluminum Railing
8.	Boring Logs

Sheet S2-2 of 8

**GENERAL NOTES AND
BILL OF MATERIAL**

U.S. ROUTE 14
OVER MOKELER CREEK
SECTION 29R-T
McHENRY COUNTY
STA. 0+956.56
STRUCTURE NO. 056-0076

Date: February, 2005 Scale: None

DESIGNED	J.S. / R.A.
CHECKED	H.T. / N.U.S
DRAWN	J.S.
CHECKED	H.T./M.R.

Soodan
Soodan & Associates, Inc.
Architects, Engineers & Construction Consultants
221 North Lincoln Street, Suite 2000
Chicago, Illinois 60602
Tel: 312/553-0223 Fax: 312/553-8006
E-Mail: transportation@soodan.com