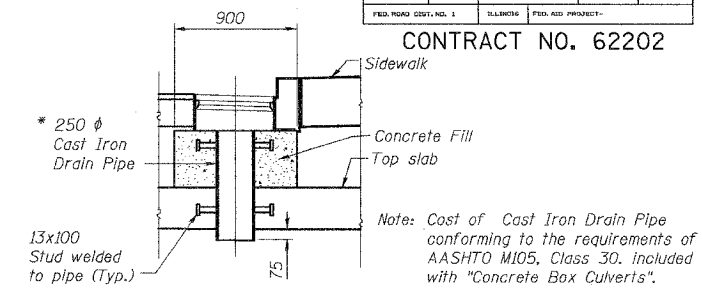
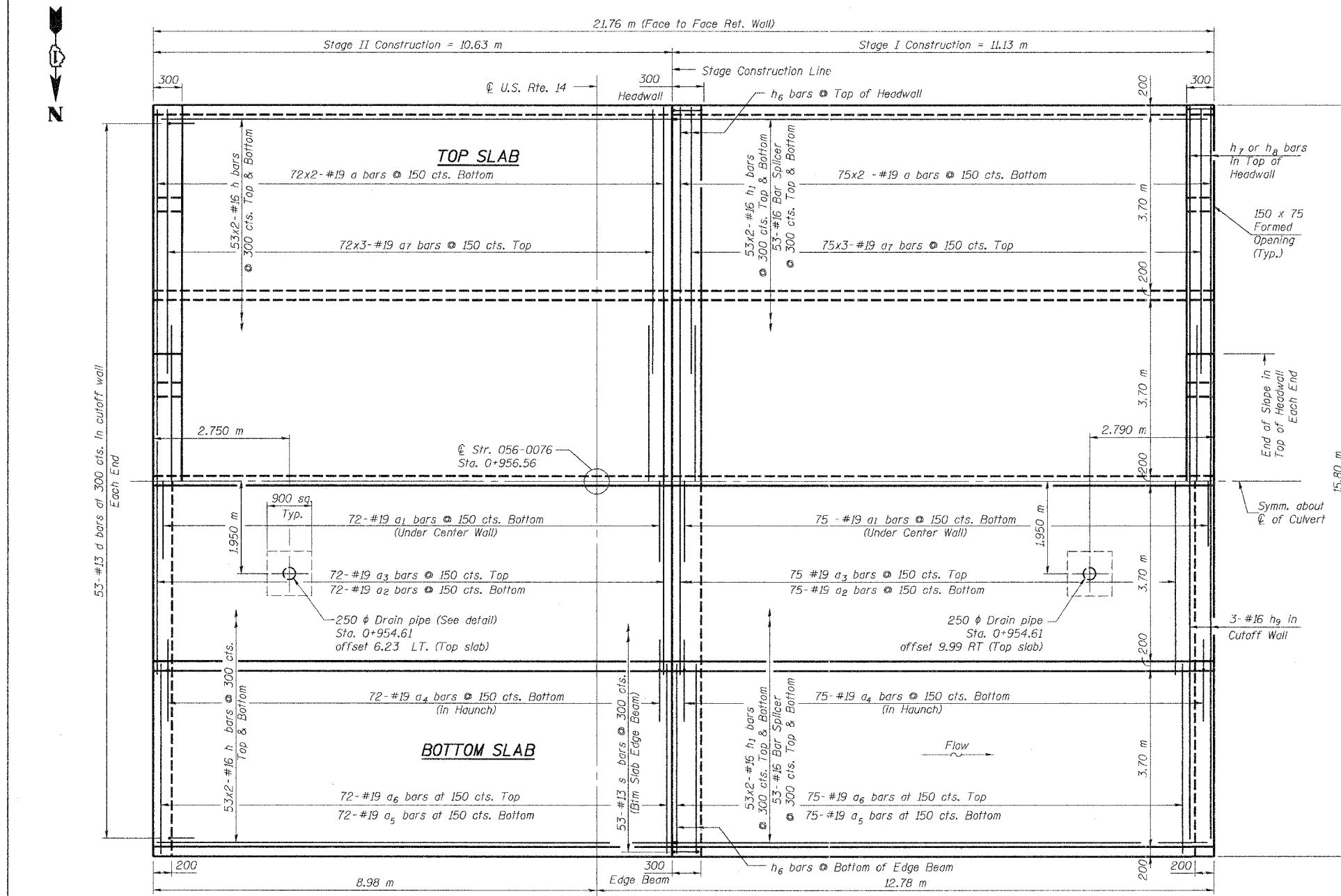


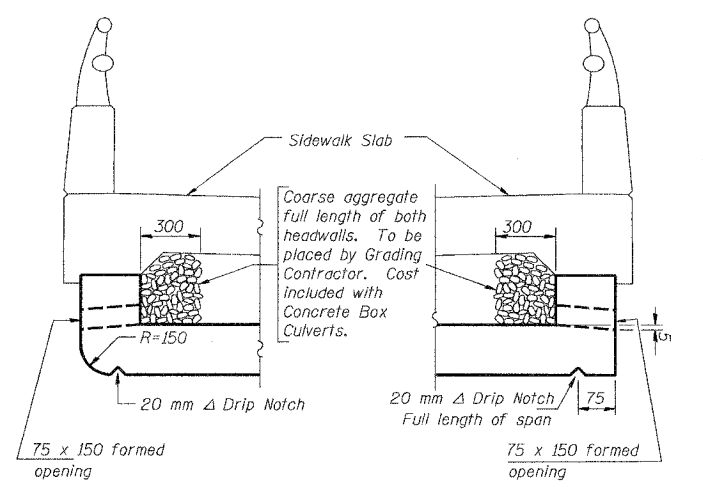
STATE OF ILLINOIS
DEPARTMENT OF TRANSPORTATION

ROUTE NO.	SECTION	COUNTY	SHEET	TOTAL SHEETS
U.S. Rte. 14	29R-T	McHENRY	88	79
FED. ROAD DIST. NO. 1	ILLINOIS	FED. AID PROJECT		

CONTRACT NO. 62202



DRAIN PIPE DETAIL



AT UP STREAM END AT DOWN STREAM END
DRAIN DETAIL

- Notes:
1. Bars indicated thus 12x4 - #15 etc. indicates 12 lines of bars with 4 lengths per line.
 2. All dimensions are in millimeters (mm) except as noted.
 3. For Bill of Material and Sections See Sheet S2-4 of 8.

PLAN

DESIGNED	J.S. / R.A.
CHECKED	H.T. / N.U.S
DRAWN	J.S.
CHECKED	H.T./M.R.

Soodan
Soodan & Associates, Inc.
Architects, Engineers & Construction Consultants
222 North LaSalle Street, Suite 2000
Chicago, Illinois 60602
Tel: 312/553-0003 Fax: 312/553-0006
E-Mail: transport@soodan.com

Sheet S2-3 of 8

CULVERT PLAN
U.S. ROUTE 14
OVER MOKELER CREEK
SECTION 29R-T
McHENRY COUNTY
STA. 0+956.56
STRUCTURE NO. 056-0076
Date: February, 2005 Scale: None