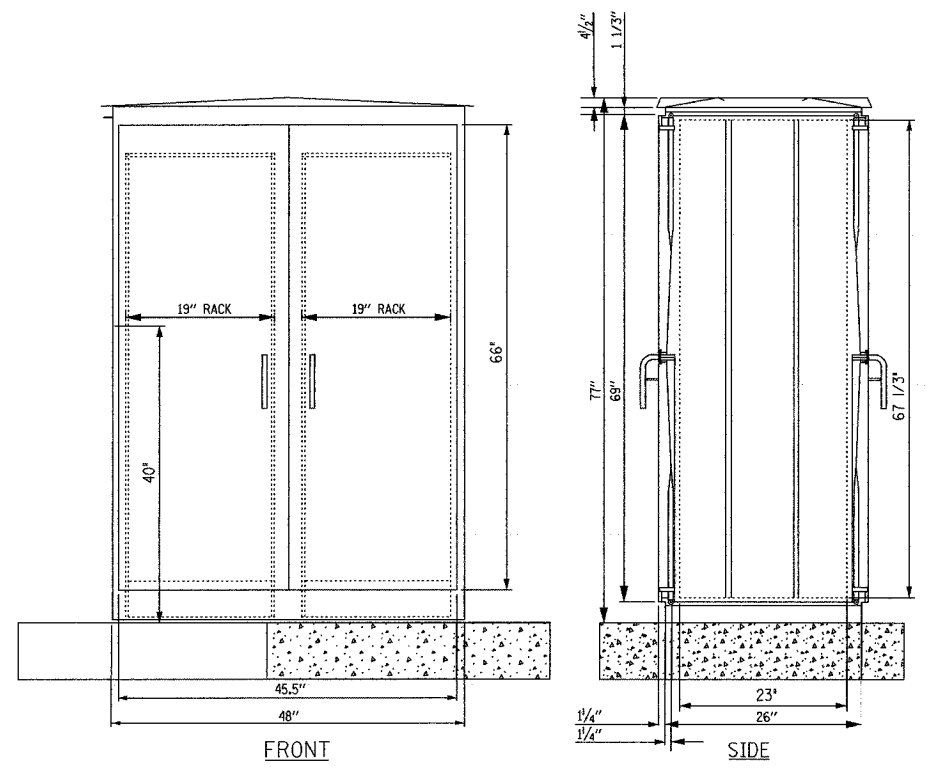
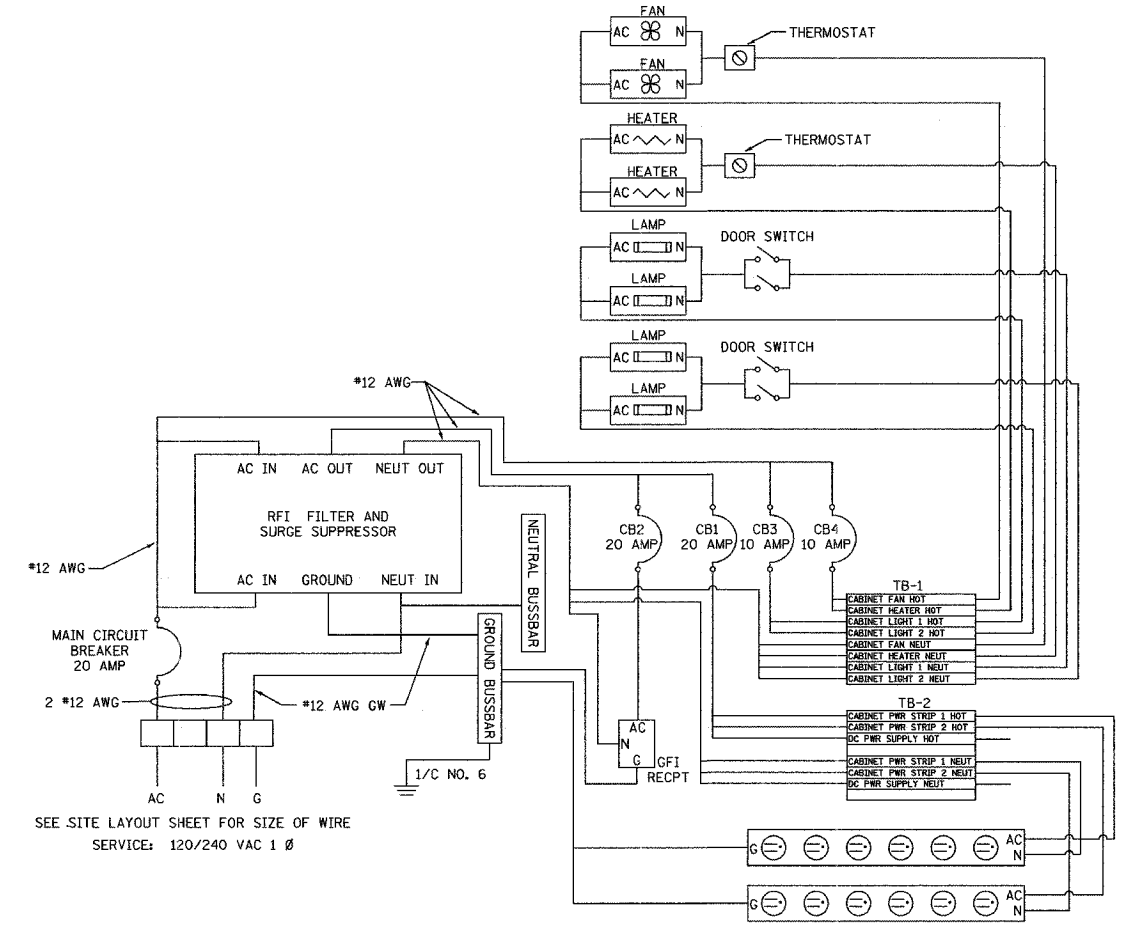


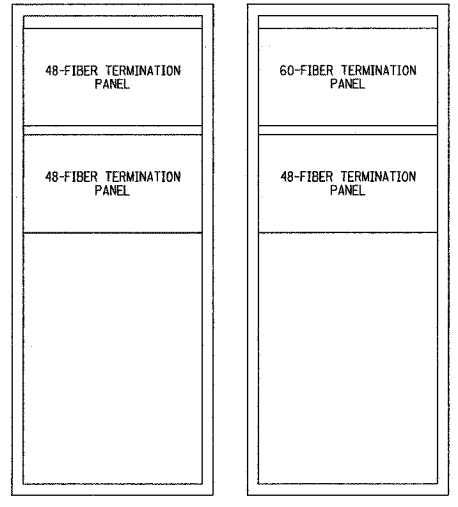
SECTION	COUNTY	TOTAL SHEETS	SHEET NO.
2003-0311	COOK	976	2 F
STA.	TO STA.		
FED. ROAD DIST. NO.	ILLINOIS	FED. AID PROJECT	
62583			



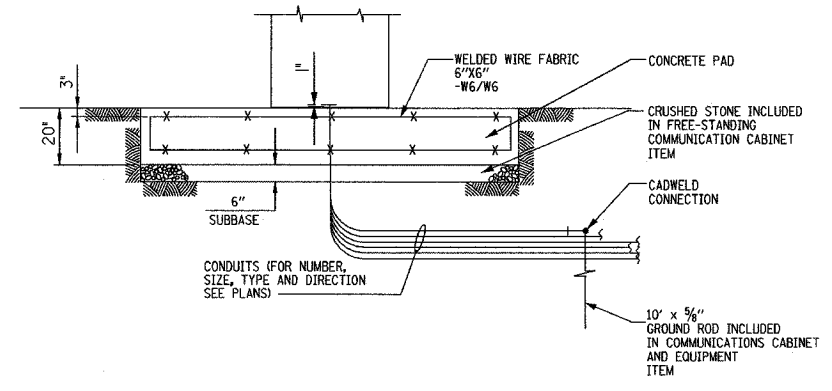
CABINET WITH 19" RACKS



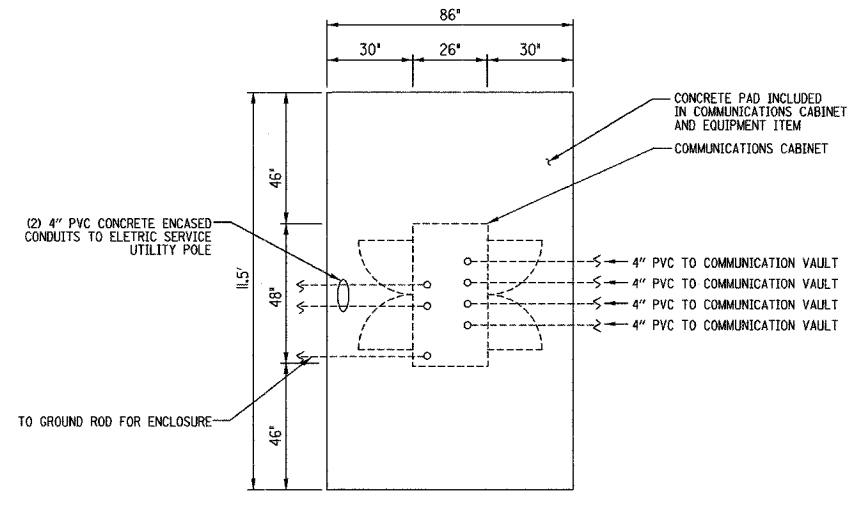
POWER DISTRIBUTION DIAGRAM



EQUIPMENT ELEVATION



SECTION 1-1
SCALE 1:4



PLAN
SCALE 1:4

- NOTES:
- CONTRACTOR SHALL INSTALL THE EQUIPMENT WITH SLIDING EQUIPMENT BRACKETS OR SLIDING SHELVES TO ALLOW ACCESS TO THE BACK. THE DESIGN SHALL BE APPROVED BY THE ENGINEER PRIOR TO INSTALLING THE EQUIPMENT IN THE CABINET.
 - ALL PENETRATIONS THROUGH ENCLOSURES SHALL BE COMPLETELY WATERPROOFED ON BOTH SIDES.
 - GALVANIZED STEEL CONDUITS, STRUT CHANNELS AND MOUNTING HARDWARE SHALL BE PAID FOR UNDER COMMUNICATIONS CABINET AND EQUIPMENT PAY ITEM.

REVISIONS	
NAME	DATE

ILLINOIS DEPARTMENT OF TRANSPORTATION
 F.A.I. 94/90 (DAN RYAN EXPRESSWAY)
 31st STREET to I-57
 DESIGN CHANGES AND
 CLARIFICATIONS

SCALE: NOT TO SCALE
 DATE: MARCH 24, 2005
 DRAWN BY: DHI
 CHECKED BY: MJL

**Edwards
AND
Kelcey**
 ONE NORTH FRANKLIN
 CHICAGO, IL 60606
 PHONE: (312) 251-3000
 FAX: (312) 251-3015
 WEB: WWW.EKCORP.COM

NEW SHEET 3/24/05

F:\030019\035\VTSCADD\vbld drawings\2E.dgn 04/24/05 PM