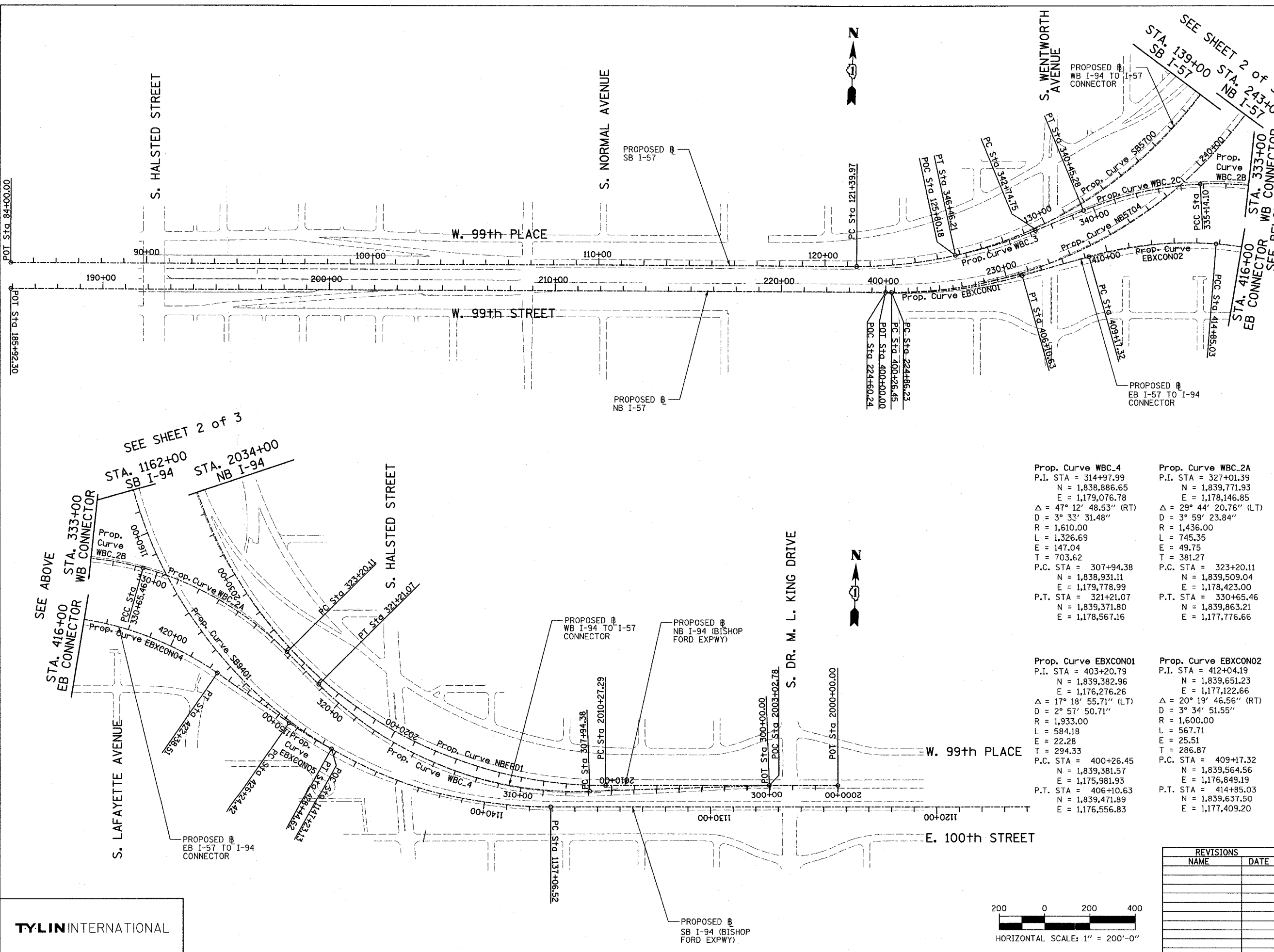


F.A.I. RTE.	SECTION	COUNTY	TOTAL SHEETS	SHEET NO.
90/94	2003-0311	COOK	276	12
STA.		TO STA.		
FED. ROAD DIST. NO.	ILLINOIS	FED. AID PROJECT	62583	

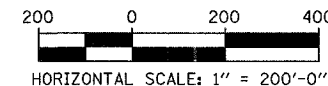


Prop. Curve NB5704	Prop. Curve SB5700
P.I. STA = 235+20.23	P.I. STA = 133+70.06
N = 1,839,407.65	N = 1,839,521.70
E = 1,177,015.14	E = 1,177,054.03
$\Delta = 56^\circ 09' 47.10''$ (LT)	$\Delta = 66^\circ 11' 55.15''$ (LT)
D = 2° 57' 23.18"	D = 3° 02' 10.83"
R = 1,938.00	R = 1,887.00
L = 1,899.69	L = 2,180.21
E = 258.59	E = 365.53
T = 1,033.99	T = 1,230.09
P.C. STA = 224+86.23	P.C. STA = 121+39.97
N = 1,839,382.09	N = 1,839,491.52
E = 1,175,981.46	E = 1,175,824.31
P.T. STA = 243+85.92	P.T. STA = 143+20.18
N = 1,840,280.48	N = 1,840,659.02
E = 1,177,569.49	E = 1,177,522.68

Prop. Curve WBC.4	Prop. Curve WBC.2A	Prop. Curve WBC.2B	Prop. Curve WBC.2C
P.I. STA = 314+97.99	P.I. STA = 327+01.39	P.I. STA = 332+91.75	P.I. STA = 337+82.29
N = 1,838,886.65	N = 1,839,771.93	N = 1,839,917.38	N = 1,839,877.37
E = 1,179,076.78	E = 1,178,146.85	E = 1,177,556.95	E = 1,177,064.10
$\Delta = 47^\circ 12' 48.53''$ (RT)	$\Delta = 29^\circ 44' 20.76''$ (LT)	$\Delta = 18^\circ 29' 34.12''$ (LT)	$\Delta = 19^\circ 30' 39.60''$ (LT)
D = 3° 33' 31.48"	D = 3° 59' 23.84"	D = 4° 07' 19.19"	D = 3° 40' 23.35"
R = 1,610.00	R = 1,436.00	R = 1,390.00	R = 1,559.85
L = 1,326.69	L = 745.35	L = 448.64	L = 531.18
E = 147.04	E = 49.75	E = 22.89	E = 22.89
T = 703.62	T = 381.27	T = 226.29	T = 268.19
P.C. STA = 307+94.38	P.C. STA = 323+20.11	P.C. STA = 330+65.46	P.C. STA = 335+14.10
N = 1,838,931.11	N = 1,839,509.04	N = 1,839,863.21	N = 1,839,899.07
E = 1,179,778.99	E = 1,178,423.00	E = 1,177,776.66	E = 1,177,331.41
P.T. STA = 321+21.07	P.T. STA = 330+65.46	P.T. STA = 335+14.10	P.T. STA = 340+45.28
N = 1,839,371.80	N = 1,839,863.21	N = 1,839,899.07	N = 1,839,767.64
E = 1,178,567.16	E = 1,177,776.66	E = 1,177,331.41	E = 1,176,819.39

Prop. Curve EBXCON01	Prop. Curve EBXCON02	Prop. Curve EBXCON04	Prop. Curve EBXCON05
P.I. STA = 403+20.79	P.I. STA = 412+04.19	P.I. STA = 418+70.80	P.I. STA = 427+34.61
N = 1,839,382.96	N = 1,839,651.23	N = 1,839,619.04	N = 1,839,138.24
E = 1,176,276.26	E = 1,177,794.53	E = 1,177,794.53	E = 1,178,533.79
$\Delta = 17^\circ 18' 55.71''$ (LT)	$\Delta = 20^\circ 19' 46.56''$ (RT)	$\Delta = 30^\circ 17' 44.12''$ (RT)	$\Delta = 5^\circ 38' 50.84''$ (LT)
D = 2° 57' 50.71"	D = 3° 34' 51.55"	D = 4° 01' 14.72"	D = 2° 33' 52.98"
R = 1,933.00	R = 1,600.00	R = 1,425.00	R = 2,234.00
L = 584.18	L = 567.71	L = 753.48	L = 220.20
E = 22.28	E = 25.51	E = 51.29	E = 2.72
T = 294.33	T = 286.87	T = 385.77	T = 110.19
P.C. STA = 400+26.45	P.C. STA = 409+17.32	P.C. STA = 414+85.03	P.C. STA = 426+24.42
N = 1,839,381.57	N = 1,839,564.56	N = 1,839,637.50	N = 1,839,198.31
E = 1,175,981.93	E = 1,176,849.19	E = 1,177,409.20	E = 1,178,441.42
P.T. STA = 406+10.63	P.T. STA = 414+85.03	P.T. STA = 422+38.51	P.T. STA = 428+44.62
N = 1,839,471.89	N = 1,839,637.50	N = 1,839,408.71	N = 1,839,087.55
E = 1,176,556.83	E = 1,177,409.20	E = 1,178,117.92	E = 1,178,631.63

TYLIN INTERNATIONAL



REVISIONS	
NAME	DATE

ILLINOIS DEPARTMENT OF TRANSPORTATION
F.A.I. 90/94 (DAN RYAN EXPRESSWAY)
31st STREET TO I-57

ALIGNMENT
SHEET 1 OF 3

SCALE: 1"=200'-0"
DATE: OCTOBER 29, 2004
DRAWN BY: JPM
CHECKED BY: DAK