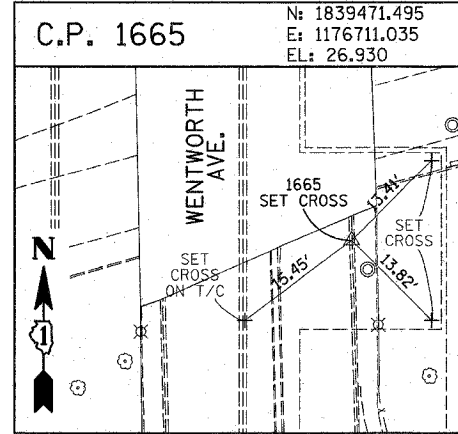
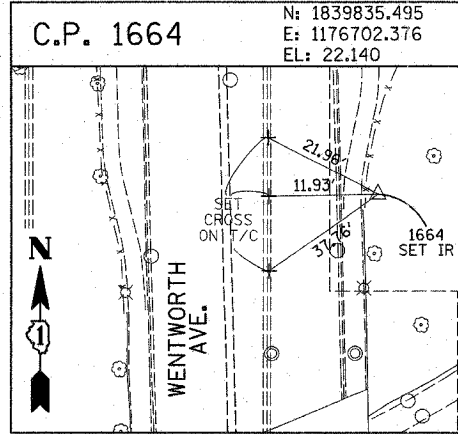
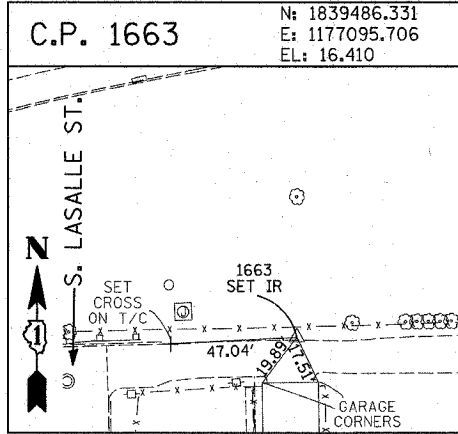
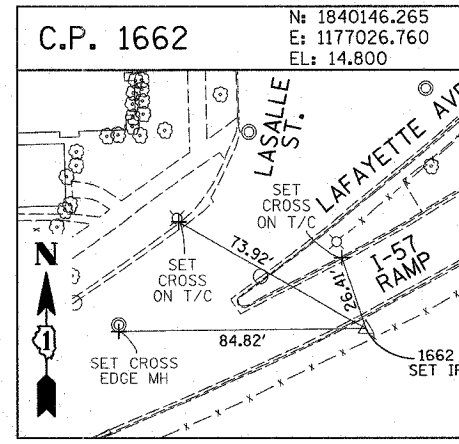
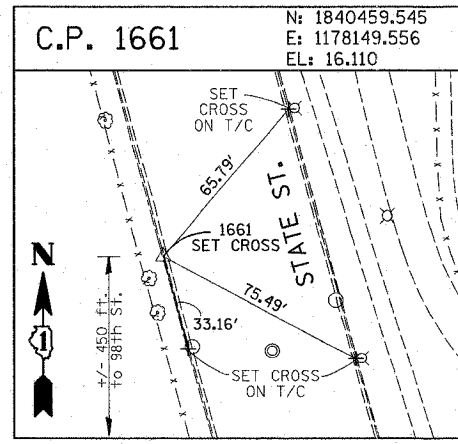
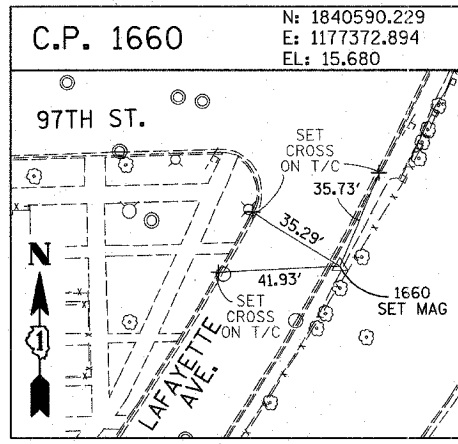
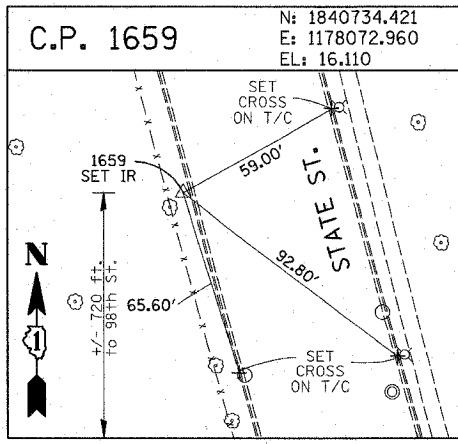
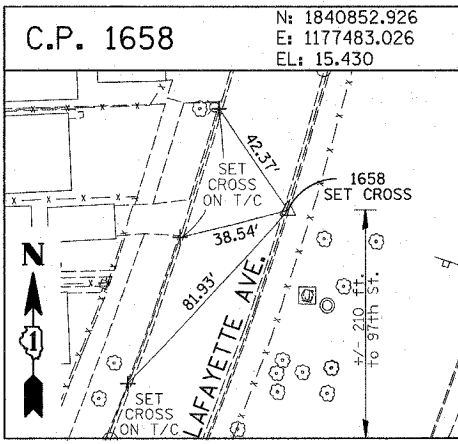
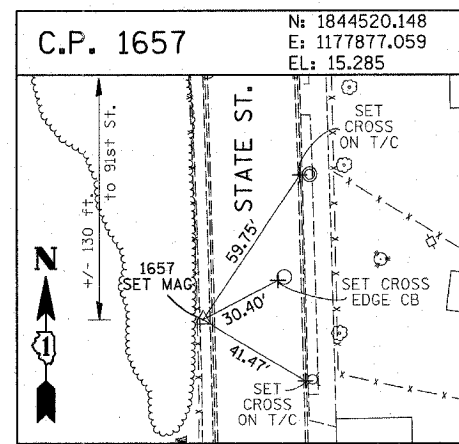
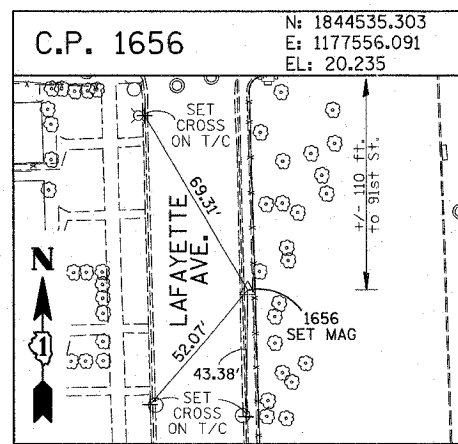
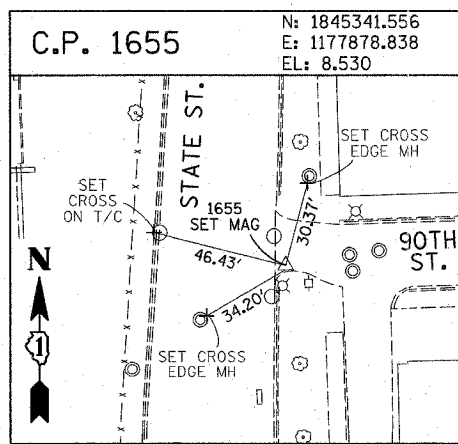
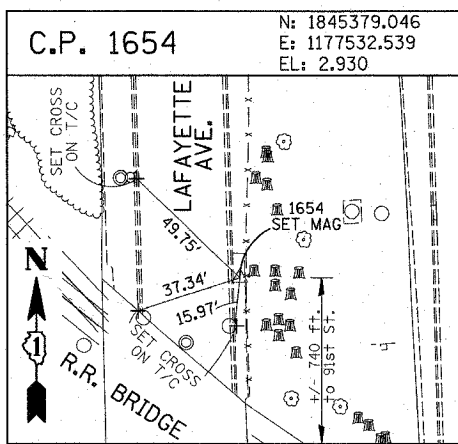
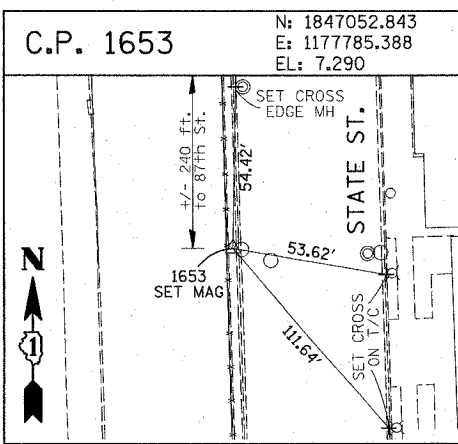
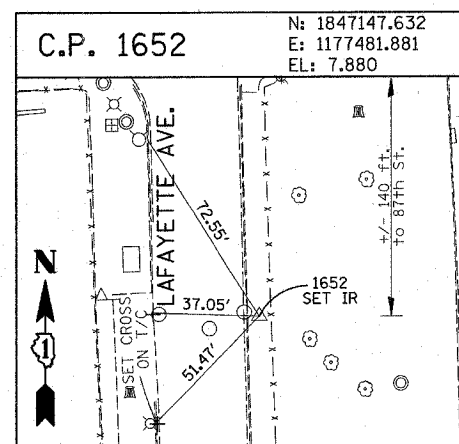
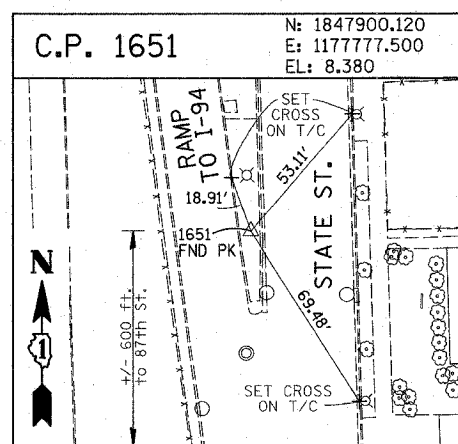
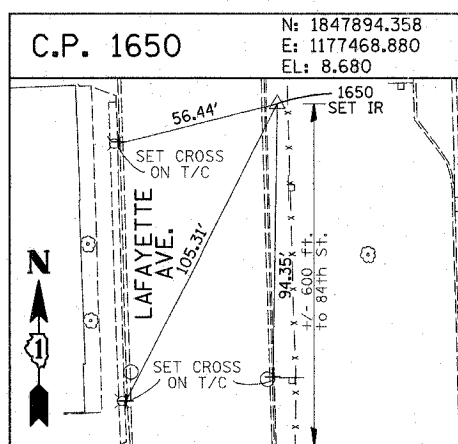
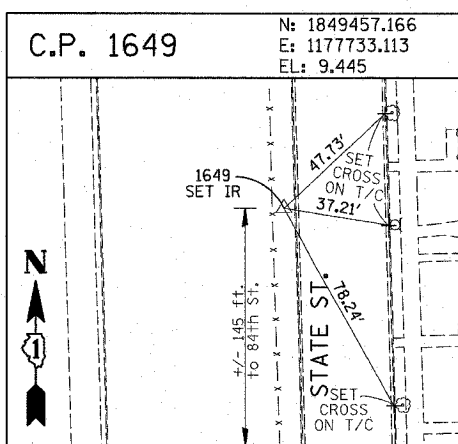
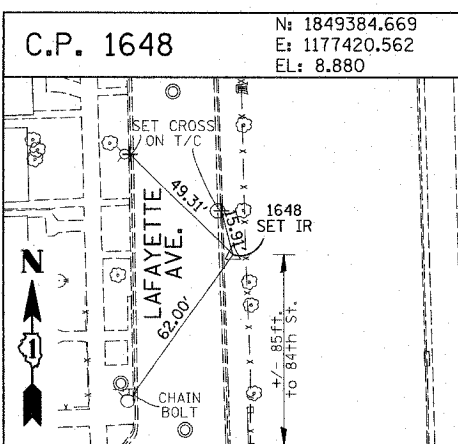


F.A.I. RTE.	SECTION	COUNTY	TOTAL SHEETS	SHEET NO.
90/94	2003-0311	COOK	976	17
STA.	TO STA.			
FED. ROAD DIST. NO.	ILLINOIS FED. AID PROJECT			

62583



American Surveying Consultants, P.C.
 1177-1100

REVISIONS	
NAME	DATE

ILLINOIS DEPARTMENT OF TRANSPORTATION
 F.A.I. 90/94 (DAN RYAN EXPRESSWAY)
 31st STREET TO I-57
 SURVEY TIES FOR CONTROL POINTS
 SHEET 3 OF 4
 SCALE: 1"=30'
 DATE: OCTOBER 29, 2004
 DRAWN BY: GSP
 CHECKED BY: MMW

10/15/2004 01:54:06 PM