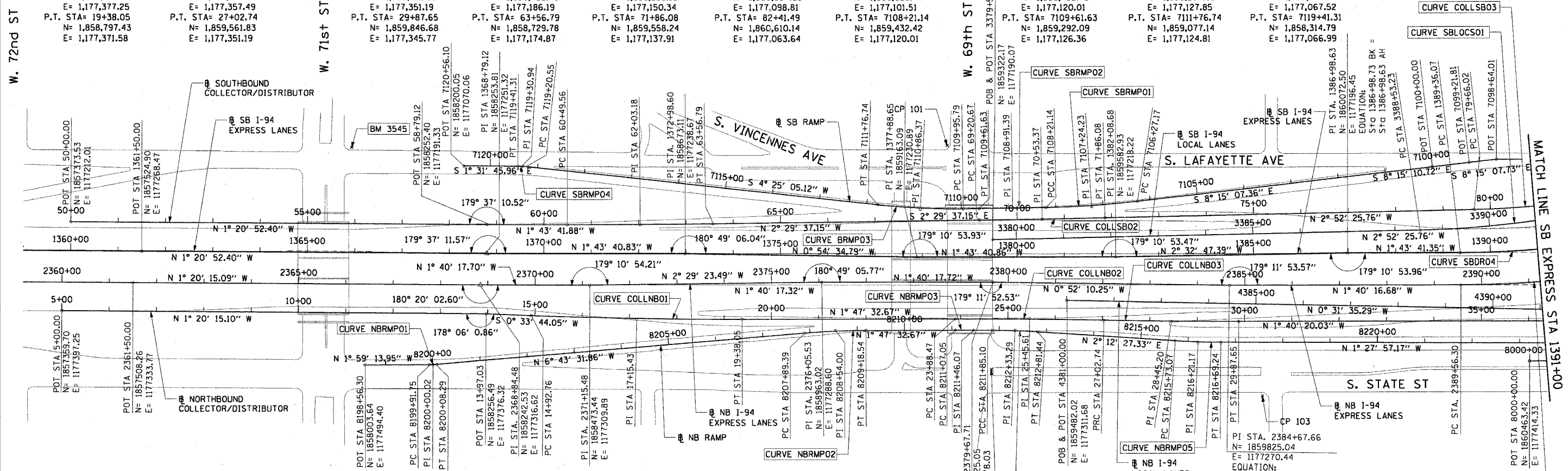


F.A.I. RTE.	SECTION	COUNTY	TOTAL SHEETS	SHEET NO.
90/94	2003-0311	COOK	976	19
STA. TO STA.		FED. ROAD DIST. NO. 1 ILLINOIS FED. AID PROJECT		

CURVE COLLNBO1	CURVE COLLNBO2	CURVE COLLNBO3	CURVE COLLSBO1	CURVE COLLSBO2	CURVE COLLSBO3	CURVE SBRMPO1	CURVE SBRMPO2	CURVE SBRMPO3	CURVE SBRMPO4
P.I. STA= 17+15.43 N= 1,858,574.87 E= 1,177,378.55 Δ= 2° 07' 33" D= 0° 28' 38" R= 12,000.00' T= 222.67' L= 445.29 E= 2.06' e= N/A T.R.= N/A S.E. RUN= N/A P.C. STA= 14+92.76 N= 1,858,352.21 E= 1,177,377.25 P.T. STA= 19+38.05 N= 1,858,797.43 E= 1,177,371.58	P.I. STA= 25+45.61 N= 1,859,404.70 E= 1,177,352.58 Δ= 1° 17' 10" D= 0° 24' 33" R= 14,000.00' T= 157.14' L= 314.27 E= 0.88' e= N/A T.R.= N/A S.E. RUN= N/A P.C. STA= 23+88.47 N= 1,859,247.63 E= 1,177,357.49 P.T. STA= 27+02.74 N= 1,859,561.83 E= 1,177,351.19	P.I. STA= 28+45.20 N= 1,859,704.28 E= 1,177,349.93 Δ= 1° 09' 57" D= 0° 24' 33" R= 14,000.00' T= 142.45' L= 284.90 E= 0.72' e= N/A T.R.= N/A S.E. RUN= N/A P.C. STA= 27+02.74 N= 1,859,561.83 E= 1,177,351.19 P.T. STA= 29+87.65 N= 1,859,846.68 E= 1,177,345.77	P.I. STA= 62+03.18 N= 1,858,576.31 E= 1,177,181.55 Δ= 0° 45' 55" D= 0° 14' 56" R= 23,000.00' T= 153.61' L= 307.23 E= 0.51' e= N/A T.R.= N/A S.E. RUN= N/A P.C. STA= 60+49.56 N= 1,858,422.76 E= 1,177,186.19 P.T. STA= 63+56.79 N= 1,858,729.78 E= 1,177,174.87	P.I. STA= 70+53.37 N= 1,859,425.70 E= 1,177,144.56 Δ= 0° 22' 48" D= 0° 14' 56" R= 20,000.00' T= 132.70' L= 265.40 E= 0.22' e= N/A T.R.= N/A S.E. RUN= N/A P.C. STA= 69+20.67 N= 1,859,293.13 E= 1,177,150.34 P.T. STA= 71+86.08 N= 1,859,558.24 E= 1,177,137.91	P.I. STA= 81+04.03 N= 1,860,475.04 E= 1,177,091.89 Δ= 8° 56' 14" D= 0° 14' 56" R= 1,766.00' T= 138.01' L= 275.46 E= 5.38' e= N/A T.R.= N/A S.E. RUN= N/A P.C. STA= 79+66.02 N= 1,860,337.20 E= 1,177,098.81 P.T. STA= 82+41.49 N= 1,860,610.14 E= 1,177,063.64	P.I. STA= 7107+24.23 N= 1,859,529.38 E= 1,177,115.44 Δ= 5° 33' 25" D= 2° 51' 53" R= 2,000.00' T= 97.06' L= 193.98 E= 2.35' e= N/A T.R.= N/A S.E. RUN= N/A P.C. STA= 7106+27.17 N= 1,859,625.44 E= 1,177,101.51 P.T. STA= 7108+21.14 N= 1,859,432.42 E= 1,177,120.01	P.I. STA= 7108+91.39 N= 1,859,362.26 E= 1,177,123.31 Δ= 0° 12' 05" D= 0° 08' 36" R= 39,975.44' T= 70.24' L= 140.48 E= 0.06' e= N/A T.R.= N/A S.E. RUN= N/A P.C. STA= 7108+21.14 N= 1,859,432.42 E= 1,177,120.01 P.T. STA= 7109+61.63 N= 1,859,292.09 E= 1,177,126.36	P.I. STA= 7110+86.37 N= 1,859,167.46 E= 1,177,131.79 Δ= 6° 54' 42" D= 3° 49' 11" R= 200.00' T= 90.58' L= 180.95 E= 2.73' e= N/A T.R.= N/A S.E. RUN= N/A P.C. STA= 7109+95.79 N= 1,859,257.95 E= 1,177,127.85 P.T. STA= 7111+76.74 N= 1,859,077.14 E= 1,177,124.81	P.I. STA= 7119+30.94 N= 1,858,325.18 E= 1,177,066.71 Δ= 5° 56' 51" D= 28° 38' 52" R= 200.00' T= 10.39' L= 20.76 E= 0.27' e= N/A T.R.= N/A S.E. RUN= N/A P.C. STA= 7119+20.55 N= 1,858,335.54 E= 1,177,067.52 P.T. STA= 7119+41.31 N= 1,858,314.79 E= 1,177,066.99



BENCH MARK NO. 3528 ELEV. 16.20	BENCH MARK NO. 3535 ELEV. 19.31
DESCRIPTION: CROSS CUT ON NORTHWESTERLY BOLT OF FIRE HYDRANT AT THE NORTHWEST CORNER OF 45TH ST AND WENTWORTH AVE	DESCRIPTION: FOUND CROSS CUT ON SOUTHERLY FLANGE BOLT OF FIRE HYDRANT AT THE NORTHEAST CORNER OF 59TH ST AND WENTWORTH AVE
BENCH MARK NO. 3530 ELEV. 18.18	BENCH MARK NO. 3536 ELEV. 18.37
DESCRIPTION: CROSS CUT ON SOUTHEAST BOLT OF LIGHT POLE BASE AT THE NORTHWEST CORNER OF 51ST ST AND WELLS ST	DESCRIPTION: CROSS CUT ON SOUTHEASTERLY FLANGE BOLT OF FIRE HYDRANT AT THE SOUTHEAST CORNER OF GARFIELD BLVD AND WENTWORTH AVE
BENCH MARK NO. 3531 ELEV. 17.55	BENCH MARK NO. 3537 ELEV. 17.71
DESCRIPTION: CROSS CUT ON NORTHEASTERLY FLANGE BOLT OF FIRE HYDRANT AT THE NORTHEAST CORNER OF GARFIELD BLVD AND WELLS ST	DESCRIPTION: CROSS CUT ON NORTHEASTERLY FLANGE BOLT OF FIRE HYDRANT AT THE NORTHEAST CORNER OF 51ST ST AND WENTWORTH AVE
BENCH MARK NO. 3532 ELEV. 18.84	BENCH MARK NO. 3538 ELEV. 17.31
DESCRIPTION: HORIZONTAL BOLT ON CTA "EL" STRUCTURE, EAST SIDE OF WELLS ST ABOUT 50 FEET NORTH OF 59TH PL.	DESCRIPTION: CROSS CUT ON EASTERLY FLANGE BOLT OF FIRE HYDRANT AT THE NORTHEAST CORNER OF 47TH ST AND LASALLE ST
BENCH MARK NO. 3533 ELEV. 19.71	BENCH MARK NO. 3544 ELEV. 19.38
DESCRIPTION: BRASS DISK (CTA MONUMENT) AT THE SOUTHWEST CORNER OF 63RD ST AND HARVARD ST	DESCRIPTION: CROSS CUT ON WESTERLY FLANGE BOLT OF FIRE HYDRANT AT THE NORTHWEST CORNER OF 67TH ST AND LAFAYETTE AVE
	BENCH MARK NO. 3545 ELEV. 10.53
	DESCRIPTION: CROSS CUT ON NORTHWEST BOLT OF LIGHT POLE BASE AT THE NORTHWEST CORNER OF 71ST ST AND LAFAYETTE AVE

CURVE NBRMPO1 P.I. STA= 8200+00.02 N= 1,858,147.27 E= 1,177,489.42 Δ= 4° 44' 18" D= 28° 38' 52" R= 200.00' T= 8.27' L= 16.54 E= 0.17' e= N/A T.R.= N/A S.E. RUN= N/A P.C. STA= 8199+91.75 N= 1,858,139.01 E= 1,177,489.70 P.T. STA= 8200+08.29 N= 1,858,155.49 E= 1,177,488.45	CURVE NBRMPO2 P.I. STA= 8208+54.00 N= 1,858,995.39 E= 1,177,389.40 Δ= 4° 55' 59" D= 3° 49' 11" R= 1,500.00' T= 64.61' L= 129.15 E= 1.39' e= N/A T.R.= N/A S.E. RUN= N/A P.C. STA= 8207+89.39 N= 1,858,931.22 E= 1,177,396.97 P.T. STA= 8209+18.54 N= 1,859,059.97 E= 1,177,387.38	CURVE NBRMPO3 P.I. STA= 8211+46.07 N= 1,859,287.39 E= 1,177,380.27 Δ= 0° 19' 12" D= 0° 24' 36" R= 13,976.00' T= 78.05 L= 78.05 E= 0.05' e= N/A T.R.= N/A S.E. RUN= N/A P.C. STA= 8211+07.05 N= 1,859,248.39 E= 1,177,381.49 P.T. STA= 8211+85.10 N= 1,859,326.41 E= 1,177,379.26	CURVE NBRMPO4 P.I. STA= 8212+33.29 N= 1,859,374.58 E= 1,177,378.02 Δ= 3° 40' 48" D= 3° 49' 11" R= 1,500.00' T= 39.03' L= 96.34 E= 0.77' e= N/A T.R.= N/A S.E. RUN= N/A P.C. STA= 8211+85.10 N= 1,859,326.41 E= 1,177,379.26 P.T. STA= 8212+81.44 N= 1,859,422.73 E= 1,177,379.88
---	--	---	---

CURVE NBRMPO5 P.I. STA= 8216+21.17 N= 1,859,762.21 E= 1,177,392.97 Δ= 3° 40' 25" D= 3° 49' 11" R= 1,500.00' T= 48.10' L= 96.17' E= 0.77' e= N/A T.R.= N/A S.E. RUN= N/A P.C. STA= 8215+73.07 N= 1,859,714.14 E= 1,177,391.11 P.T. STA= 8216+69.24 N= 1,859,810.29 E= 1,177,391.74	CURVE SBLOCSO1 P.I. STA= 3391+35.61 N= 1,860,506.29 E= 1,177,130.62 Δ= 15° 38' 54" D= 2° 47' 17" R= 2,055.00' T= 282.39' L= 561.26' E= 19.31' e= 5.52' T.R.= 41' S.E. RUN= 196' P.C. STA= 3388+53.23 N= 1,860,224.26 E= 1,177,144.78 P.T. STA= 3394+14.48 N= 1,860,774.05 E= 1,177,040.92
--	--

NOTES:
1. AVERAGE GRID TO GROUND CONVERSION FACTOR = 1.000010988654360

REVISIONS	
NAME	DATE

ILLINOIS DEPARTMENT OF TRANSPORTATION
F.A.I. 90/94 (DAN RYAN EXPRESSWAY)
31st STREET TO I-57
ALIGNMENT PLAN

SCALE: 1"=100'
DATE: October 29, 2004
DRAWN BY: NJH/AMM
CHECKED BY: JAL/MS

