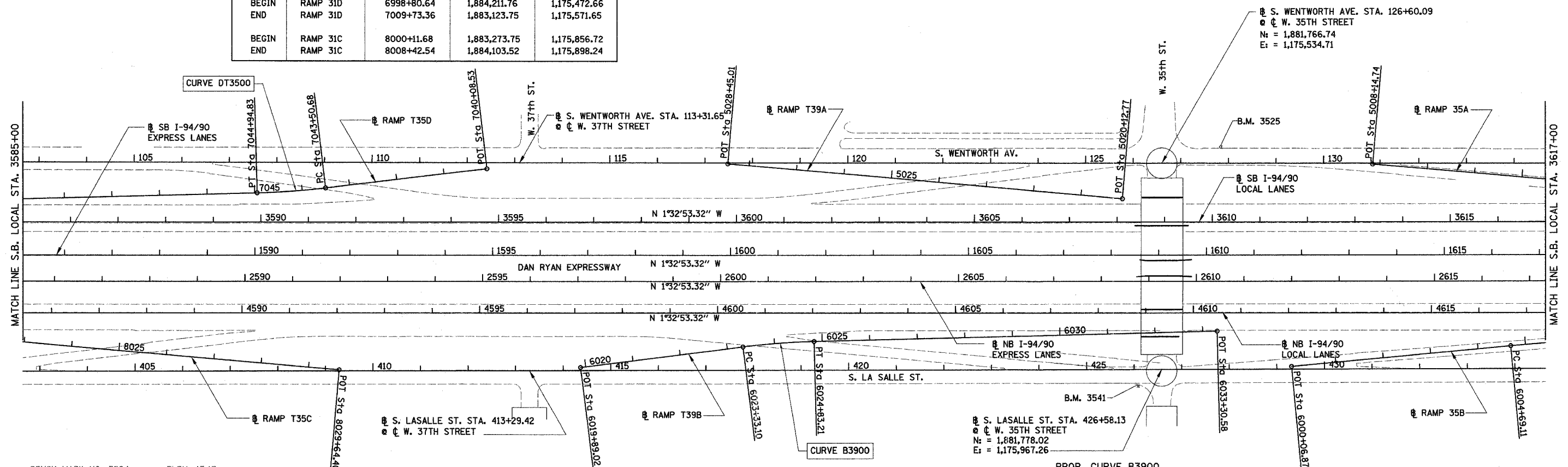


62583	F.A. RTE. 90/94	SECTION 2003-0311	COUNTY COOK	TOTAL SHEETS 976	SHEET NO. 32
STA. 3585+00.00		TO STA. 3617+00.00			
FED. ROAD DIST. NO.		ILLINOIS		FED. AID PROJECT	

PROP. CURVE DT3500
 PI STA. = 7044+22.81
 Nt = 1,879,939.16
 Et = 1,175,643.87
 $\Delta = 5^\circ 14' 38''$ (RT)
 D = $3^\circ 38' 16''$
 R = 1,575.00'
 T = 72.13'
 L = 144.15'
 E = 1.65'
 S.E. = 0.036 FT/FT
 S.A. = 7043+14.68 TO 7043+59.68
 S.R. = 7044+85.83 TO 7045+30.83
 P.C. STA = 7043+50.68
 Nt = 1,880,010.54
 Et = 1,175,633.56
 P.T. STA = 7044+94.83
 Nt = 1,879,867.13
 Et = 1,175,647.62

POINT	DESCRIPTION	STATION	NORTH	EAST
BEGIN	RAMP T35D	7040+08.53	1,880,349.18	1,175,584.62
END	RAMP T35D	7053+38.03	1,879,025.07	1,175,691.43
BEGIN	RAMP T35C	8020+34.46	1,879,121.15	1,175,958.93
END	RAMP T35C	8029+64.40	1,880,049.40	1,176,014.92
BEGIN	RAMP T39A	5020+12.77	1,881,685.70	1,175,610.45
END	RAMP T39A	5028+45.02	1,880,854.96	1,175,560.34
BEGIN	RAMP T39B	6019+89.02	1,880,556.70	1,175,995.95
END	RAMP T39B	6033+30.58	1,881,892.23	1,175,884.04
BEGIN	RAMP 35A	5000+11.94	1,883,011.02	1,175,573.65
END	RAMP 35A	5008+14.74	1,882,209.69	1,175,525.14
BEGIN	RAMP 35B	6000+06.87	1,882,050.72	1,175,953.56
END	RAMP 35B	6009+98.58	1,883,037.81	1,175,862.08
BEGIN	RAMP 31D	6998+80.64	1,884,211.76	1,175,472.66
END	RAMP 31D	7009+73.36	1,883,123.75	1,175,571.65
BEGIN	RAMP 31C	8000+11.68	1,883,273.75	1,175,856.72
END	RAMP 31C	8008+42.54	1,884,103.52	1,175,898.24



BENCH MARK NO. 3524 ELEV. 15.17
 DESCRIPTION:
 CROSS CUT ON NORTH FLANGE BOLT OF FIRE HYDRANT AT THE NORTHWEST CORNER OF 31st ST. AND WENTWORTH AVE.

BENCH MARK NO. 3525 ELEV. 16.33
 DESCRIPTION:
 CROSS CUT ON NORTHWEST FLANGE BOLT OF FIRE HYDRANT AT THE NORTHWEST CORNER OF 35th ST. AND WENTWORTH AVE.

BENCH MARK NO. 3526 ELEV. 17.37
 DESCRIPTION:
 CROSS CUT ON NORTHWEST FLANGE BOLT OF FIRE HYDRANT AT THE WENTWORTH GARDEN OFFICE ALONG THE WEST SIDE OF WENTWORTH AVE.

BENCH MARK NO. 3527 ELEV. 15.63
 DESCRIPTION:
 CROSS CUT ON NORTHERLY FLANGE BOLT OF FIRE HYDRANT AT THE NORTHWEST CORNER OF ROOT ST. AND WENTWORTH AVE.

BENCH MARK NO. 3539 ELEV. 13.10
 DESCRIPTION:
 CROSS CUT ON EASTERLY BOLT OF LIGHT POLE BASE AT THE SOUTHEAST CORNER OF 43rd ST. AND LA SALLE ST.

BENCH MARK NO. 3540 ELEV. 12.33
 DESCRIPTION:
 SQUARE CUT ON THE SOUTHWEST CORNER OF THE TRAFFIC CONTROL BOX AT THE NORTHEAST CORNER OF 39th ST. AND LA SALLE ST.

BENCH MARK NO. 3541 ELEV. 14.78
 DESCRIPTION:
 CROSS CUT ON THE SOUTHWEST BOLT OF LIGHT POLE BASE AT THE SOUTH EAST CORNER OF 35th ST. AND LA SALLE ST.

BENCH MARK NO. 3542 ELEV. 13.57
 DESCRIPTION:
 SQUARE CUT ON THE EASTERLY FLANGE BOLT OF THE FIRE HYDRANT AT THE INTERSECTION OF 31st ST. AND LA SALLE ST.

PROP. CURVE B3900
 PI STA. = 6024+08.22
 Nt = 1,880,970.99
 Et = 1,175,931.99
 $\Delta = 5^\circ 47' 44''$ (RT)
 D = $3^\circ 51' 39''$
 R = 1,484.00'
 T = 75.12'
 L = 150.11'
 E = 1.90'
 S.E. = 0.037 FT/FT
 S.A. = 6022+97.10 TO 6023+42.11
 S.R. = 6024+74.21 TO 6025+19.21
 P.C. STA = 6023+33.10
 Nt = 1,880,896.76
 Et = 1,175,943.46
 P.T. STA = 6024+83.21
 Nt = 1,881,046.00
 Et = 1,175,928.09

REVISIONS	
NAME	DATE

ILLINOIS DEPARTMENT OF TRANSPORTATION
 F.A.I. 90/94 (DAN RYAN EXPRESSWAY)
 31st STREET TO I-57
 ROADWAY LIGHTING PLANS
 ALIGNMENT AND TIES SHEET

SCALE: 1"=100'
 DATE: OCTOBER 15, 2004

DRAWN BY: RA
 CHECKED BY: JDC