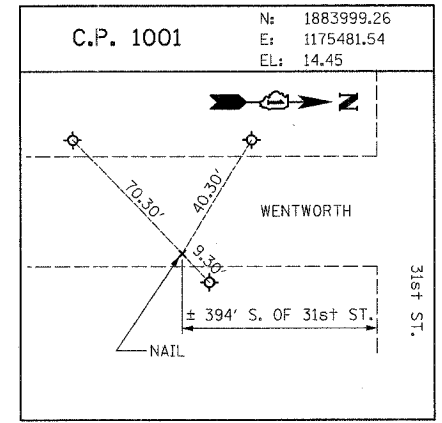
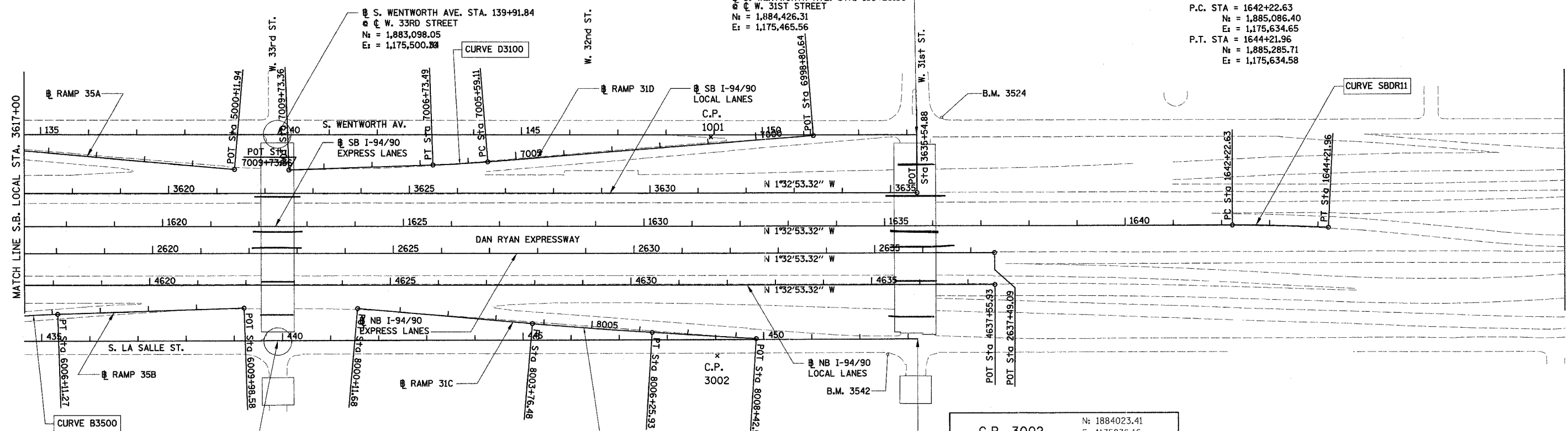


62583	F.A. RTE.	SECTION	COUNTY	TOTAL SHEETS	SHEET NO.
90/94	2003-0311	COOK	976	33	
STA. 3617+00.00		TO STA.			
FED. ROAD DIST. NO.	ILLINOIS	FED. AID PROJECT			

PROP. CURVE D3100
 PI STA. = 7006+16.31
 N_i = 1,883,480.18
 E_i = 1,175,550.12
 Δ = 2° 35' 11" (RT)
 D = 2° 15' 40"
 R = 2,534.00'
 T = 57.20'
 L = 114.38'
 E = 0.65'
 S.E. = 0.026 FT/FT
 S.A. = 7005+43.11 TO 7005+63.11
 S.R. = 7006+69.49 TO 7006+89.49
 P.C. STA = 7005+59.11
 N_i = 1,883,537.06
 E_i = 1,175,544.09
 P.T. STA = 7006+73.49
 N_f = 1,883,423.08
 E_f = 1,175,553.57



PROP. CURVE SBDR11
 PI STA. = 1643+22.32
 N_i = 1,885,186.06
 E_i = 1,175,631.95
 Δ = 3° 03' 18" (RT)
 D = 1° 31' 57"
 R = 3,738.57'
 T = 99.69'
 L = 199.34'
 E = 1.33'
 P.C. STA = 1642+22.63
 N_i = 1,885,086.40
 E_i = 1,175,634.65
 P.T. STA = 1644+21.96
 N_f = 1,885,285.71
 E_f = 1,175,634.58

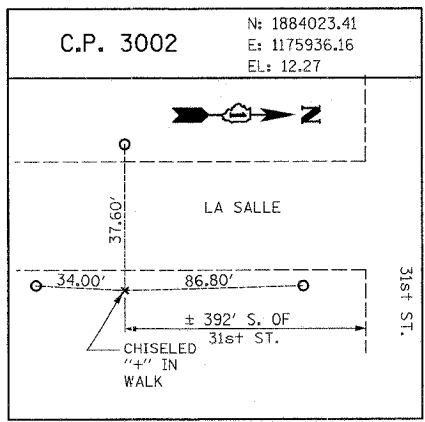


PROP. CURVE B3500
 PI STA. = 6005+40.21
 N_i = 1,882,580.23
 E_i = 1,175,889.72
 Δ = 3° 25' 00" (RT)
 D = 2° 24' 12"
 R = 2,384.00'
 T = 71.10'
 L = 142.16'
 E = 1.06'
 S.E. = 0.027 FT/FT
 S.A. = 6004+53.11 TO 6004+73.11
 S.R. = 6006+07.27 TO 6006+27.27
 P.C. STA = 6004+69.11
 N_i = 1,882,509.64
 E_i = 1,175,898.23
 P.T. STA = 6006+11.27
 N_f = 1,882,651.20
 E_f = 1,175,885.43

PROP. CURVE C3100
 PI STA. = 8005+01.21
 N_i = 1,883,762.40
 E_i = 1,175,886.19
 Δ = 1° 25' 45" (LT)
 D = 0° 34' 23"
 R = 10,000.00'
 T = 124.73'
 L = 249.44'
 E = 0.78'
 S.E. = 0.010 FT/FT
 S.A. = 8004+10.21 TO 8004+38.21
 S.R. = 8005+64.20 TO 8005+92.20
 P.C. STA = 8003+76.48
 N_i = 1,883,637.89
 E_i = 1,175,878.68
 P.T. STA = 8006+25.93
 N_f = 1,883,887.05
 E_f = 1,175,890.60

PROP. CURVE C3100
 PI STA. = 8005+01.21
 N_i = 1,883,762.40
 E_i = 1,175,886.19
 Δ = 1° 25' 45" (LT)
 D = 0° 34' 23"
 R = 10,000.00'
 T = 124.73'
 L = 249.44'
 E = 0.78'
 S.E. = 0.010 FT/FT
 S.A. = 8004+10.21 TO 8004+38.21
 S.R. = 8005+64.20 TO 8005+92.20
 P.C. STA = 8003+76.48
 N_i = 1,883,637.89
 E_i = 1,175,878.68
 P.T. STA = 8006+25.93
 N_f = 1,883,887.05
 E_f = 1,175,890.60

PROP. CURVE C3100
 PI STA. = 8005+01.21
 N_i = 1,883,762.40
 E_i = 1,175,886.19
 Δ = 1° 25' 45" (LT)
 D = 0° 34' 23"
 R = 10,000.00'
 T = 124.73'
 L = 249.44'
 E = 0.78'
 S.E. = 0.010 FT/FT
 S.A. = 8004+10.21 TO 8004+38.21
 S.R. = 8005+64.20 TO 8005+92.20
 P.C. STA = 8003+76.48
 N_i = 1,883,637.89
 E_i = 1,175,878.68
 P.T. STA = 8006+25.93
 N_f = 1,883,887.05
 E_f = 1,175,890.60



REVISIONS	
NAME	DATE

ILLINOIS DEPARTMENT OF TRANSPORTATION
 F.A.I. 90/94 (DAN RYAN EXPRESSWAY)
 31st STREET TO I-57
 ROADWAY LIGHTING PLANS
 ALIGNMENT AND TIES SHEET
 SCALE: 1"=100'
 DATE: OCTOBER 15, 2004
 DRAWN BY: RA
 CHECKED BY: JDC

BOWMAN, BARRETT & ASSOCIATES INC.
 CONSULTING ENGINEERS
 134 EAST RANDOLPH STREET SUITE 2400 CHICAGO, ILLINOIS 60601
 JOB NO. ...