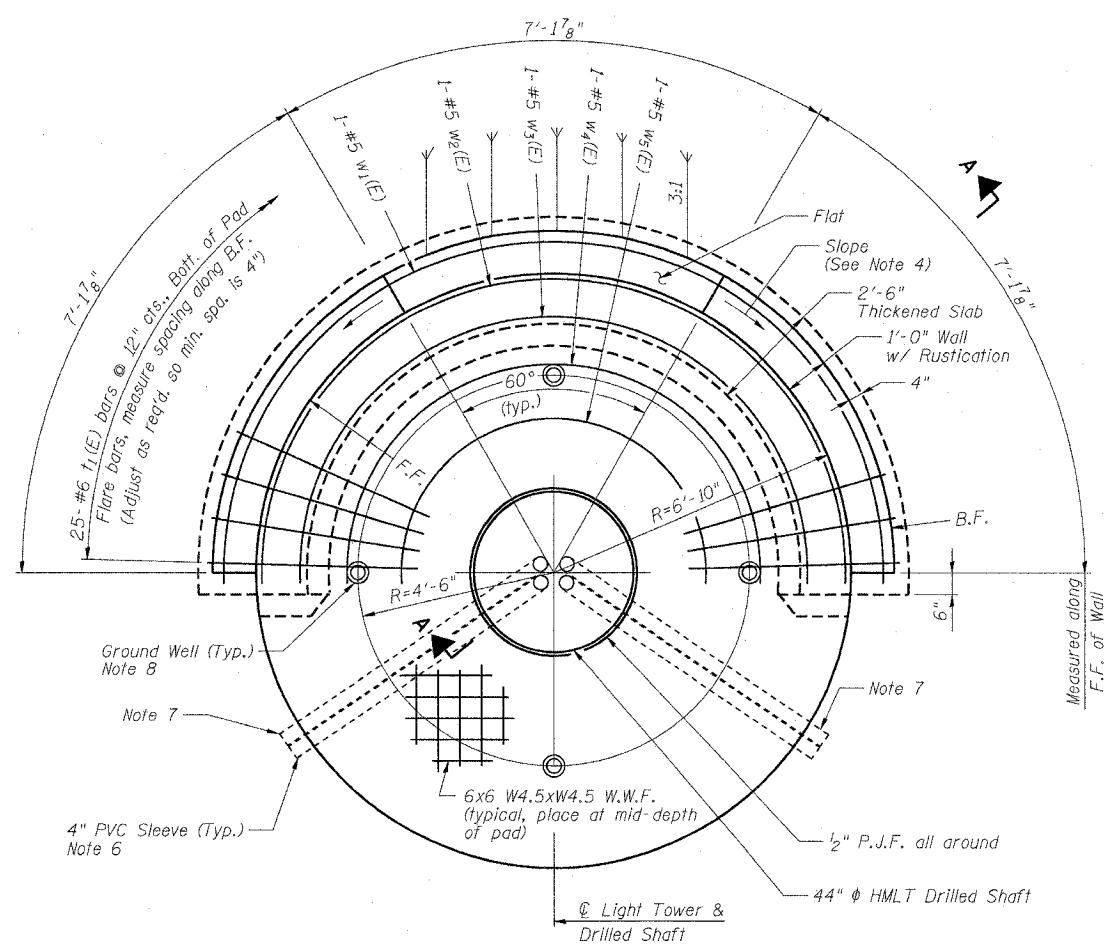


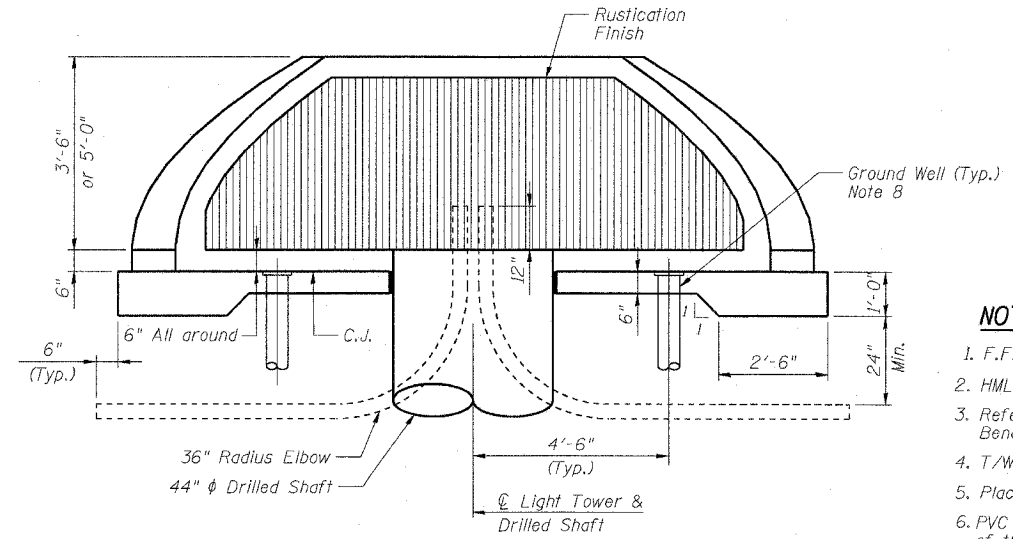
F.A.I. RTE.	SECTION	COUNTY	TOTAL SHEETS	SHEET NO.
90/94	2003-0311	COOK	976	54
STA.	TO STA.			
FED. ROAD DIST. NO. 1 ILLINOIS FED. AID PROJECT				

62583

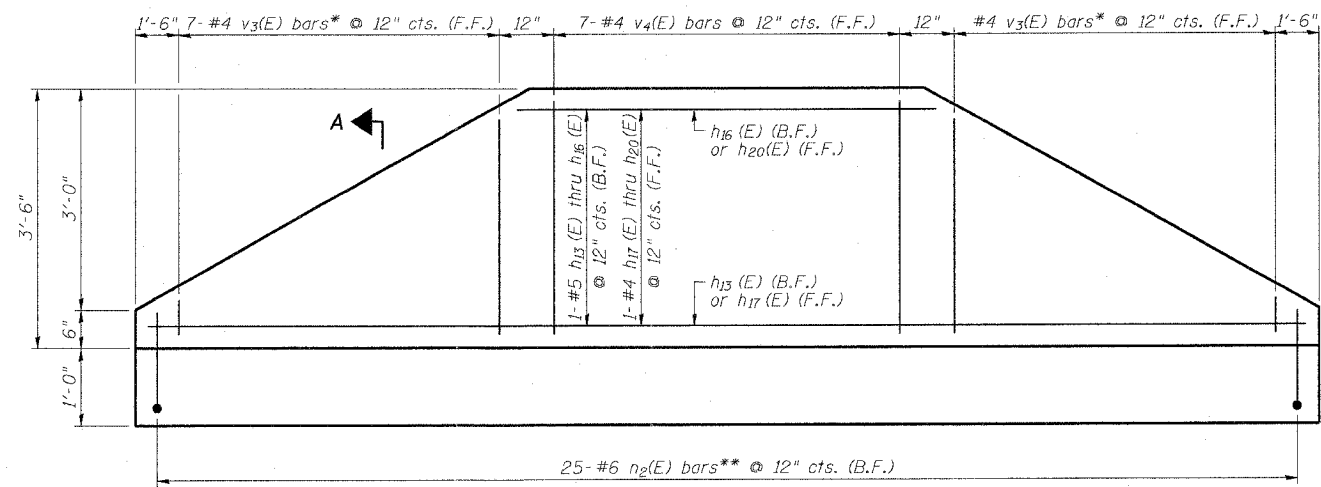


**PLAN VIEW**

Place Bars  $w_1(E)$  thru  $w_5(E)$  @ 12" cts., Bott. of Pad

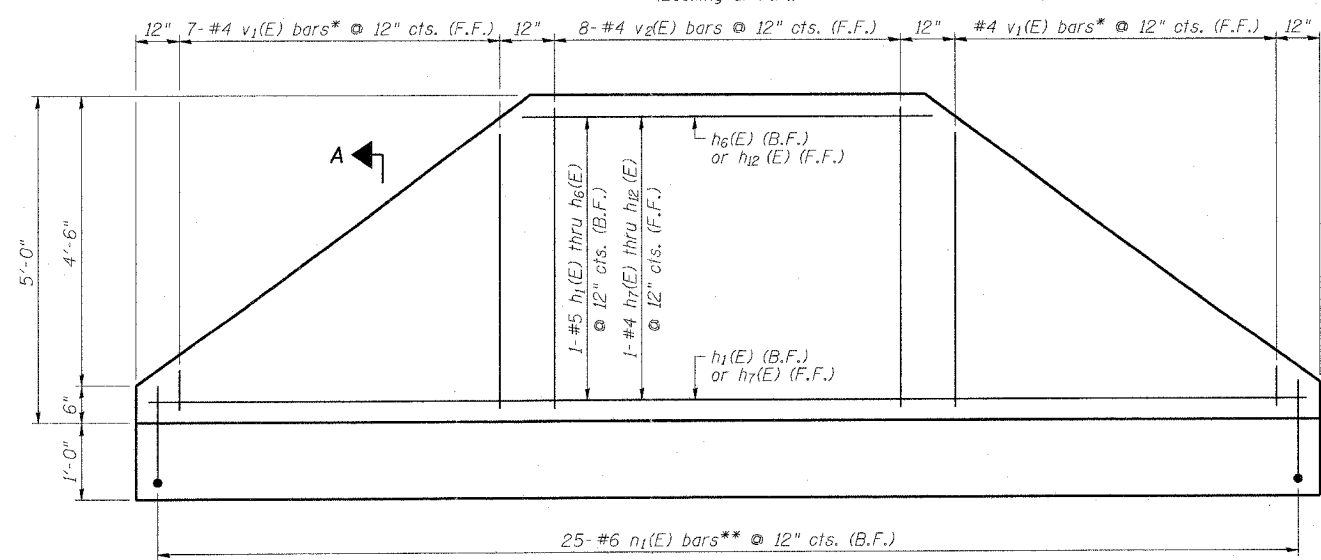


**ELEVATION VIEW**  
(HMLT not shown for clarity)



**3'-6" RETAINING WALL ELEVATION (PROJECTED)**  
(Looking at F.F.)

\* Cut to fit, use remainder of bars at opposite end of wall. See Cutting Diagram, Sheet ME-13B.  
\*\* Cut to fit where necessary, discard excess.



**5'-0" RETAINING WALL ELEVATION (PROJECTED)**  
(Looking at F.F.)

\* Cut to fit, use remainder of bars at opposite end of wall. See Cutting Diagram, Sheet ME-13B.  
\*\* Cut to fit where necessary, discard excess.

**NOTES**

1. F.F. and B.F. denote Front Face and Back Face, respectively.
2. HMLT denotes High Mast Light Tower.
3. Refer to HMLT Service Pad & Retaining Wall Details 2 for Bar Bending Diagrams, Bill of Material, Bar Sections and Details.
4. T/Wall slope is constant along the arc of any given radius.
5. Place horizontal tails of  $n_1(E)$  &  $n_2(E)$  bars radially.
6. PVC sleeves must be extended 6 inches beyond the edge of the concrete pad.
7. PVC sleeve for CCTV camera power feed (future). Sleeve must be capped unless noted otherwise on the plans.
8. Install ground wells 4'-6" as measured from centerline of the HMLT to centerline of the well. Adjust service pad reinforcement to miss wells.

BOWMAN, BARRETT & ASSOCIATES INC.  
CONSULTING ENGINEERS  
130 EAST RANDOLPH STREET SUITE 2650 CHICAGO, ILLINOIS 60601  
312.467.4400

REVISIONS	
NAME	DATE

ILLINOIS DEPARTMENT OF TRANSPORTATION  
F.A.I. 90/94 (DAN RYAN EXPRESSWAY)  
31st STREET TO I-57  
**HIGH MAST LIGHT TOWER SERVICE PAD & RETAINING WALL DETAILS 1**  
SCALE: NOT TO SCALE  
DATE: October 29, 2004  
DRAWN BY:  
CHECKED BY:

ME-13A

10/15/2004 01:59:58 PM