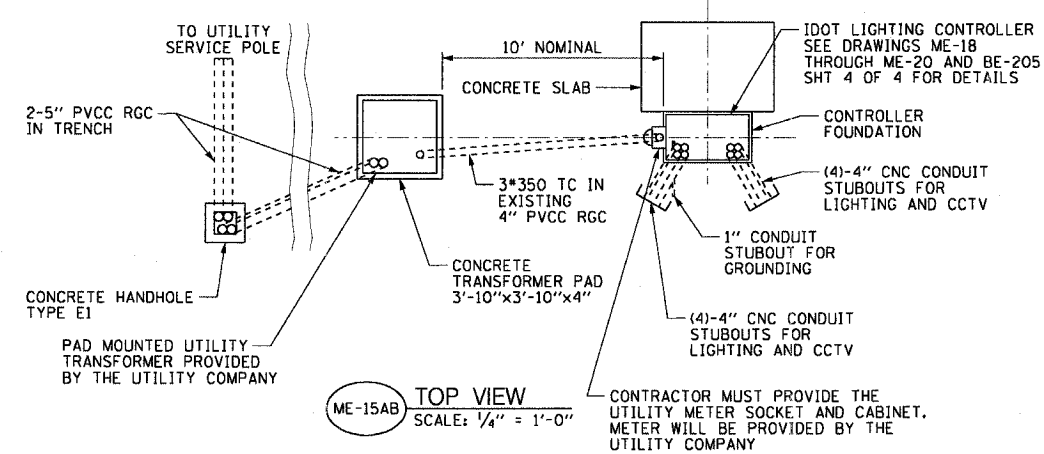
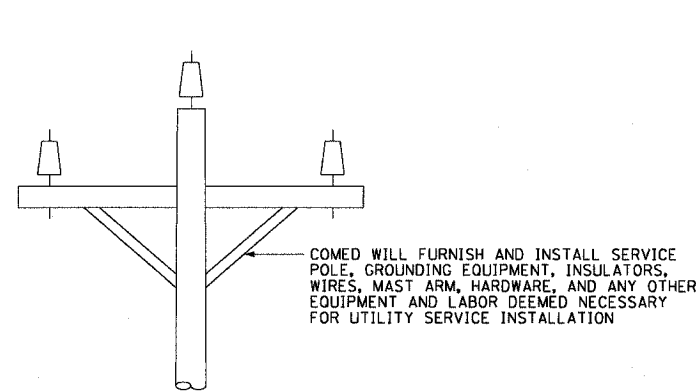


F.A.I. RTE.	SECTION	COUNTY	TOTAL SHEETS	SHEET NO.
90/94	2003-0311	COOK	976	58
STA.	TO STA.			
FED. ROAD DIST. NO. 1	ILLINOIS	FED. AID PROJECT		

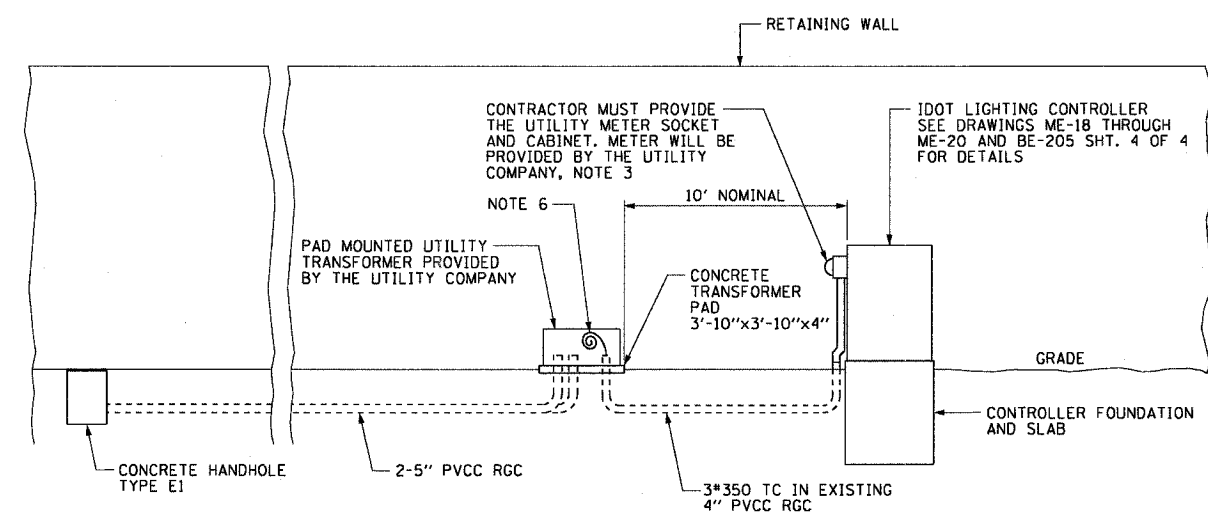
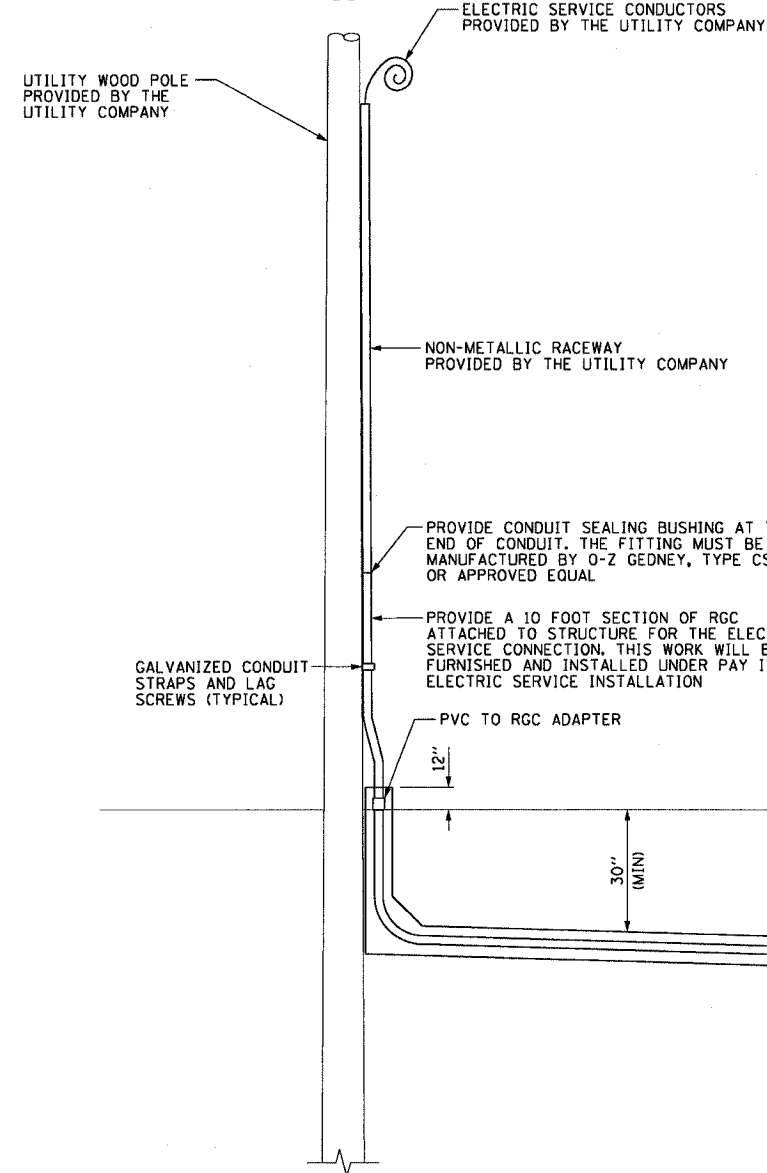
62583

**NOTES:**

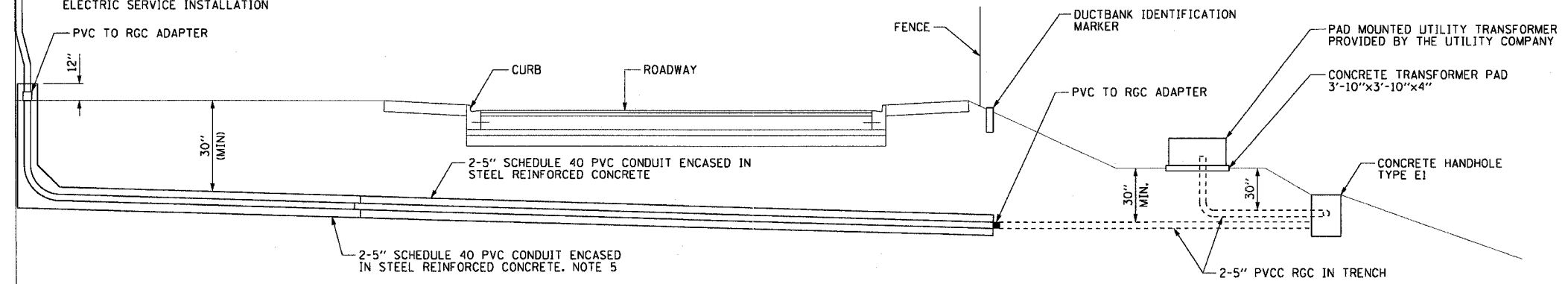
- SEE DRAWINGS ME-01 AND ME-02 FOR ELECTRICAL SYMBOLS AND ABBREVIATIONS.
- SEE ROADWAY PLAN DRAWINGS FOR CONSTRUCTION LIMITS.
- INTERCEPT EXISTING 4 INCH PVCC RGC STUBOUT AND PROVIDE NEW CONDUIT TO ELECTRIC METER SOCKET AS SHOWN.
- ALL WORK ASSOCIATED WITH THE INSTALLATION OF THE LIGHTING CONTROLLER UTILITY SERVICE FEED MUST BE COORDINATED WITH AND APPROVED BY COMED.
- ALL MATERIALS AND LABOR FOR THE INSTALLATION OF THE CONCRETE ENCASED DUCTBANK MUST MEET WITH ALL COMED REQUIREMENTS AND STANDARDS.
- THE CONTRACTOR MUST PROVIDE SUFFICIENT SLACK CABLES FOR TERMINATION BY COMED.



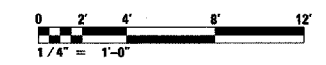
ME-15AB TOP VIEW SCALE: 1/4" = 1'-0"



ME-15AC ELEVATION VIEW SCALE: 1/4" = 1'-0"



ME-15AA CONDUIT INSTALLATION DETAIL FOR LIGHTING CONTROLLER ELECTRIC SERVICE SCALE: 1/4" = 1'-0" NOTE 4



ME-15A



REVISIONS	
NAME	DATE

ILLINOIS DEPARTMENT OF TRANSPORTATION  
F.A.I. 90/94 (DAN RYAN EXPRESSWAY)  
31st STREET TO I-57

CONDUIT INSTALLATION DETAILS FOR  
LIGHTING CONTROLLER ELECTRIC SERVICE

SCALE: AS SHOWN      DRAWN BY: CJM/HR  
DATE: October 29, 2004      CHECKED BY: WDS

17/22/2004 03:06:53 PM