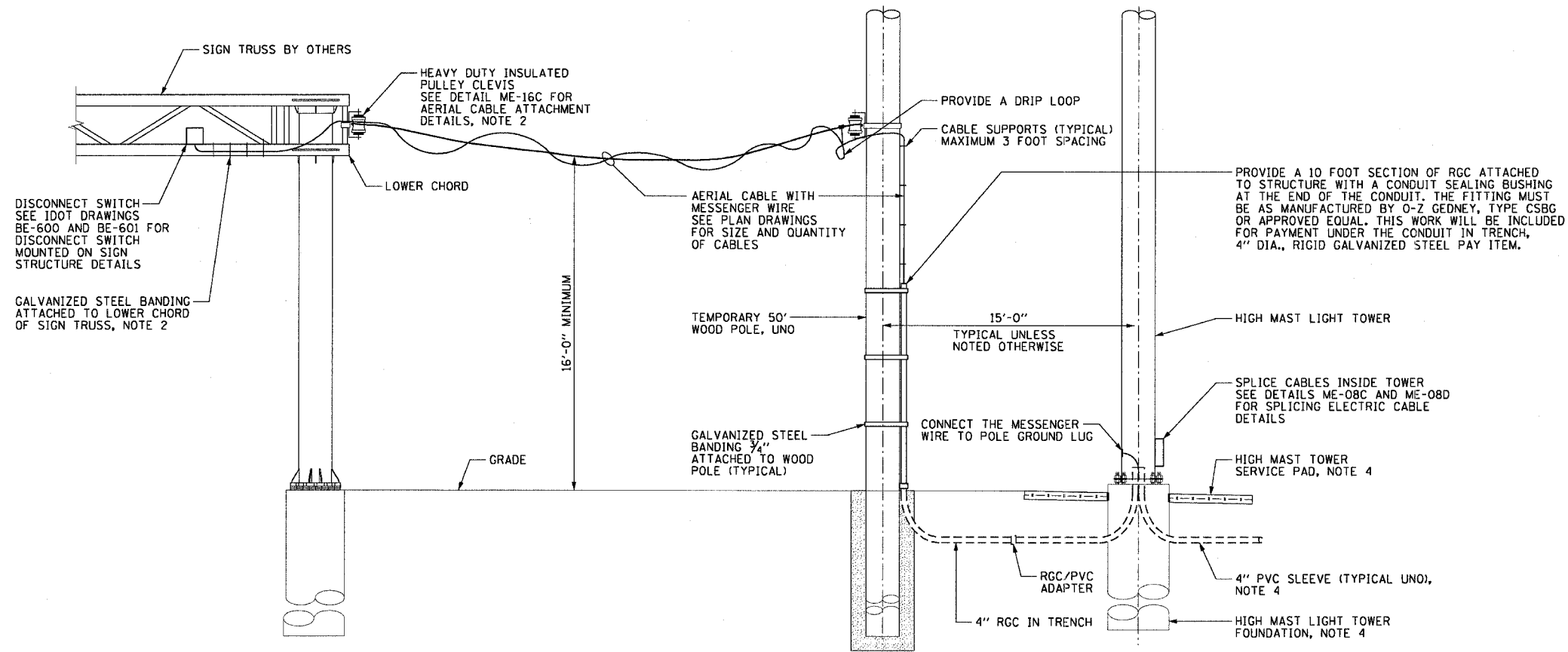


F.A.I. RTE.	SECTION	COUNTY	TOTAL SHEETS	SHEET NO.
90/94	2003-0311	COOK	976	64
STA.	TO STA.			
FED. ROAD DIST. NO. 1	ILLINOIS	FED. AID PROJECT		

62583

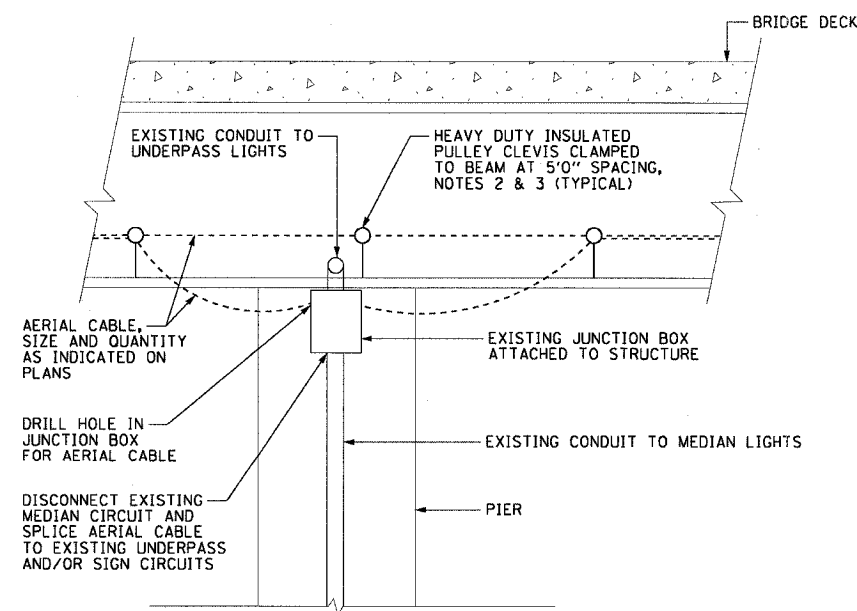
**NOTES:**

1. SEE DRAWINGS ME-01 AND ME-02 FOR ELECTRICAL SYMBOLS AND ABBREVIATIONS.
2. ALL WORK TO FURNISH AND INSTALL ALL HARDWARE REQUIRED FOR MOUNTING THE AERIAL CABLE TO THE STRUCTURE WILL BE INCLUDED IN THE COST OF THE AERIAL CABLE PAY ITEM.
3. HEAVY DUTY INSULATED PULLEY CLEVIS AND CLAMPS MAY BE SUBSTITUTED WITH OTHER EQUIPMENT AND MOUNTING METHOD UPON APPROVAL FROM THE ENGINEER.
4. SEE DRAWING ME-13 FOR CONDUIT INSTALLATION DETAILS FOR GROUND MOUNTED HIGH MAST LIGHT TOWERS.



**ME-25A** TEMPORARY CONNECTION TO SIGN STRUCTURE DETAIL  
NOT TO SCALE

NOTE: INSTALLATION DETAILS FOR TEMPORARY CONNECTION TO SIGN STRUCTURE SHOWN. TEMPORARY CONNECTION BETWEEN HIGH MAST TOWERS IS SIMILAR.



**ME-25B** AERIAL CABLE BRIDGE CROSSING DETAIL  
NOT TO SCALE

**CTE ENGINEERS**  
CONSOER TOWNSEND ENVIRODYNE ENGINEERS, INC.  
303 EAST WACKER DRIVE, SUITE 600  
CHICAGO, ILLINOIS 60601-5262, PHONE: (312) 538-0300

REVISIONS	
NAME	DATE

ILLINOIS DEPARTMENT OF TRANSPORTATION  
F.A.I. 90/94 (DAN RYAN EXPRESSWAY)  
31st STREET TO I-57

**TEMPORARY POWER FEED TO SIGN STRUCTURE DETAILS**

SCALE: NOT TO SCALE DRAWN BY: CJM  
DATE: October 29, 2004 CHECKED BY: WDS

ME-25

11/22/2004 10:01:37 AM