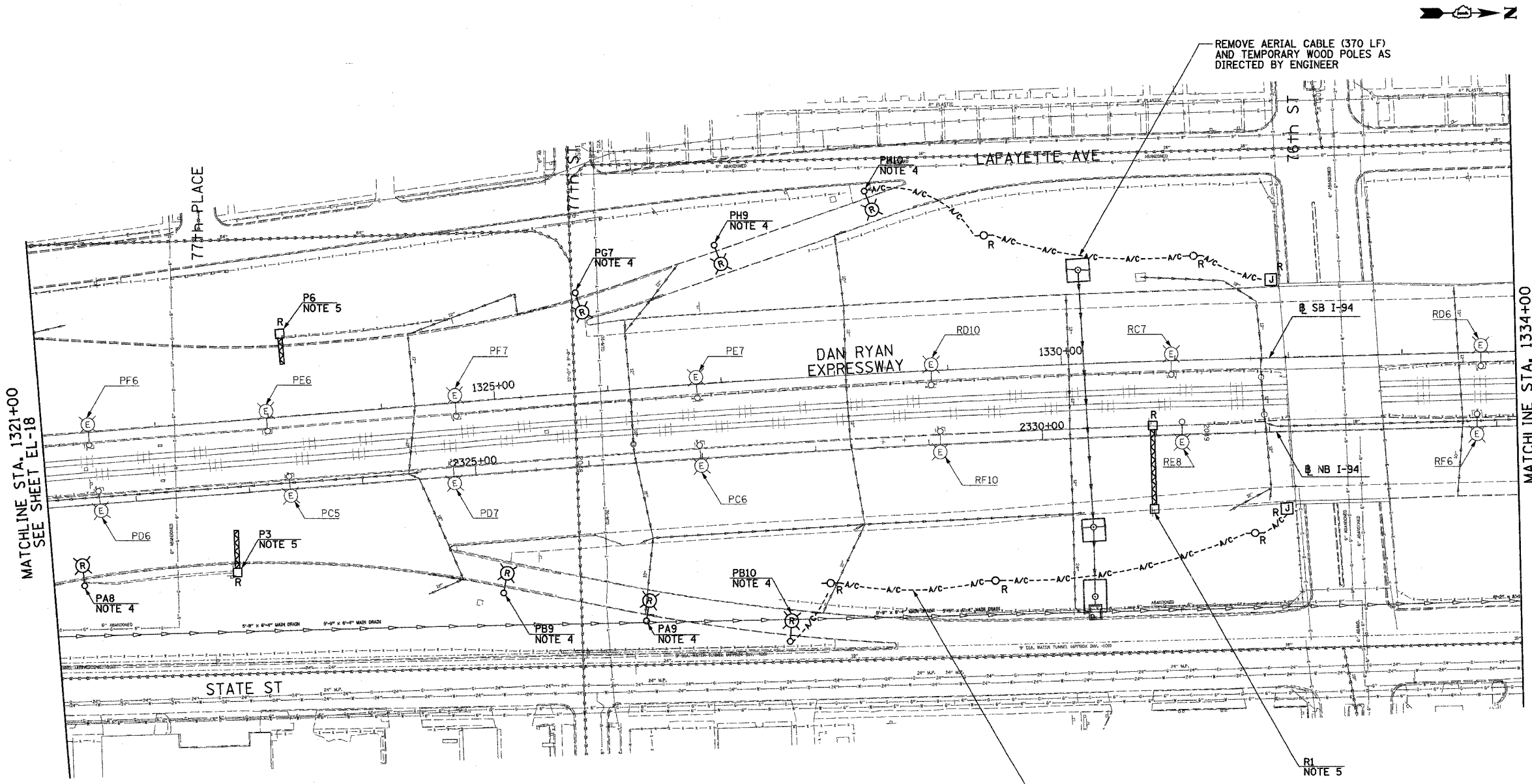


F.A.I. RTE.	SECTION	COUNTY	TOTAL SHEETS	SHEET NO.
90/94	2003-03II	COOK	976	41
STA. 1321+00		TO STA. 1334+00		
FED. ROAD DIST. NO.	ILLINOIS	FED. AID PROJECT		

62583



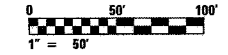
MATCHLINE STA. 1321+00
SEE SHEET EL-18

MATCHLINE STA. 1334+00
SEE SHEET EL-20

- NOTES:**
- SEE DRAWINGS ME-01 AND ME-02 FOR ELECTRICAL SYMBOLS AND ABBREVIATIONS.
 - UNLESS NOTED OTHERWISE, ALL ITEMS AND WORK SHOWN IN HEAVY LINE WEIGHT ON THIS DRAWING ARE PROPOSED NEW ITEMS OF WORK.
 - THE EXISTING ROADWAY LIGHTING SYSTEM SHALL REMAIN IN OPERATION UNTIL THE PROPOSED ROADWAY LIGHTING SYSTEM HAS BEEN INSTALLED, ENERGIZED, TESTED, AND ACCEPTED BY THE ENGINEER, UNLESS OTHERWISE DIRECTED BY THE ENGINEER.
 - REMOVAL OF LIGHT POLE AND LUMINAIRE ARE PART OF CONTRACT 62583. FOUNDATION REMOVAL SHALL BE PART OF CONTRACT 62694 AND 62695. COORDINATE REMOVAL SCHEDULE WITH CIVIL CONTRACTS 62694 AND 62695 OR AS OTHERWISE DIRECTED BY THE ENGINEER.
 - SIGN SHALL BE DISCONNECTED BACK TO NEXT SPLICE. SIGN STRUCTURE AND LUMINAIRES SHALL BE REMOVED UNDER SEPARATE CONTRACT. COORDINATE WITH CONTRACTS 62694 AND 62695. NOTE: EXISTING SIGN P3 SHALL NOT BE DISCONNECTED UNTIL PROPOSED SIGN P1 IS INSTALLED AND OPERATIONAL.

REMOVE AERIAL CABLE (370 LF)
AND TEMPORARY WOOD POLES AS
DIRECTED BY ENGINEER

REMOVE AERIAL CABLE (460 LF)
AND TEMPORARY WOOD POLES AS
DIRECTED BY ENGINEER



EL-19

REVISIONS		ILLINOIS DEPARTMENT OF TRANSPORTATION F.A.I. 90/94 (DAN RYAN EXPRESSWAY) 31st STREET TO I-57 ROADWAY LIGHTING PLANS EXISTING CONDITIONS, TEMPORARY AND REMOVAL
NAME	DATE	

SCALE: 1"=50' DRAWN BY: SP
DATE: OCTOBER 29, 2004 CHECKED BY: TM

SINGH
SINGH & ASSOCIATES, INC.
CONSULTING ENGINEERS

300 W. ADAMS ST.
CHICAGO, IL 60606
TEL: (312) 629-0240
FAX: (312) 629-8449

10/20/2004 6:12:30 PM