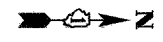
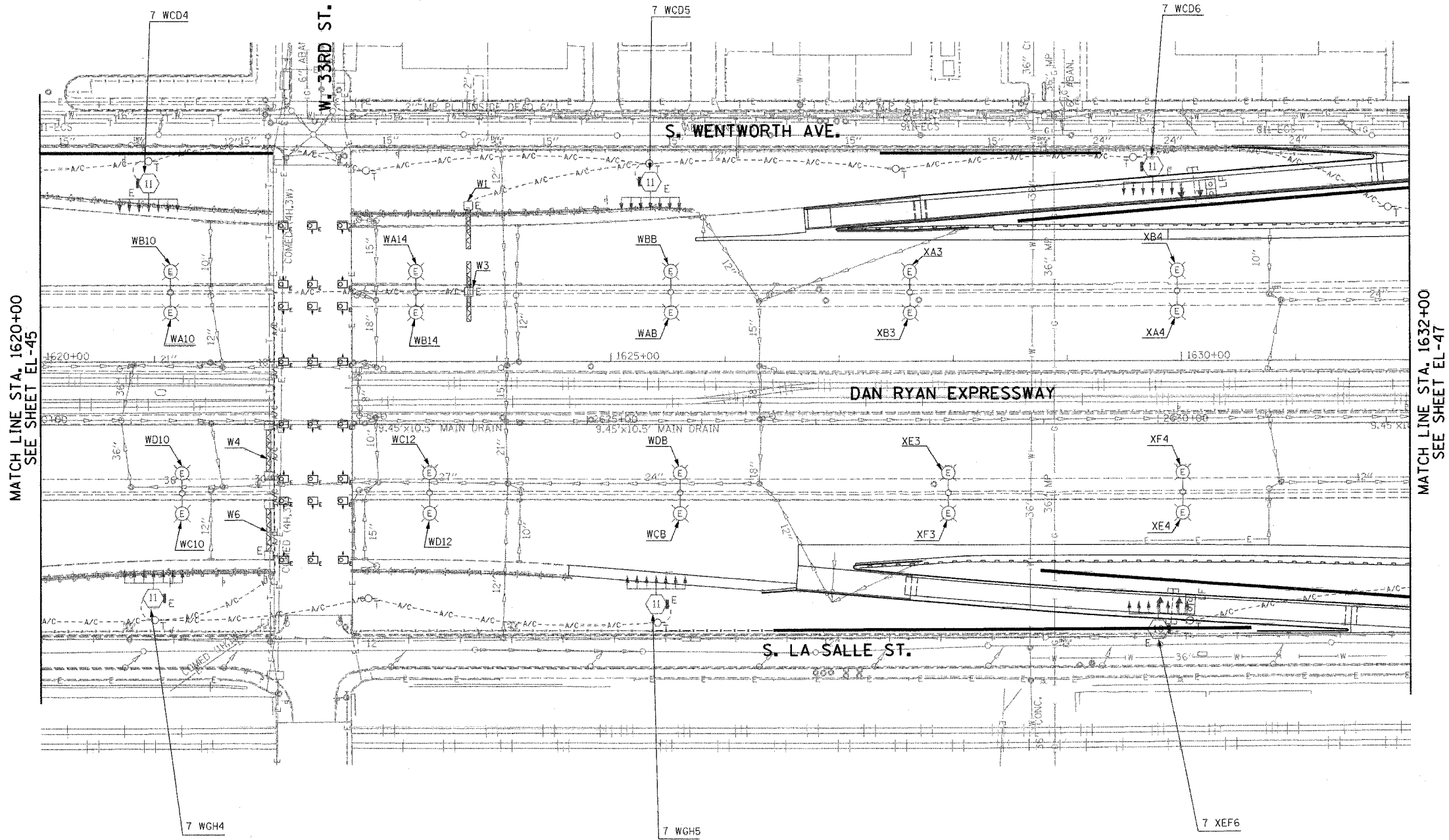


F.A.I. RTE.	SECTION	COUNTY	TOTAL SHEETS	SHEET NO.
94/90	2003-0311	COOK	976	118
STA. 1620+00		TO STA. 1632+00		
FED. ROAD DIST. NO.	ILLINOIS	FED. AID PROJECT		
62583				



NOTES:
 1. SEE DRAWINGS ME-01 AND ME-02 FOR ELECTRICAL SYMBOLS, AND ABBREVIATIONS.

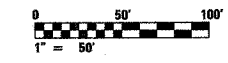


MATCH LINE STA. 1620+00
SEE SHEET EL-45

MATCH LINE STA. 1632+00
SEE SHEET EL-47

EL-46

KAM ENGINEERING, INC.
 CONSULTING ENGINEERS
 707A Davis Road, Suite 205
 Elgin, Illinois 60123-1369



REVISIONS	
NAME	DATE

ILLINOIS DEPARTMENT OF TRANSPORTATION
 F.A.I. 94/90 (DAN RYAN EXPRESSWAY)
 31st STREET TO I-57

ROADWAY LIGHTING PLANS
EXISTING CONDITIONS AND DEMOLITION

SCALE: 1"=50'
 DATE: OCTOBER 29, 2004

DRAWN BY: BL
 CHECKED BY: SM

09/15/2004 09:34:09 AM