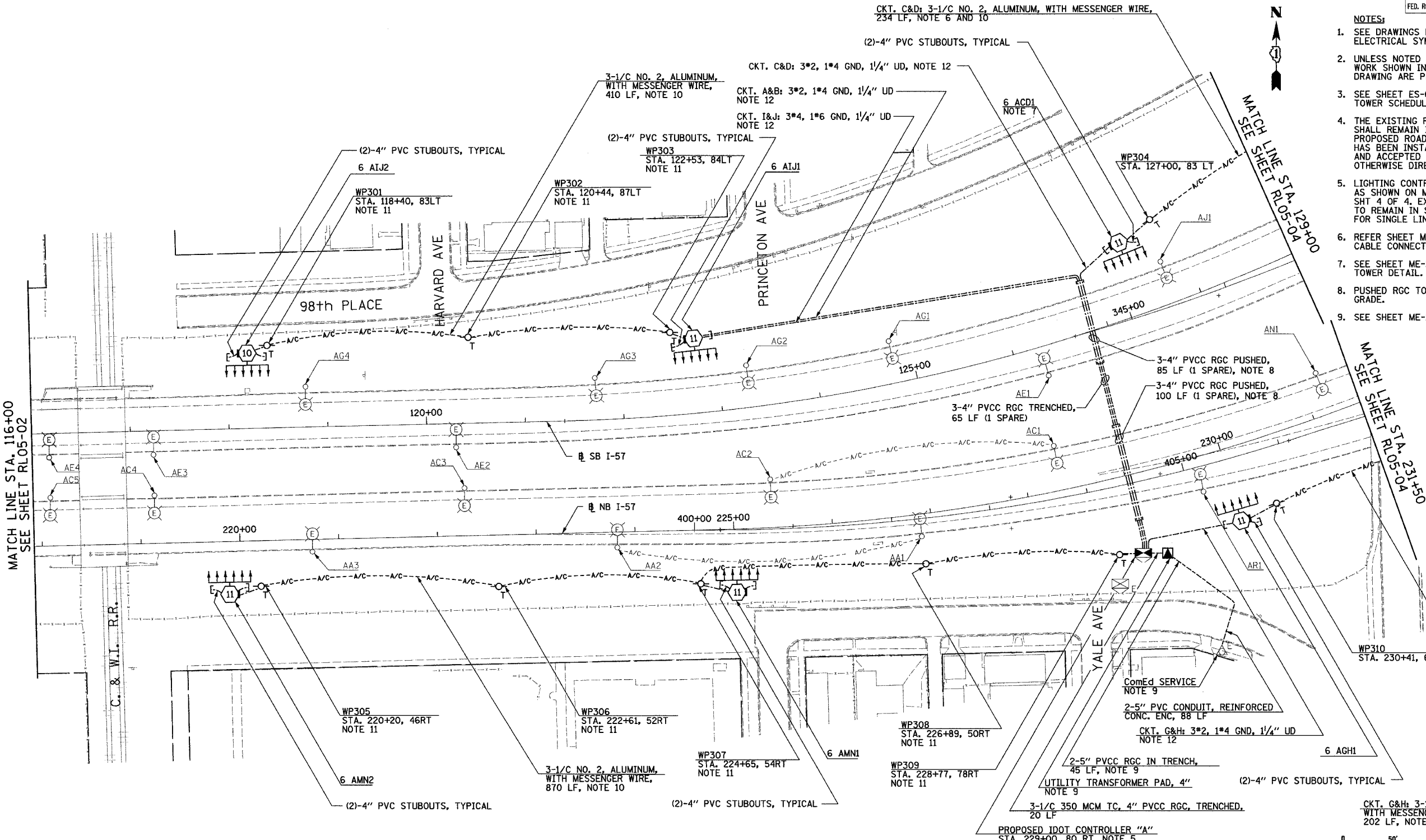
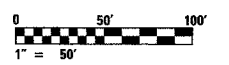


F.A.I. RTE.	SECTION	COUNTY	TOTAL SHEETS	SHEET NO.
90/94	2003-0311	COOK	976	123
STA. 116+00		TO STA. 129+00		
FED. ROAD DIST. NO.	ILLINOIS	FED. AID PROJECT		
			62583	



- NOTES:**
- SEE DRAWINGS ME-01 AND ME-02 FOR ELECTRICAL SYMBOLS AND ABBREVIATIONS.
 - UNLESS NOTED OTHERWISE, ALL ITEMS AND WORK SHOWN IN HEAVY LINE WEIGHT ON THIS DRAWING ARE PROPOSED NEW ITEMS OF WORK.
 - SEE SHEET ES-01 FOR HIGH MAST LIGHT TOWER SCHEDULE.
 - THE EXISTING ROADWAY LIGHTING SYSTEM SHALL REMAIN IN OPERATION UNTIL THE PROPOSED ROADWAY LIGHTING SYSTEM HAS BEEN INSTALLED, ENERGIZED, TESTED, AND ACCEPTED BY THE ENGINEER, UNLESS OTHERWISE DIRECTED BY THE ENGINEER.
 - LIGHTING CONTROLLER SHALL BE INSTALLED AS SHOWN ON ME-18, ME-19, ME-20, AND BE-205 SHT. 4 OF 4. EXISTING LIGHTING CONTROLLER TO REMAIN IN SERVICE. REFER SHEET SLO5-01 FOR SINGLE LINE DIAGRAM.
 - REFER SHEET ME-16 FOR TEMPORARY AERIAL CABLE CONNECTION.
 - SEE SHEET ME-25 FOR TEMPORARY WIRING TO TOWER DETAIL.
 - PUSHED RGC TO BE MINIMUM 66" BELOW FINAL GRADE.
 - SEE SHEET ME-15A FOR ComEd SERVICE DETAILS.

- NOTES CONTINUED:**
- AERIAL CABLE AND TEMPORARY WOOD POLES SHALL BE REMOVED AFTER HIGH MAST LIGHT TOWERS ARE PERMANENTLY WIRED AND ACCEPTED BY THE ENGINEER.
 - TEMPORARY WOOD POLES SHALL BE INSERTED IN GROUND TO ACCOMMODATE PROPOSED GRADING.
 - TRENCH UNIT DUCT A MINIMUM OF 5 FT BELOW EXISTING GRADE TO PERMIT FINAL GRADING WITHOUT DAMAGE TO UNIT DUCT OR AS DIRECTED BY THE ENGINEER.



REVISIONS	
NAME	DATE

ILLINOIS DEPARTMENT OF TRANSPORTATION
 F.A.I. 90/94 (DAN RYAN EXPRESSWAY)
 31st STREET TO I-57
 ROADWAY LIGHTING PLANS
 PROPOSED IMPROVEMENTS 2005

SCALE: 1"=50'
 DATE: OCTOBER 29, 2004

DRAWN BY: VRK
 CHECKED BY: TM

SINGH
 SINGH & ASSOCIATES, INC.
 CONSULTING ENGINEERS

300 W. ADAMS ST.
 CHICAGO, IL 60606
 TEL: (312) 629-0240
 FAX: (312) 629-8449

11/22/2004 6:47:45 PM