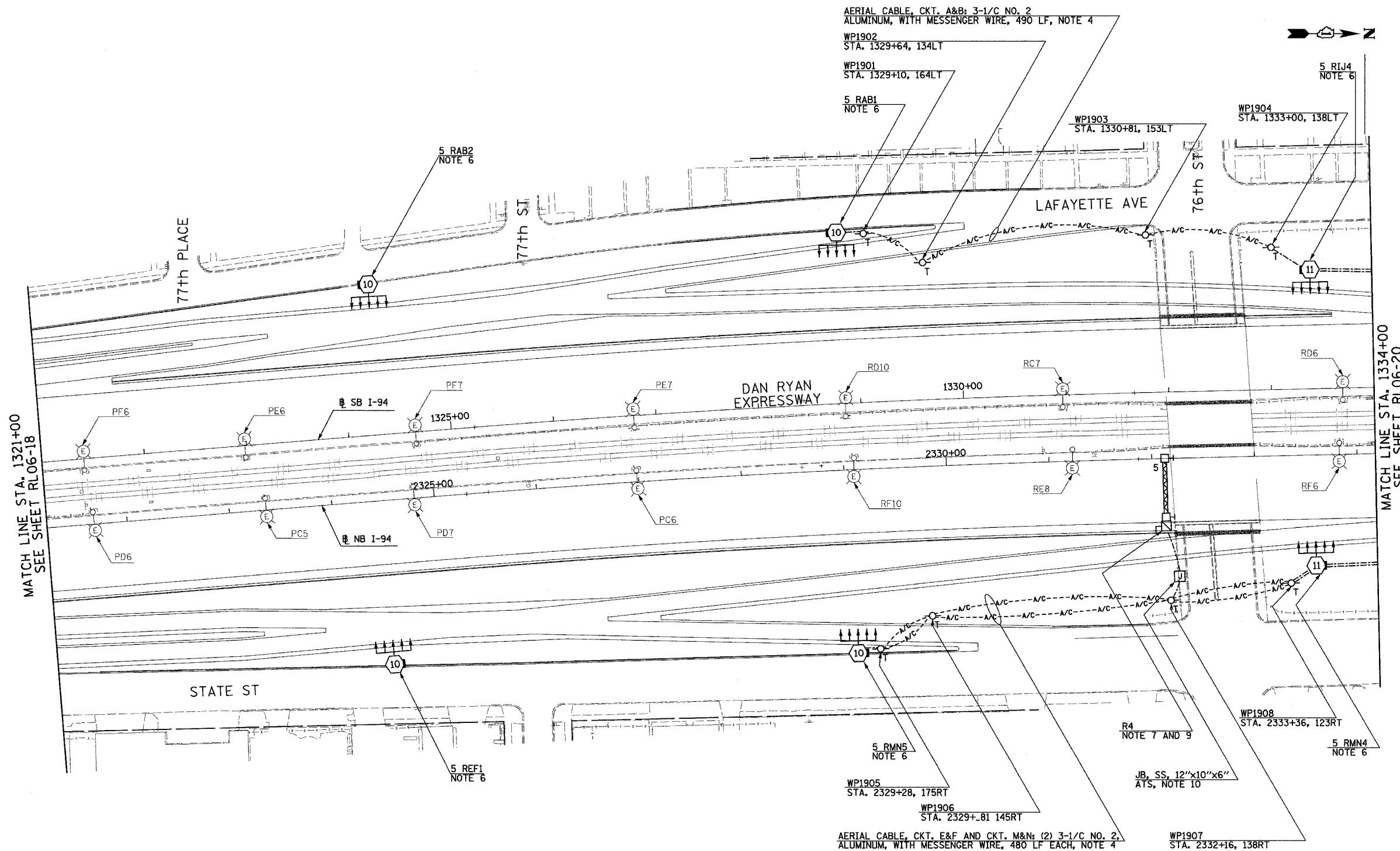


F.A.I. RTE.	SECTION	COUNTY	TOTAL SHEETS	SHEET NO.
90/94	2003-0311	COOK	976	180
STA. 1321+00		TO STA. 1334+00		
FED. ROAD DIST. NO.		ILLINOIS FED. AID PROJECT		

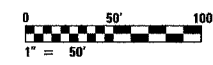
62583



- NOTES:**
- SEE DRAWINGS ME-01 AND ME-02 FOR ELECTRICAL SYMBOLS AND ABBREVIATIONS.
 - UNLESS NOTED OTHERWISE, ALL ITEMS AND WORK SHOWN IN HEAVY LINE WEIGHT ON THIS DRAWING ARE PROPOSED NEW ITEMS OF WORK.
 - THE EXISTING ROADWAY LIGHTING SYSTEM SHALL REMAIN IN OPERATION UNTIL THE PROPOSED ROADWAY LIGHTING SYSTEM HAS BEEN INSTALLED, ENERGIZED, TESTED, AND ACCEPTED BY THE ENGINEER, UNLESS OTHERWISE DIRECTED BY THE ENGINEER.
 - REFER SHEET ME-16 FOR TEMPORARY AERIAL CABLE CONNECTION.
 - WIRING FOR PROPOSED ROADWAY LIGHTING AND SIGNS FOR RAMP BETWEEN 79th AND 76th STREET NOT COMPLETE. ANY REQUIRED DUCTBANKS SHALL BE PROVIDED UNDER SEPARATE CONTRACT. ESTIMATED QUANTITIES ARE INCLUDED IN COST ESTIMATE AS FOLLOWS: 3*2, 1*4 GND, 1/4" UD, 3500 LF.
 - INSTALL LIGHT TOWER ONLY. FOUNDATION SHALL BE PROVIDED UNDER SEPARATE CONTRACT. COORDINATE WITH CIVIL CONTRACTS AND AS DIRECTED BY THE ENGINEER.
 - SIGN LUMINAIRES, DISCONNECT SWITCH AND WIRING SHALL BE PROVIDED UNDER THIS CONTRACT. SIGN STRUCTURE SHALL BE INSTALLED UNDER SEPARATE CONTRACT.
 - SEE DRAWING UL-18 FOR 76th STREET UNDERPASS LIGHTING PLAN.
 - REFER TO DETAIL ME-06A FOR TYPICAL TRANSITION FROM UNIT DUCT TO BRIDGE MOUNTED SIGN STRUCTURE COST FOR TRANSITION SHALL BE INCLUDED UNDER "ELECTRIC CONNECTION TO SIGN STRUCTURE" PAY ITEM.
 - ALL JUNCTION BOXES MOUNTED ON OVERPASS STRUCTURES SHALL BE INSTALLED AS SHOWN ON DRAWING ME-06, UNLESS OTHERWISE NOTED.

MATCH LINE STA. 1321+00
SEE SHEET RL06-18

MATCH LINE STA. 1334+00
SEE SHEET RL06-20



RL06-19

SINGH
SINGH & ASSOCIATES, INC.
CONSULTING ENGINEERS

300 W. ADAMS ST.
CHICAGO, IL 60606
TEL: (312) 629-0240
FAX: (312) 629-8449

REVISIONS		ILLINOIS DEPARTMENT OF TRANSPORTATION F.A.I. 90/94 (DAN RYAN EXPRESSWAY) 31st STREET TO I-57 ROADWAY LIGHTING PLANS PROPOSED IMPROVEMENTS 2006
NAME	DATE	
REVISOR	01/21/05	SCALE: 1"=50' DATE: OCTOBER 29, 2004
		DRAWN BY: VG CHECKED BY: TM

1/25/2005 12:23:58 PM

1/25/2005 12:23:58 PM