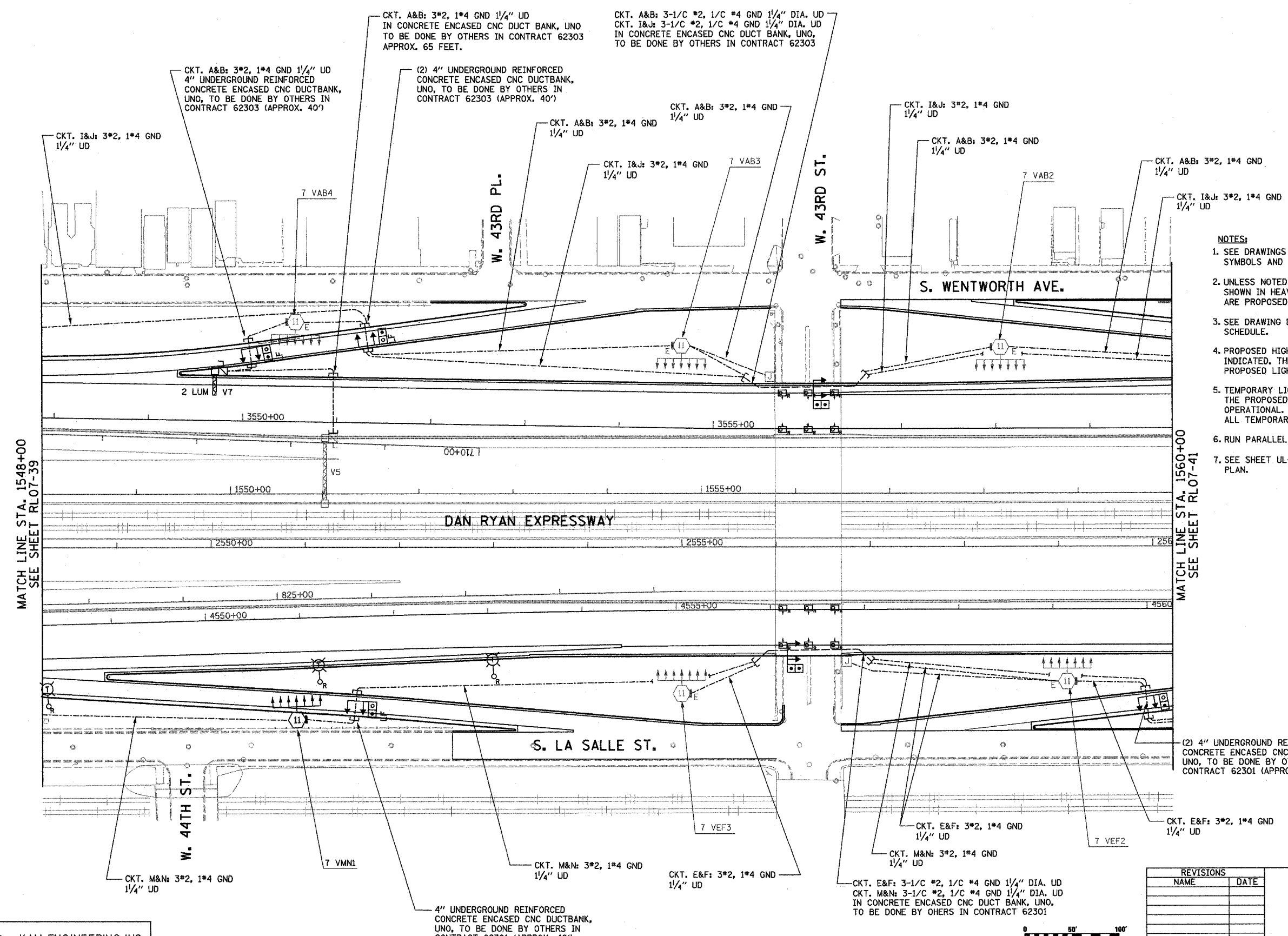


F.A.I. RTE.	SECTION	COUNTY	TOTAL SHEETS	SHEET NO.
94/90	2003-0311	COOK	976	248
STA. 1548+00		TO STA. 1560+00		
FED. ROAD DIST. NO.	ILLINOIS	FED. AID PROJECT		

62583



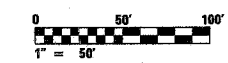
- NOTES:**
- SEE DRAWINGS ME-01 AND ME-02 FOR ELECTRICAL SYMBOLS AND ABBREVIATIONS.
 - UNLESS NOTED OTHERWISE, ALL ITEMS AND WORK SHOWN IN HEAVY LINE WEIGHT ON THIS DRAWING ARE PROPOSED NEW ITEMS AND WORK.
 - SEE DRAWING ES-07 FOR HIGH MAST LIGHT TOWER SCHEDULE.
 - PROPOSED HIGH MAST TOWERS SHALL BE INSTALLED AS INDICATED. THE TOWERS SHALL BE CONNECTED TO THE PROPOSED LIGHTING CONTROLLERS.
 - TEMPORARY LIGHTING SHALL REMAIN OPERATIONAL UNTIL THE PROPOSED HIGH MAST TOWERS ARE INSTALLED AND OPERATIONAL. AFTER HIGH MAST TOWERS ARE OPERATIONAL, ALL TEMPORARY POLES AND AERIAL CABLE SHALL BE REMOVED.
 - RUN PARALLEL RACEWAYS IN COMMON TRENCH.
 - SEE SHEET UL-01 FOR UNDERPASS LIGHTING PLAN.

MATCH LINE STA. 1548+00
SEE SHEET RL07-39

MATCH LINE STA. 1560+00
SEE SHEET RL07-41

RL07-40

KAM ENGINEERING, INC.
CONSULTING ENGINEERS
707A Davis Road, Suite 205
Elgin, Illinois 60123-1369



REVISIONS	
NAME	DATE

ILLINOIS DEPARTMENT OF TRANSPORTATION
F.A.I. 94/90 (DAN RYAN EXPRESSWAY)
31st STREET TO I-57

**ROADWAY LIGHTING PLANS
PROPOSED IMPROVEMENTS 2007**

SCALE: 1"=50'
DATE: OCTOBER 29, 2004
DRAWN BY: BL
CHECKED BY: SM

10/15/2004 02:26:23 PM