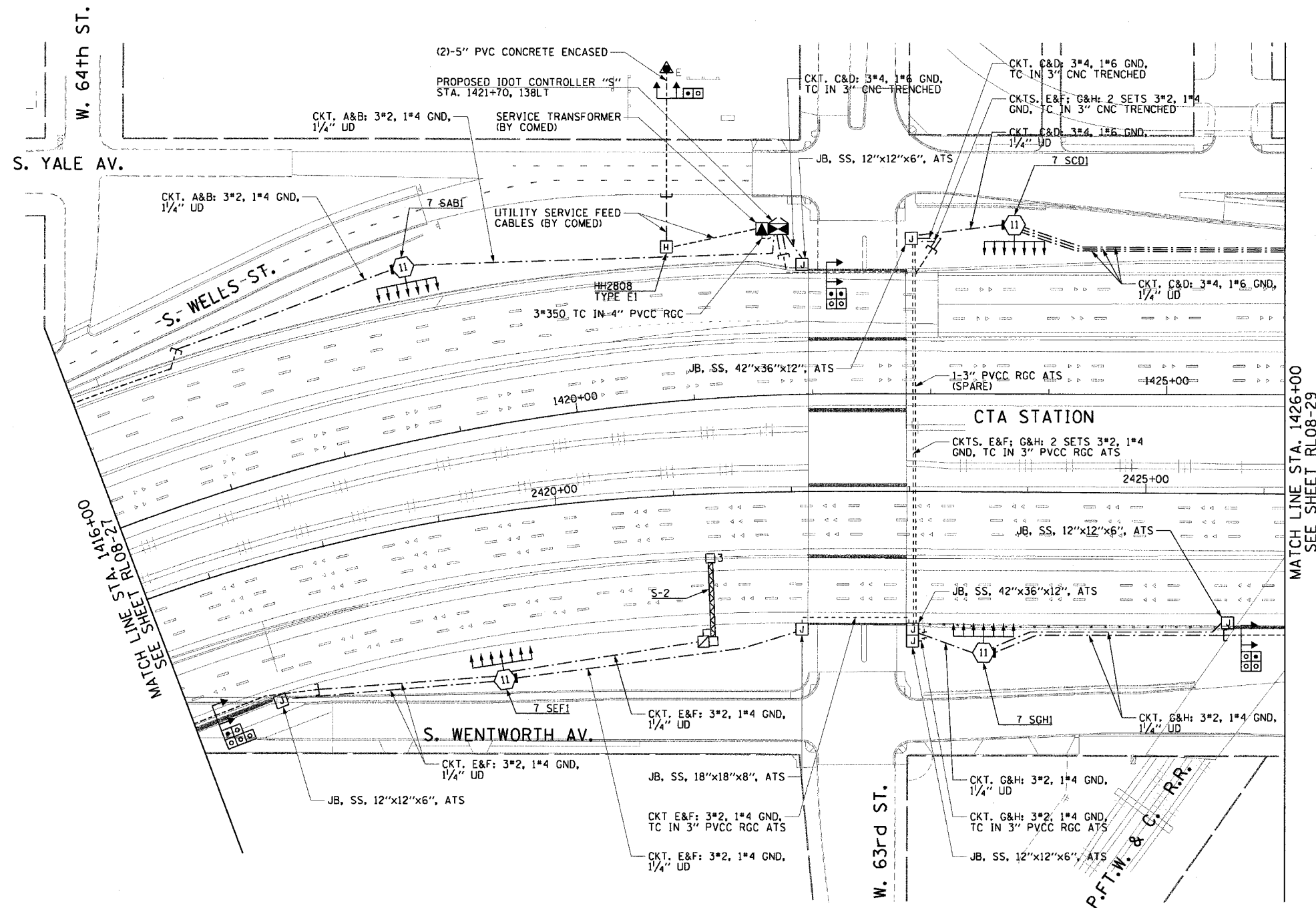


F.A.I. RTE.	SECTION	COUNTY	TOTAL SHEETS	SHEET NO.
90/94	2003-0311	COOK	976	284
STA. 1416+00.00 TO STA. 1426+00.00		FED. ROAD DIST. NO. 1 ILLINOIS FED. AID PROJECT		

62583

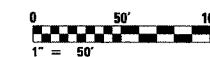
NOTES:

1. SEE DRAWINGS ME-01 AND ME-02 FOR ELECTRICAL SYMBOLS AND ABBREVIATIONS.
2. SEE DRAWING ES-04 FOR HIGH MAST LIGHT TOWER SCHEDULE.
3. SEE DRAWING UL-24 FOR WENTWORTH AV. UNDERPASS LIGHTING PLANS.
4. SEE DRAWING UL-25 FOR 63rd STREET UNDERPASS LIGHTING PLANS.
5. SEE DRAWING UL-26 FOR P. FT. W. & C. RAILROAD UNDERPASS LIGHTING PLANS.



MATCH LINE STA. 1426+00
SEE SHEET RL08-29

MATCH LINE STA. 1416+00
SEE SHEET RL08-27



RL08-28

REVISIONS	
NAME	DATE

ILLINOIS DEPARTMENT OF TRANSPORTATION
F.A.I. 90/94 (DAN RYAN EXPRESSWAY)
31st STREET TO I-57

ROADWAY LIGHTING PLANS
FINAL CONDITIONS

SCALE: 1"=50'
DATE: October 29, 2004

DRAWN BY: CJM
CHECKED BY: WDS

CTE ENGINEERS
CONSOER TOWNSEND ENVIRODYNE ENGINEERS, INC.
303 EAST WACKER DRIVE, SUITE 600
CHICAGO, ILLINOIS 60601-5212, PHONE: (312) 938-0300

11/19/2004 01:04:58 PM