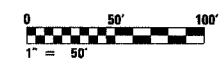
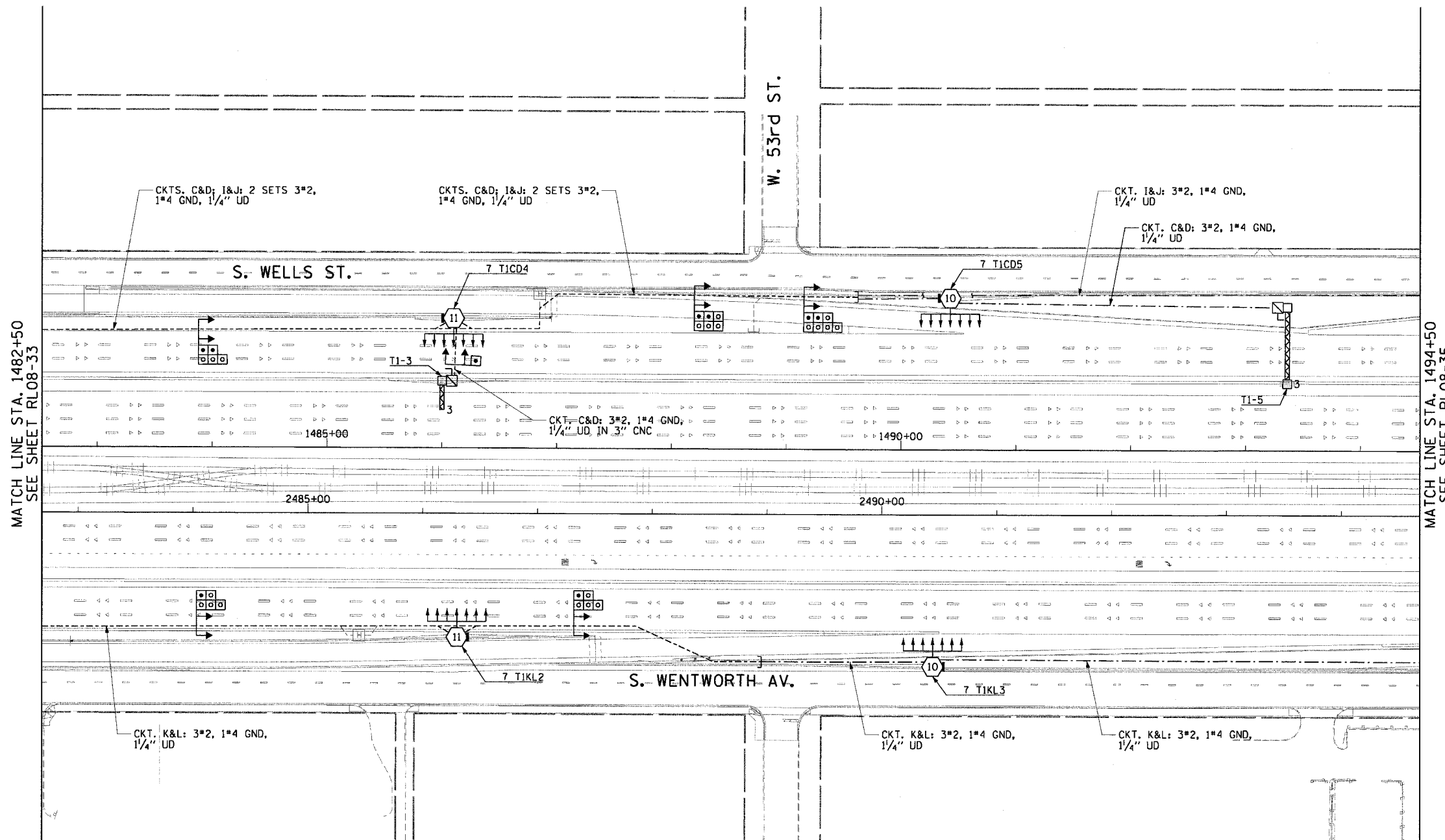


|                       |           |                           |              |           |
|-----------------------|-----------|---------------------------|--------------|-----------|
| F.A.I. RTE.           | SECTION   | COUNTY                    | TOTAL SHEETS | SHEET NO. |
| 90/94                 | 2003-0311 | COOK                      | 976          | 240       |
| STA. 1482+50.00       |           | TO STA. 1494+50.00        |              |           |
| FED. ROAD DIST. NO. 1 |           | ILLINOIS FED. AID PROJECT |              |           |

62583

**NOTES:**

- SEE DRAWINGS ME-01 AND ME-02 FOR ELECTRICAL SYMBOLS AND ABBREVIATIONS.
- SEE DRAWING ES-05 FOR HIGH MAST LIGHT TOWER SCHEDULE.



RL08-34

**CTE ENGINEERS**  
 CONSOER TOWNSEND ENVIRODYNE ENGINEERS, INC.  
 303 EAST WACKER DRIVE, SUITE 600  
 CHICAGO, ILLINOIS 60601-5202, PHONE: (312) 938-0300

| REVISIONS |      |
|-----------|------|
| NAME      | DATE |
|           |      |
|           |      |
|           |      |
|           |      |
|           |      |
|           |      |
|           |      |
|           |      |
|           |      |
|           |      |

ILLINOIS DEPARTMENT OF TRANSPORTATION  
 F.A.I. 90/94 (DAN RYAN EXPRESSWAY)  
 31st STREET TO I-57  
**ROADWAY LIGHTING PLANS  
 FINAL CONDITIONS**

SCALE: 1"=50'  
 DATE: October 29, 2004  
 DRAWN BY: CJM  
 CHECKED BY: WDS

m:\p10468\elec\16.com\1205.ssm\contract 2\2008\Final\1020342c\_rl08-34.dwg 11/19/2004 04:05:17 PM