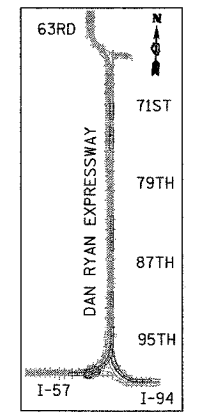
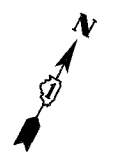
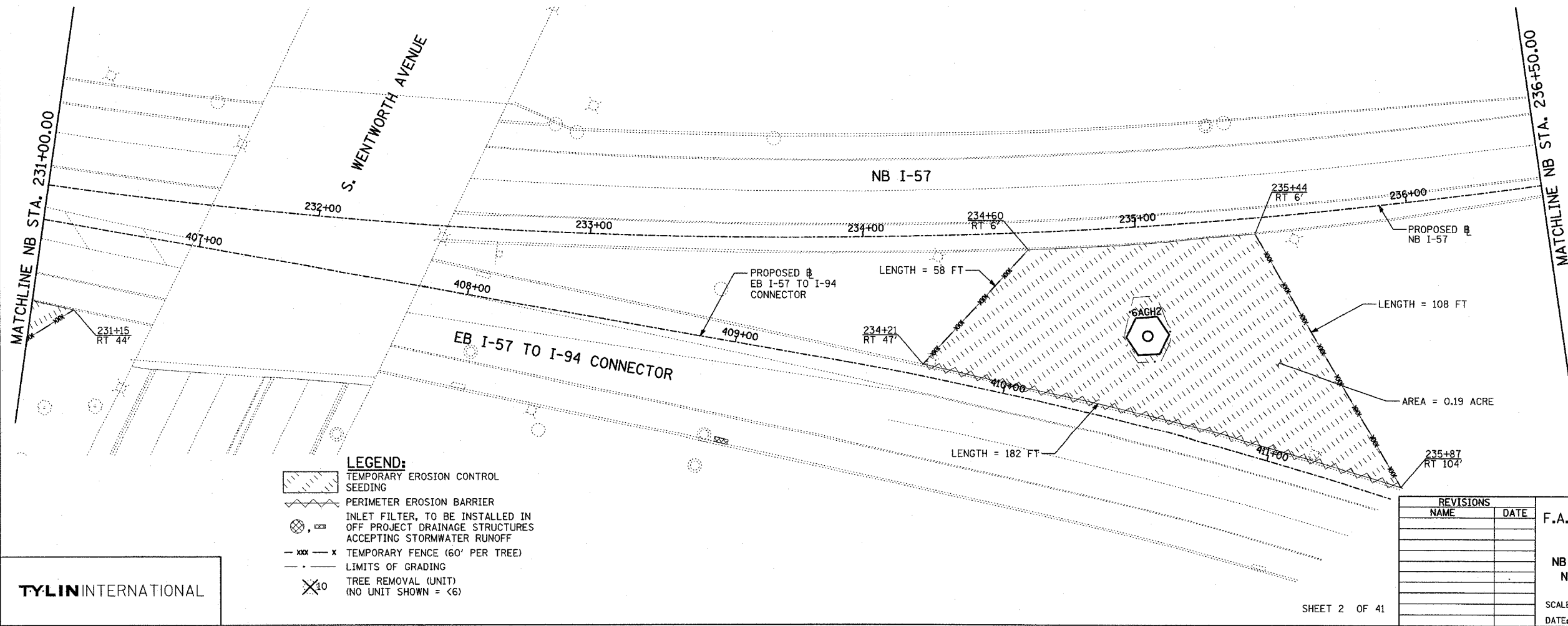
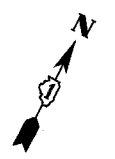
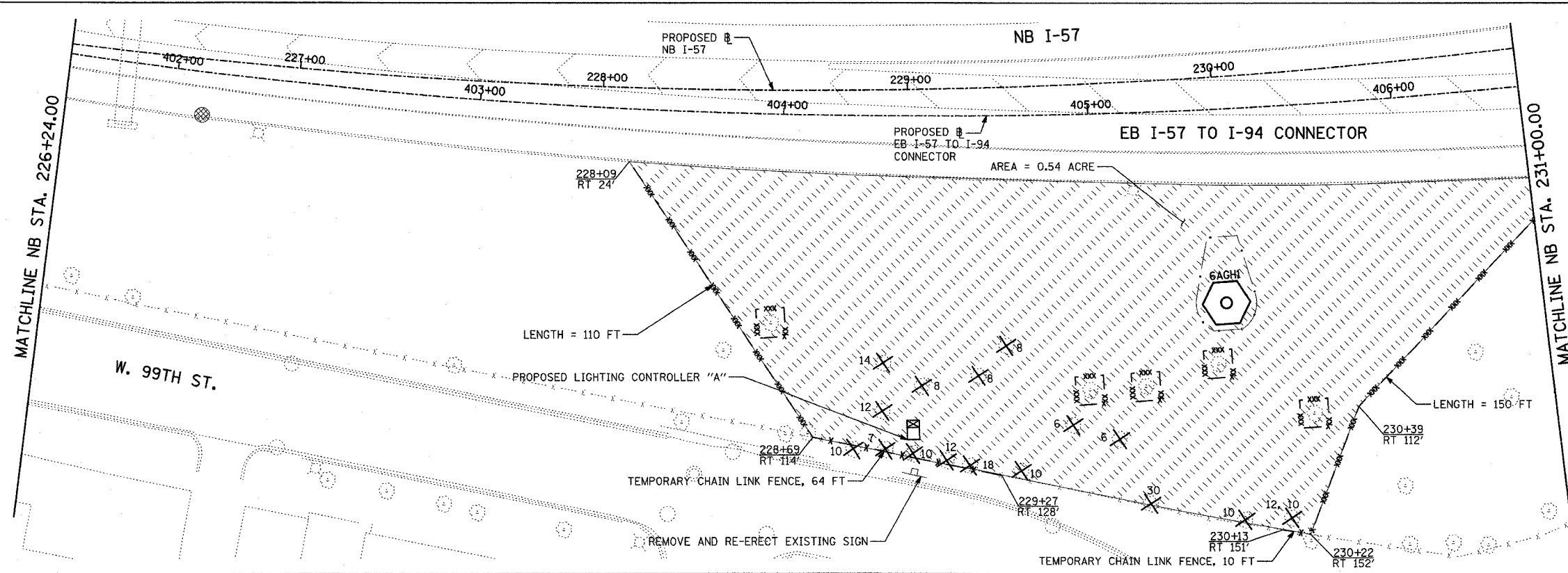
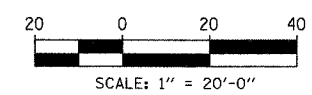


F.A.I. RTE.	SECTION	COUNTY	TOTAL SHEETS	SHEET NO.
90/94	2003-0311	COOK	476	413
STA.	TO STA.			
FED. ROAD DIST. NO.	ILLINOIS	FED. AID PROJECT	62583	



LOCATION MAP



- LEGEND:**
- TEMPORARY EROSION CONTROL SEEDING
  - PERIMETER EROSION BARRIER
  - INLET FILTER, TO BE INSTALLED IN OFF PROJECT DRAINAGE STRUCTURES ACCEPTING STORMWATER RUNOFF
  - TEMPORARY FENCE (60' PER TREE)
  - LIMITS OF GRADING
  - TREE REMOVAL (UNIT) (NO UNIT SHOWN = <6)

**TYLIN** INTERNATIONAL

REVISIONS	
NAME	DATE

ILLINOIS DEPARTMENT OF TRANSPORTATION  
 F.A.I. 90/94 (DAN RYAN EXPRESSWAY)  
 31st STREET TO I-57  
 EROSION CONTROL PLAN  
 NB I-57 AND EB I-57 TO I-94 CONNECTOR  
 NB I-57 STA. 226+24.00 TO 236+50.00

SCALE: 1"=20'  
 DATE: OCTOBER 29, 2004

DRAWN BY: RTM, JPA  
 CHECKED BY: JPM, MAG