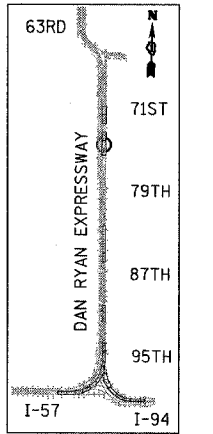
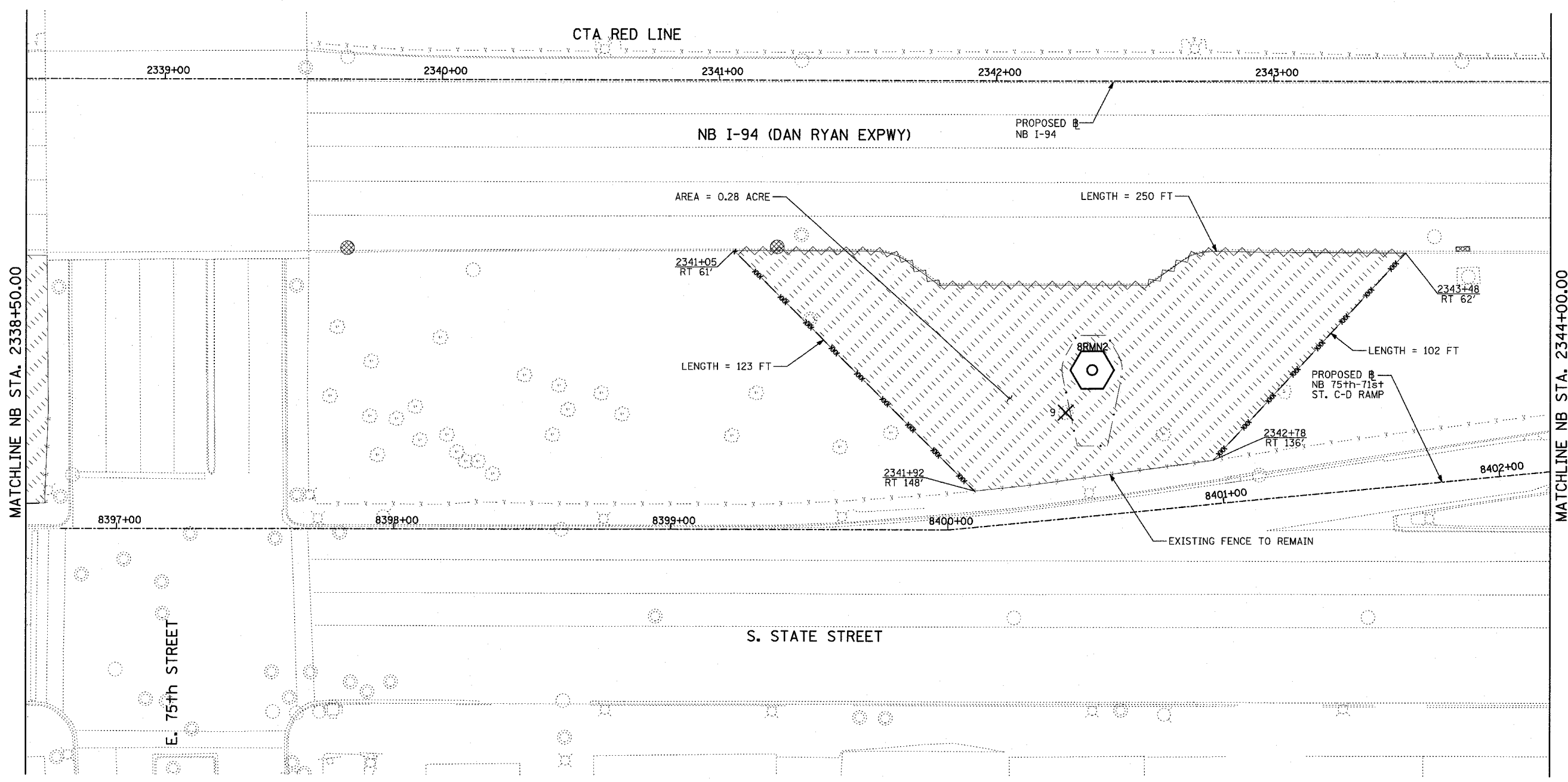
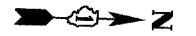
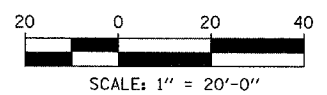


| | | | | |
|---------------------|-----------|------------------|--------------|-----------|
| F.A.I. RTE. | SECTION | COUNTY | TOTAL SHEETS | SHEET NO. |
| 90/94 | 2003-0311 | COOK | 976 | 422 |
| STA. | TO STA. | | | |
| FED. ROAD DIST. NO. | ILLINOIS | FED. AID PROJECT | | |

62583



LOCATION MAP



- LEGEND:**
- TEMPORARY EROSION CONTROL SEEDING
 - PERIMETER EROSION BARRIER
 - INLET FILTER, TO BE INSTALLED IN OFF PROJECT DRAINAGE STRUCTURES ACCEPTING STORMWATER RUNOFF
 - TEMPORARY FENCE (60' PER TREE)
 - LIMITS OF GRADING
 - TREE REMOVAL (UNIT) (NO UNIT SHOWN = <6)

| REVISIONS | |
|-----------|------|
| NAME | DATE |
| | |
| | |
| | |
| | |
| | |
| | |
| | |
| | |
| | |
| | |

ILLINOIS DEPARTMENT OF TRANSPORTATION
 F.A.I. 90/94 (DAN RYAN EXPRESSWAY)
 31st STREET TO I-57
 EROSION CONTROL PLAN
 NB 75th TO 71st STREET RAMP
 NB I-94 STA. 2338+50.00 TO 2344+00.00

SCALE: 1"=20'
 DATE: OCTOBER 29, 2004
 DRAWN BY: RTM, JPA
 CHECKED BY: JPM, MAG

SHEET 11 OF 41

TYLIN INTERNATIONAL

11/23/2004 06:04:41 PM