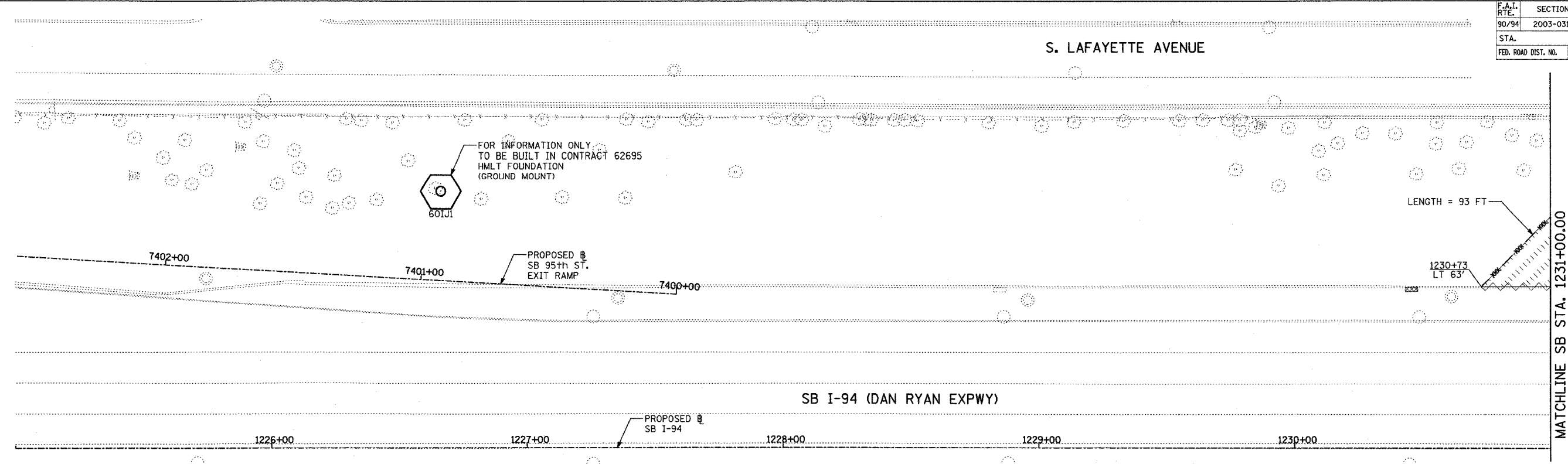
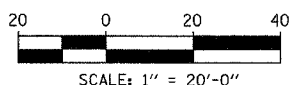
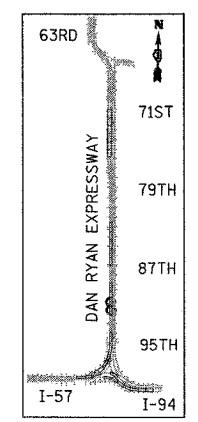
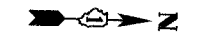
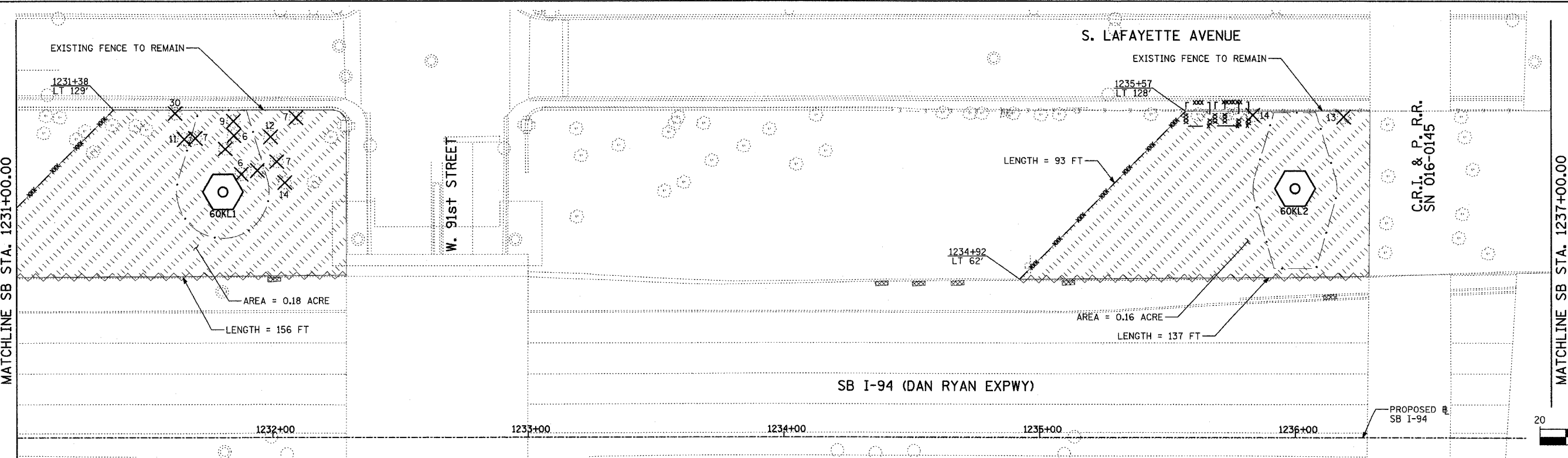


F.A.I. RTE.	SECTION	COUNTY	TOTAL SHEETS	SHEET NO.
90/94	2003-0311	COOK	976	433
STA.		TO STA.		
FED. ROAD DIST. NO.	ILLINOIS	FED. AID PROJECT		
		62583		

S. LAFAYETTE AVENUE



S. LAFAYETTE AVENUE



- LEGEND:**
- TEMPORARY EROSION CONTROL SEEDING
 - PERIMETER EROSION BARRIER
 - INLET FILTER, TO BE INSTALLED IN OFF PROJECT DRAINAGE STRUCTURES ACCEPTING STORMWATER RUNOFF
 - TEMPORARY FENCE (60' PER TREE)
 - LIMITS OF GRADING
 - TREE REMOVAL (UNIT) (NO UNIT SHOWN = <6)

REVISIONS	
NAME	DATE

ILLINOIS DEPARTMENT OF TRANSPORTATION
 F.A.I. 90/94 (DAN RYAN EXPRESSWAY)
 31st STREET TO I-57
 EROSION CONTROL PLAN
 SB I-94
 SB I-94 STA. 1225+00.00 TO 1237+00.00

SCALE: 1"=20'
 DATE: OCTOBER 29, 2004

DRAWN BY: RTM, JPA
 CHECKED BY: JPM, MAG

TYLIN INTERNATIONAL

0/22/2004 10:29:25 AM