

F.A.I. RTE.	SECTION	COUNTY	TOTAL SHEETS	SHEET NO.
90/94	2003-0311	COOK	976	468
STA.		TO STA.		
FED. ROAD DIST. NO.		ILLINOIS	FED. AID PROJECT	

62583

S. HARVARD AVE.

W. 98th PLACE

CHAIN LINK FENCE, 6', 73 FT
 118+12 LT 101
 118+03 LT 95
 118+74 LT 96
 FURNISH TEMPORARY CONCRETE BARRIER, 60 FT
 BITUMINOUS SHOULDERS SUPERPAVE, 6", 18 SY
 SEE RESTORATION DETAILS
 AREA = 918 SY

122+34 LT 111
 AREA = 1329 SY

117+43 LT 34

119+35 LT 35

121+59 LT 36

118+00

119+00 SB I-57

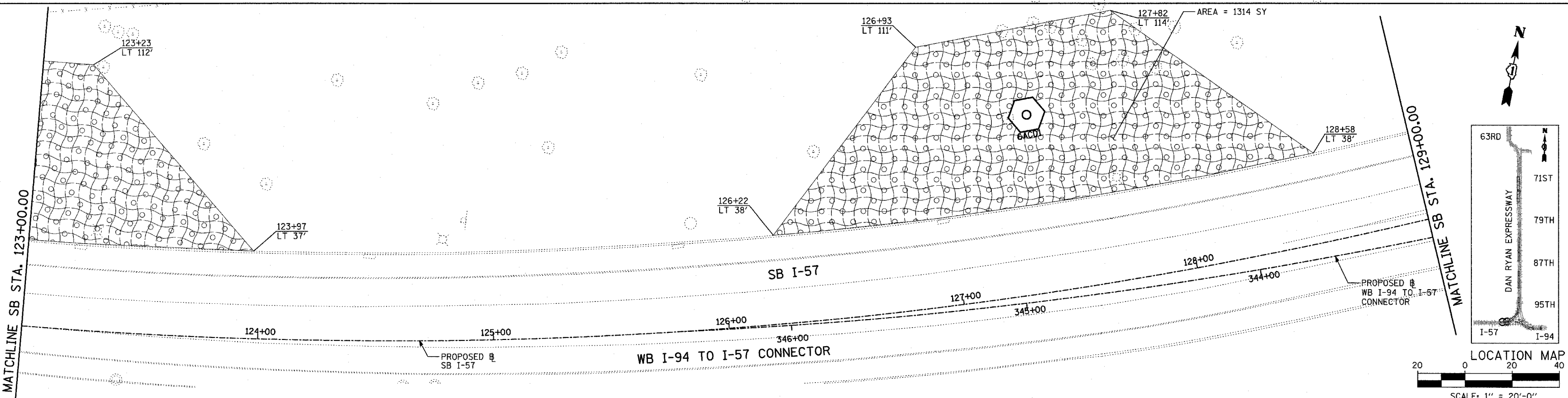
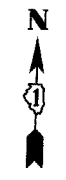
120+00

121+00

122+00

PROPOSED SB I-57

MATCHLINE SB STA. 123+00.00



123+23 LT 112

123+97 LT 37

126+93 LT 111

126+22 LT 38

127+82 LT 114

AREA = 1314 SY

128+58 LT 38

SB I-57

WB I-94 TO I-57 CONNECTOR

PROPOSED WB I-94 TO I-57 CONNECTOR

124+00

125+00

126+00

346+00

127+00

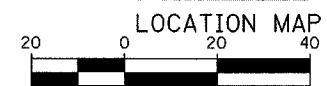
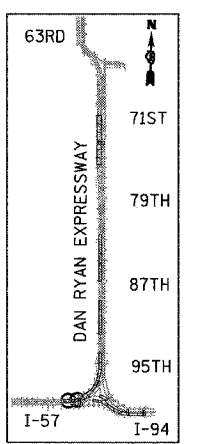
348+00

128+00

344+00

MATCHLINE SB STA. 123+00.00

MATCHLINE SB STA. 129+00.00



SCALE: 1" = 20'-0"

TYLIN INTERNATIONAL

LEGEND:



EROSION CONTROL BLANKET,
 SEEDING, CLASS 2A, NITROGEN,
 PHOSPHORUS, AND POTASSIUM
 FERTILIZER NUTRIENTS,
 TOPSOIL FURNISH AND PLACE, 4"

SHEET 15 OF 41

REVISIONS	
NAME	DATE

ILLINOIS DEPARTMENT OF TRANSPORTATION
 F.A.I. 90/94 (DAN RYAN EXPRESSWAY)
 31st STREET TO I-57
 RESTORATION PLAN
 SB I-57
 SB I-57 STA. 117+00.00 TO 129+00.00
 SCALE: 1"=20'
 DATE: OCTOBER 29, 2004
 DRAWN BY: RTM, JPA
 CHECKED BY: JPM, MAG