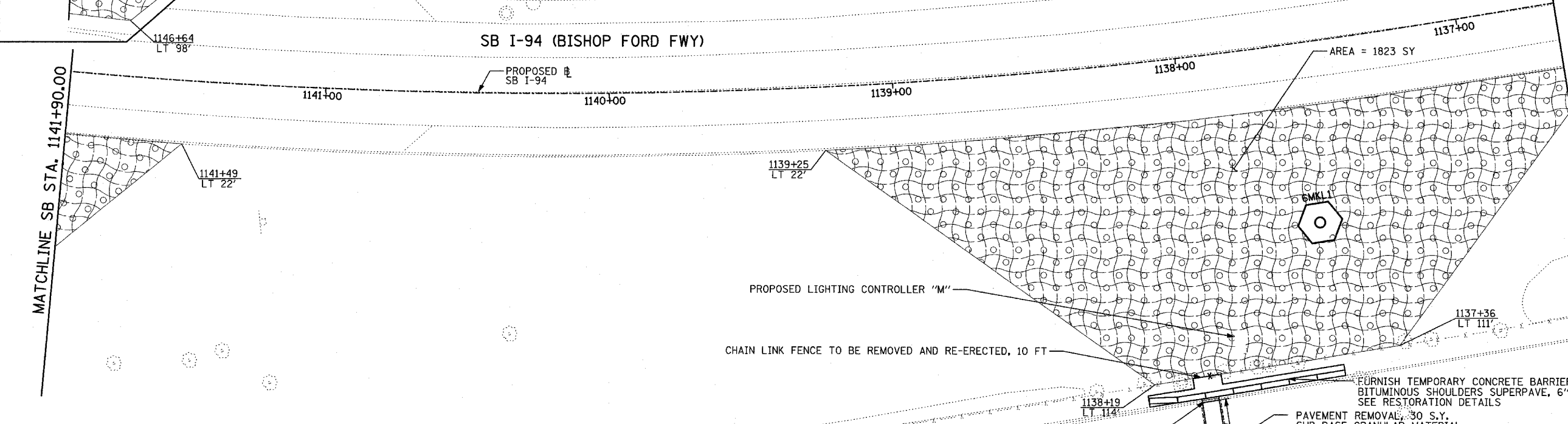
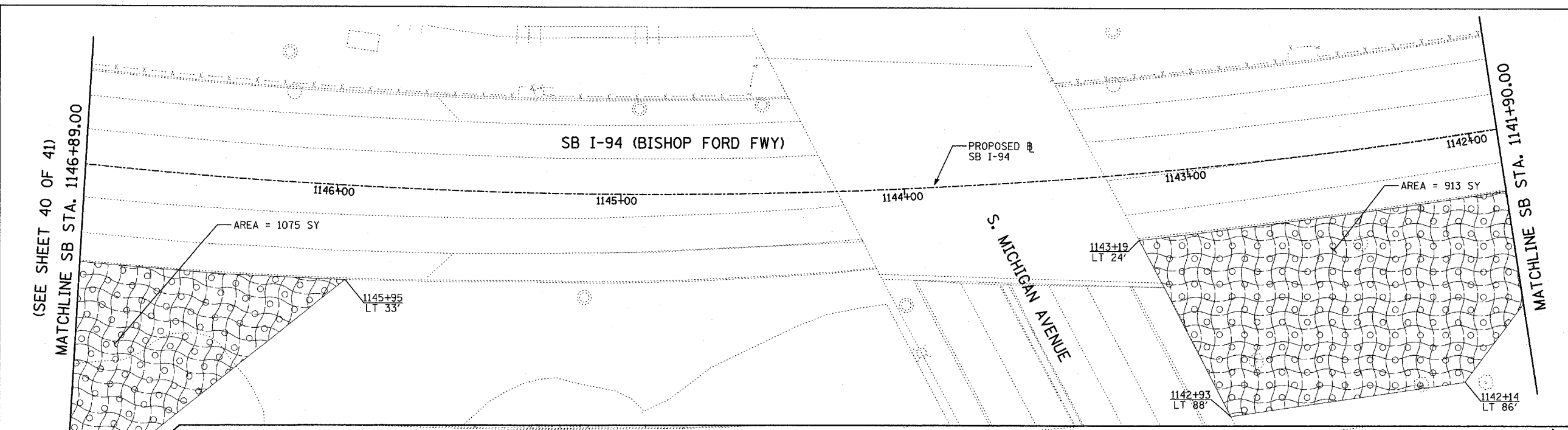


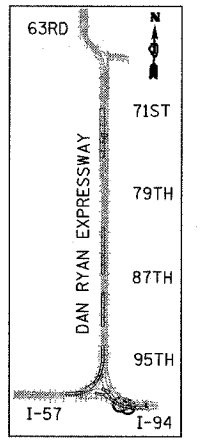
F.A.I. RTE.	SECTION	COUNTY	TOTAL SHEETS	SHEET NO.
90/94	2003-03II	COOK	976	492
STA.		TO STA.		
FED. ROAD DIST. NO.		ILLINOIS FED. AID PROJECT		

62583

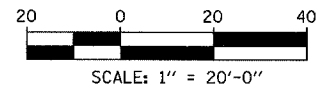


**LEGEND:**

EROSION CONTROL BLANKET, SEEDING, CLASS 2A, NITROGEN, PHOSPHORUS, AND POTASSIUM FERTILIZER NUTRIENTS, TOPSOIL FURNISH AND PLACE, 4"



LOCATION MAP



PROPOSED LIGHTING CONTROLLER "M"  
CHAIN LINK FENCE TO BE REMOVED AND RE-ERECTED, 10 FT

E. 100th STREET

6" COMB. C&G REMOVAL  
1 S.Y. SUB BASE GRANULAR MATERIAL, TYPE B 6"  
6" COMB. CONC. C&G, TYPE B-V.12  
2 S.Y., PROTECTIVE COAT

18' COMB. C&G REMOVAL  
3 S.Y. SUB BASE GRANULAR MATERIAL, TYPE B 6"  
18' COMB. CONC. C&G, TYPE B-V.12  
4 S.Y., PROTECTIVE COAT

PAVEMENT REMOVAL, 30 S.Y.  
SUB BASE GRANULAR MATERIAL, TYPE B 6", 30 S.Y.  
P.C.C. BASE COURSE, 10.5", 30 S.Y.

LIMIT OF BITUMINOUS SURFACE REMOVAL, 1 1/2", 35 S.Y.  
LIMIT OF BIT. CONC. SURFACE COURSE, 1 1/2" SUPERPAVE MIX "D" N70, 3 TONS  
BIT. MATERIALS (PRIME COAT), 0.04 TONS  
AGGREGATE (PRIME COAT), 0.10 TONS

PAVEMENT REMOVAL, 27 S.Y.  
SUB BASE GRANULAR MATERIAL, TYPE B 6", 27 S.Y.  
P.C.C. BASE COURSE, 8", 27 S.Y.  
PROTECTIVE COAT, 27 S.Y.

FURNISH TEMPORARY CONCRETE BARRIER, 70 FT  
BITUMINOUS SHOULDERS SUPERPAVE, 6", 35 SY  
SEE RESTORATION DETAILS

REVISIONS	
NAME	DATE

ILLINOIS DEPARTMENT OF TRANSPORTATION  
F.A.I. 90/94 (DAN RYAN EXPRESSWAY)  
31st STREET TO I-57  
RESTORATION PLAN  
SB I-94 (BISHOP FORD FWY)  
SB I-94 STA. 1146+89.00 TO 1136+65.00

SCALE: 1"=20'  
DATE: OCTOBER 29, 2004  
DRAWN BY: RTM, JPA  
CHECKED BY: JPM, MAG

