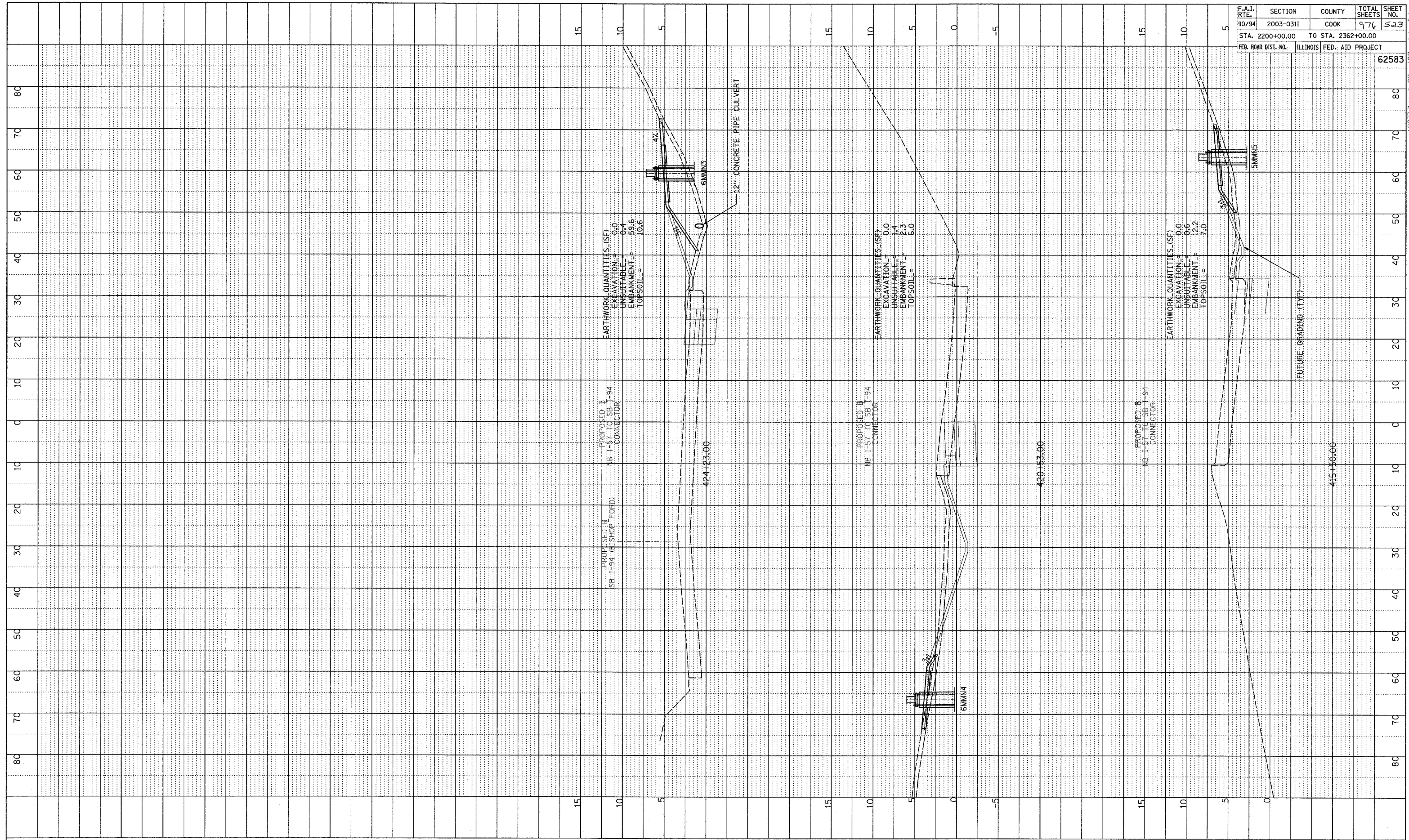
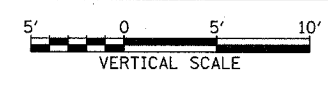
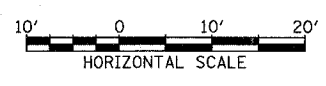


SURVEYED
 GRADES CHECKED
 ELEM. NOTED
 STRUCTURE NOTATIONS OK'D
 NO.

| F.A.I. RTE. | SECTION | COUNTY | TOTAL SHEETS | SHEET NO. |
|---------------------|-----------|--------------------|--------------|-----------|
| 90/94 | 2003-03II | COOK | 976 | 523 |
| STA. 2200+00.00 | | TO STA. 2362+00.00 | | |
| FED. ROAD DIST. NO. | ILLINOIS | FED. AID PROJECT | 62583 | |



TYLIN INTERNATIONAL



NB I-57 TO SB I-94 CONNECTOR
 STA. 415+50 TO STA. 424+23

P:\02373\road\02\p02\ss\rebox_1.dgn