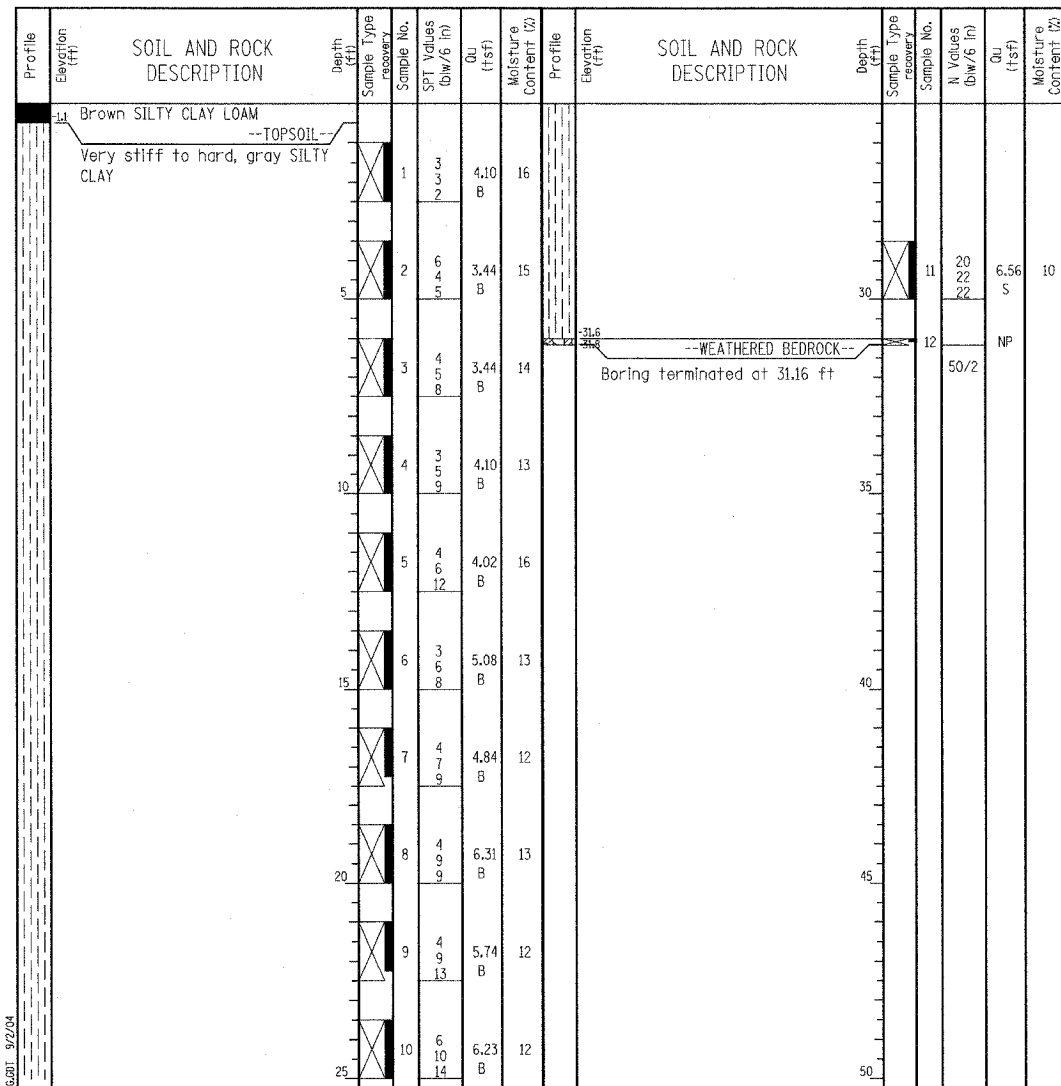


W Wang Engineering, INC.
 Consulting Geotechnical and Environmental Engineers
 wangeng3@wangeng.com
 1145 Main Street
 Lombard, IL 60148
 Telephone: 630 953-9928
 Fax: 630 953-9938

BORING LOG 6RCD1
 WEI Job No.: 414-07-01
 Datum: CCD
 Elevation: -0.62 ft
 North: ft
 East: ft
 Station: 1363+43
 Offset: 111.5' LT

Client: T. Y. LIN International
 Project: Dan Ryan Improvements; IDOT No. D-91-421-01
 Location: From 95th Street to South of 69th Street

Page 1 of 1



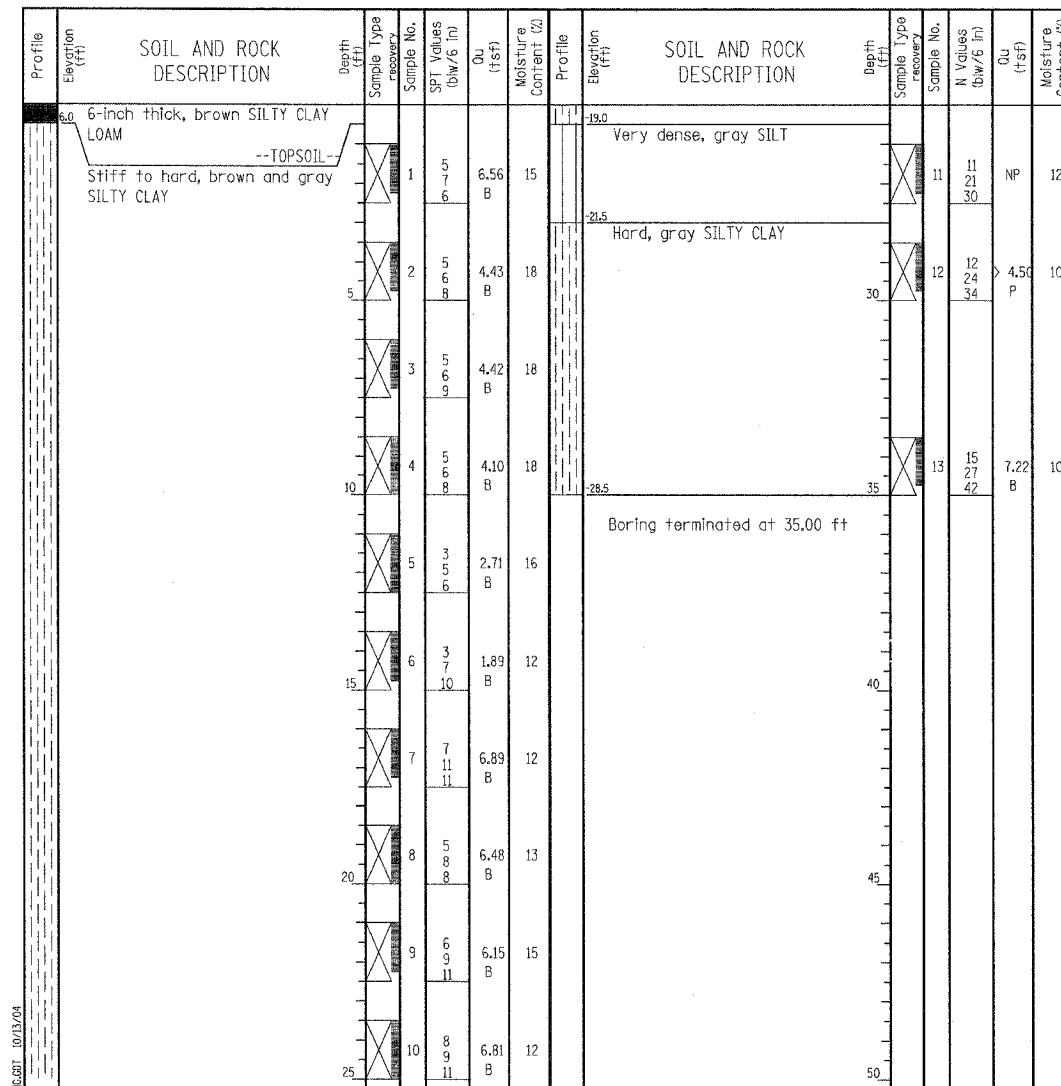
GENERAL NOTES				WATER LEVEL DATA	
Begin Drilling	08-09-2004	Complete Drilling	08-09-2004	While Drilling	▽ DRY
Drilling Contractor	Patrick Drilling	Drill Rig	CME 75 ATV	At Completion of Drilling	▽ DRY
Driller	J&L	Logger	J. Kasnick	Time After Drilling	NA
Drilling Method	3.25" ID. HSA; Boring backfilled with bentonite upon completion				
The stratification lines represent the approximate boundary between soil types; the actual transition may be gradual.					

W Wang Engineering, INC.
 Consulting Geotechnical and Environmental Engineers
 wangeng3@wangeng.com
 1145 Main Street
 Lombard, IL 60148
 Telephone: 630 953-9928
 Fax: 630 953-9938

BORING LOG 5MCD3
 WEI Job No.: 414-07-01
 Datum: CCD
 Elevation: 6.46 ft
 North: 1839043.03 ft
 East: 1180490.89 ft
 Station: 2003+82
 Offset: 64' RT

Client: T. Y. LIN International
 Project: Dan Ryan Improvements; IDOT No. D-91-421-01
 Location: From 95th Street to South of 69th Street

Page 1 of 1



GENERAL NOTES				WATER LEVEL DATA	
Begin Drilling	08-11-2004	Complete Drilling	08-11-2004	While Drilling	▽ DRY
Drilling Contractor	Patrick Drilling	Drill Rig	CME 75 ATV	At Completion of Drilling	▽ DRY
Driller	J&L	Logger	B. Fugiel	Time After Drilling	NA
Drilling Method	3.25" ID. HSA; Boring backfilled with bentonite upon completion				
The stratification lines represent the approximate boundary between soil types; the actual transition may be gradual.					

TYLIN INTERNATIONAL

LEGEND

NP	NON-PLASTIC
B	BULGE FAILURE
S	SHEAR FAILURE
P	POCKET PENETROMETER

REVISIONS	
NAME	DATE

ILLINOIS DEPARTMENT OF TRANSPORTATION
 F.A.I. 90/94 (DAN RYAN EXPRESSWAY)
 31st STREET to I-57
**BORING LOGS FOR HMLT'S
 6 RCD1 & 5 MCD3**

S.N. DESIGNED BY: DJR
 SCALE: N.T.S. DRAWN BY: DJR
 DATE: OCTOBER 29, 2004 CHECKED BY: TD

10/15/2004 01:44:59 PM