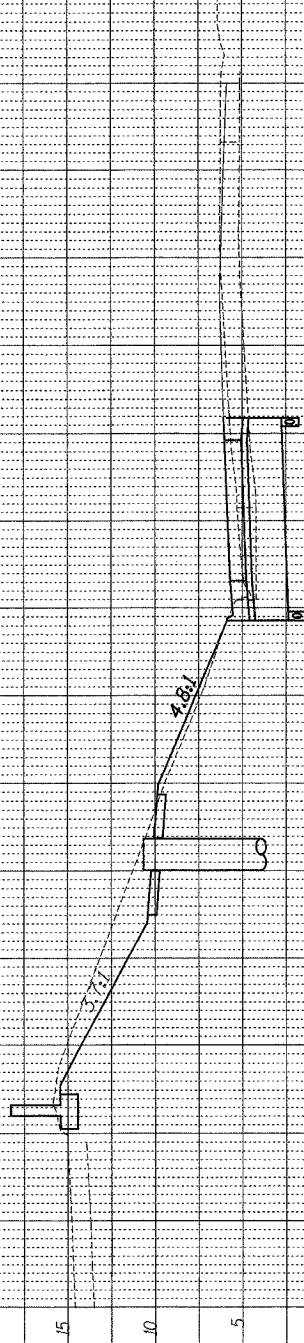


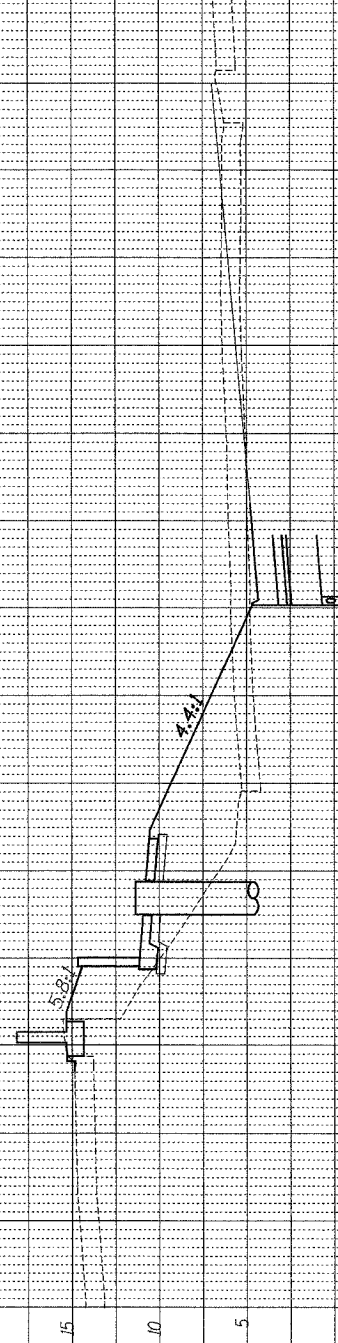
PROFILE SURVEYED BY DATE
 PLAN CHECKED BY
 NOTE BOOK NO. STRUCTURE NOTING CIPRO

FOR INFORMATION ONLY: FINAL 2008 CONDITIONS SHOWN. ALL CROSS SECTIONS ON THIS SHEET BY OTHERS (CONTRACT 62303)

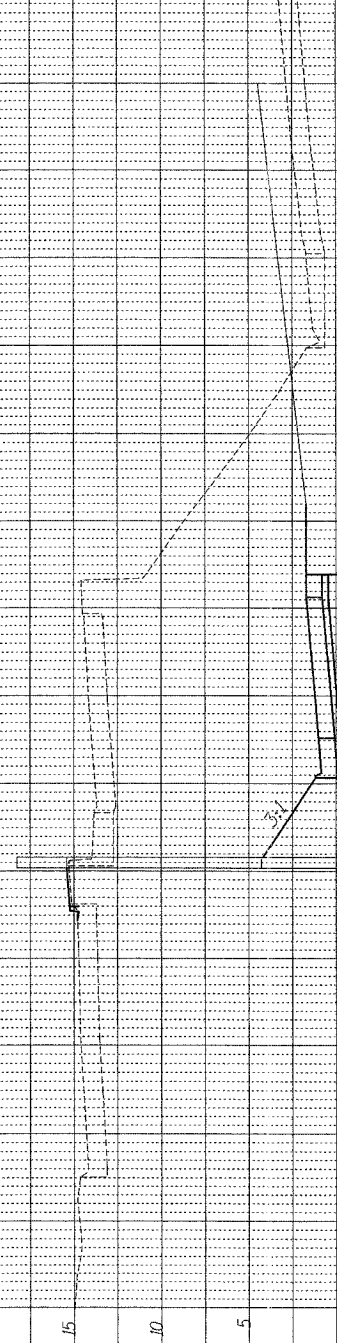
3546+45.0000



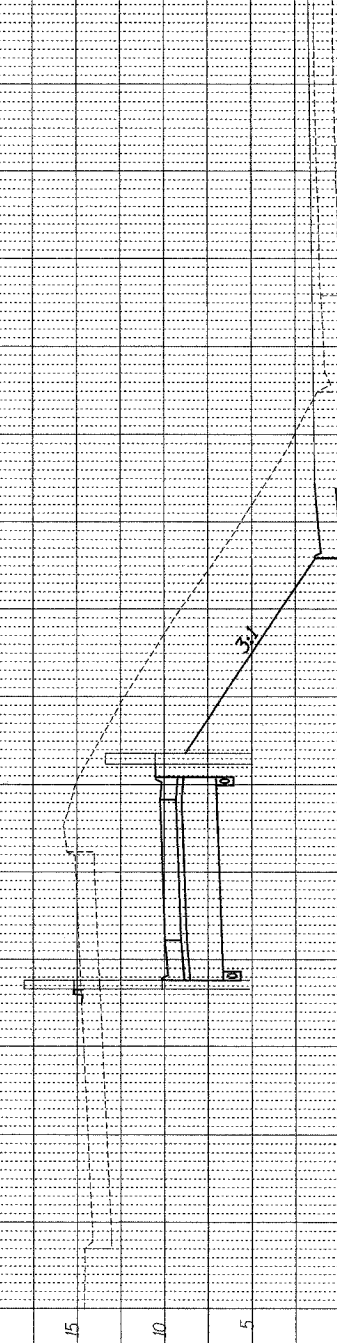
3542+35.0000



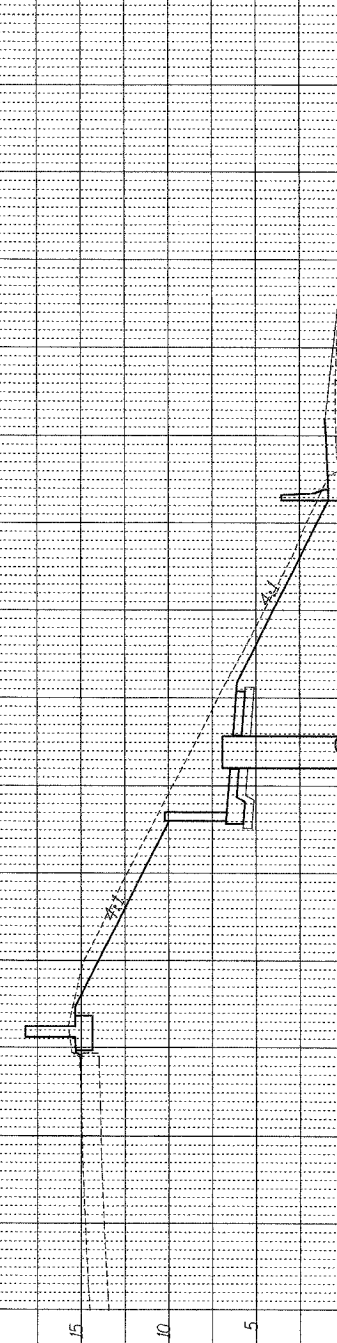
3538+35.0000



3534+30.0000

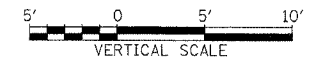


3530+20.0000



F.A.I.	SECTION	COUNTY	TOTAL SHEETS	SHEET NO.
94/90	2003-0311	COOK	976	544
STA. 3530+00.00		TO STA. 3637+00.00		
FED. ROAD DIST. NO.	ILLINOIS	FED. AID PROJECT		
		62583		

BOWMAN, BARRETT & ASSOCIATES INC.
 CONSULTING ENGINEERS
 137 EAST RANDOLPH STREET SUITE 1650 CHICAGO, ILLINOIS 60601
 JOB NO. 644



XS12

10/15/2004 3:05:37 PM

\\1667\proj\03\0311\02\SHEETS\62583.LT\cxsbf\waljgn