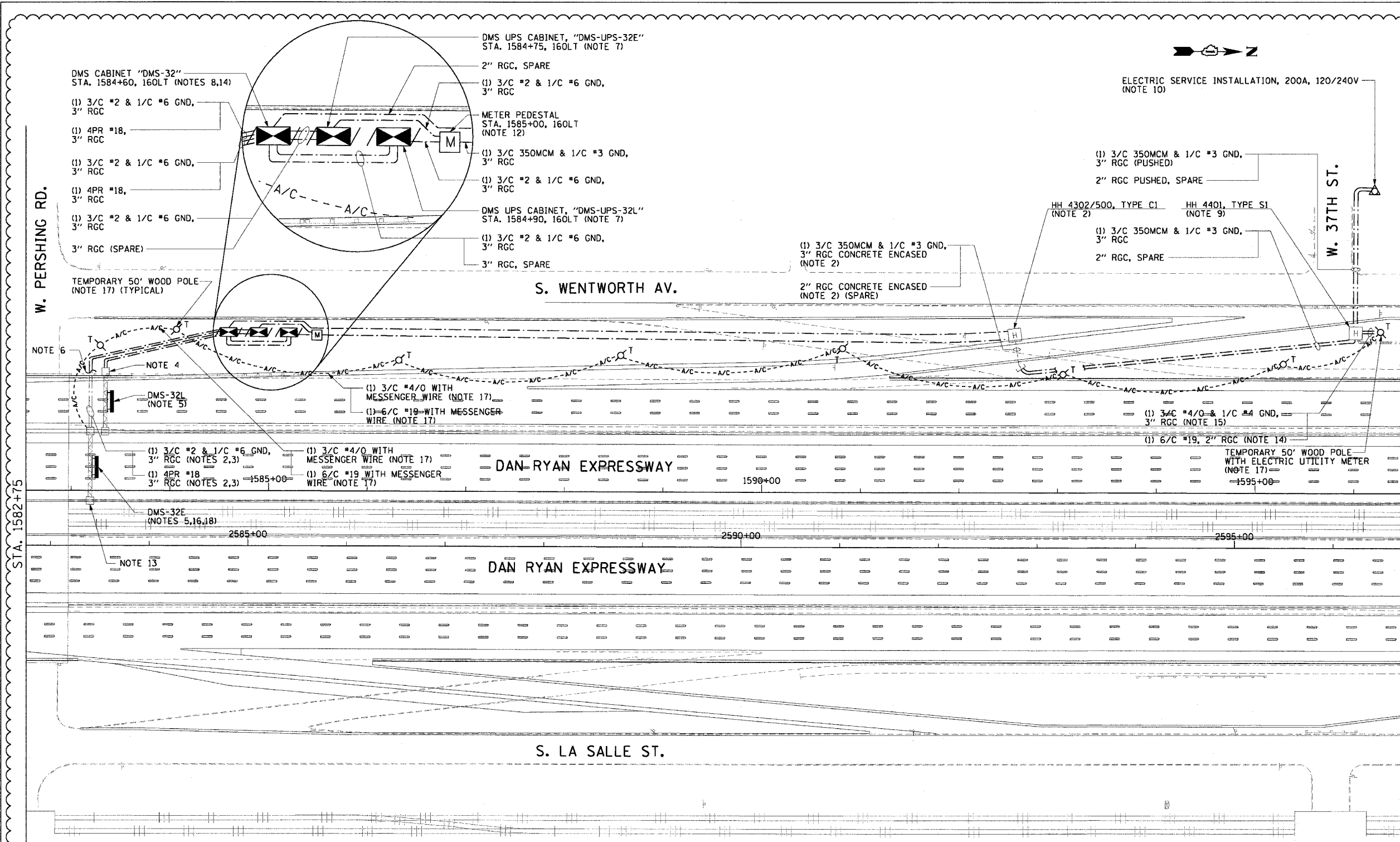


F.A.I. RTE.	SECTION	COUNTY	TOTAL SHEETS	SHEET NO.
90/94	2003-0311	COOK	976	665
STA. 1582+75.00		TO STA. 1596+50.00		
FED. ROAD DIST. NO. 1 ILLINOIS FED. AID PROJECT				

62583

NOTES:

- SEE DRAWINGS ME-01 AND ME-02 FOR ELECTRICAL SYMBOLS AND ABBREVIATIONS.
- NOTED CONDUITS AND HANDHOLES ARE FURNISHED AND INSTALLED BY OTHERS UNDER A SEPARATE CONTRACT. ALL CABLES ARE TO BE FURNISHED AND INSTALLED UNDER THIS CONTRACT.
- SEE DRAWING DT-01 FOR DUCT INSTALLATION DETAILS IN MEDIAN WALL.
- SIGN TRUSS TO BE FURNISHED AND INSTALLED AT STATION NUMBER 1583+50 BY OTHERS IN CONTRACT NUMBER 62303.
- SEE DRAWING DT-04 FOR SIGN INSTALLATION DETAILS.
- CONTRACTOR MUST INTERCEPT CONDUIT STUBS AND MAKE CONNECTIONS TO THE NEW CONDUITS INSTALLED UNDER THIS CONTRACT.
- SEE DRAWING DT-06 FOR UPS EQUIPMENT DETAILS. SEE DRAWINGS DT-36 AND DT-47 FOR CABINET AND FOUNDATION DETAILS.
- SEE DRAWING COMM-43 FOR ADDITIONAL CONDUIT AND FIBER OPTIC CABLE CONNECTIONS TO THE CONTROLLER. SEE DRAWING DT-05 FOR CONTROLLER EQUIPMENT DETAILS. SEE DRAWING DT-36 AND DT-47 FOR CABINET AND FOUNDATION DETAILS.
- HANDHOLE AS SHOWN ON DRAWING DET-44.
- NEW ELECTRIC SERVICE TO BE INSTALLED ON EXISTING UTILITY POLE. CONDUIT UP THE POLE, WEATHERHEAD, AND COILED CABLE TO BE PROVIDED ACCORDING TO UTILITY COMPANY REQUIREMENTS.
- COORDINATE INSTALLATION OF ALL ITEMS SHOWN ON THIS SHEET WITH CONTRACT NUMBERS 62302, 62303, AND 62585.
- NEW METER PEDESTAL TO BE FURNISHED AT APPROXIMATE LOCATION SHOWN ON THIS DRAWING. METER PEDESTAL TO BE LOCATED ON EXPRESSWAY SIDE OF FENCE OR KNEE WALL AND POSITIONED SUCH THAT METER CAN BE READ FROM THE FRONTAGE ROAD. FINAL LOCATION TO BE APPROVED BY THE ENGINEER. SEE DRAWING DT-06A FOR METER PEDESTAL DETAILS.
- SIGN TRUSS TO BE FURNISHED AND INSTALLED AT STATION NUMBER 1583+30 BY OTHERS IN CONTRACT NUMBER 62302.
- TEMPORARY LEASED COMMUNICATION LINE CONNECTION TO BE INSTALLED FOR TEMPORARY COMMUNICATION BETWEEN THE SIGN AND IDOT TRAFFIC SYSTEMS CENTER. UTILIZE SPARE CONDUIT SYSTEM BETWEEN HH4401 AND UTILITY POLE TO INSTALL (1) 6/C #19 TELEPHONE CABLE FOR THIS TEMPORARY CONNECTION. CABLES TO BE REMOVED AFTER PERMANENT INSTALLATION IS COMPLETE.
- POWER CABLES FOR TEMPORARY POWER FEED TO BE (1) 3/C #4/0 & 1/C #4 GND AND INSTALLED IN RACEWAY BETWEEN UTILITY POLE AND METER MOUNTED TO TEMPORARY WOOD POLE. ONCE PERMANENT CABINET INSTALLATION IS COMPLETED, CABLES ARE TO BE PULLED BACK TO UTILITY POLE AND REMOVED. PERMANENT CABLES ARE TO BE INSTALLED WITH SIZES AS INDICATED ON THE PLANS.



ELECTRIC SERVICE INSTALLATION, 200A, 120/240V (NOTE 10)

(1) 3/C 350MCM & 1/C #3 GND, 3" RGC CONCRETE ENCASED (NOTE 2)
2" RGC CONCRETE ENCASED (NOTE 2) (SPARE)

(1) 3/C 350MCM & 1/C #3 GND, 3" RGC (PUSHED)
2" RGC PUSHED, SPARE

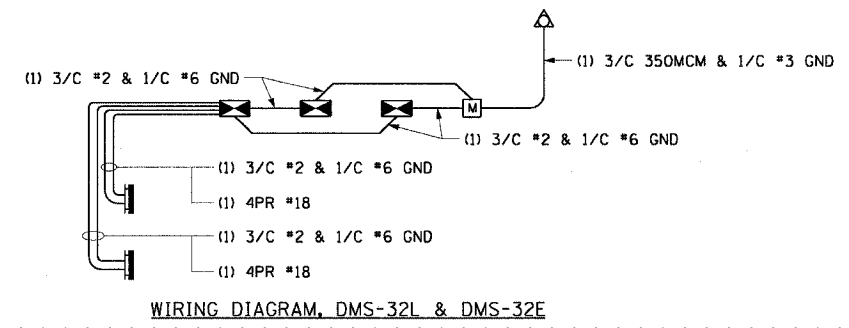
HH 4302/500, TYPE C1 (NOTE 2)

HH 4401, TYPE S1 (NOTE 9)

(1) 3/C 350MCM & 1/C #3 GND, 3" RGC
2" RGC, SPARE

(1) 3/C #4/0 & 1/C #4 GND, 3" RGC (NOTE 15)
(1) 6/C #19, 2" RGC (NOTE 14)

TEMPORARY 50' WOOD POLE WITH ELECTRIC UTILITY METER (NOTE 17)
1595+00



WIRING DIAGRAM, DMS-32L & DMS-32E

NOTES (CONTINUED):

- SIGN CONTROLLER SHALL BE TEMPORARILY MOUNTED INSIDE SIGN HOUSING UNTIL THE PERMANENT CABINETS ARE INSTALLED.
- AERIAL CABLES SHALL BE INSTALLED ON EXISTING TEMPORARY WOOD POLES USED TO FEED HIGH MAST LIGHT TOWERS WHERE POSSIBLE (EXISTING POLES SHOWN ON DRAWINGS RLO5-43 & RLO5-44). THE USE OF ADDITIONAL 50' WOOD POLES SHOULD BE KEPT TO A MINIMUM. AERIAL CABLES AND WOOD POLES TO BE REMOVED ONCE PERMANENT INSTALLATION IS COMPLETE.
- SIGN MAY BE OUT OF SERVICE FOR A MAXIMUM OF 48 HOURS TO FACILITATE CHANGE FROM TEMPORARY TO PERMANENT CONNECTIONS.



REVISIONS	
NAME	DATE
REVISION	2/11/05

ILLINOIS DEPARTMENT OF TRANSPORTATION
F.A.I. 90/94 (DAN RYAN EXPRESSWAY)
31st STREET TO I-57

DYNAMIC MESSAGE SIGN
SB PERSHING RD SITE LAYOUT
SIGNS DMS-32L & DMS-32E

SCALE: 1"=50'
DATE: October 29, 2004
DRAWN BY: HAR
CHECKED BY: BMW

CTE ENGINEERS
CONSOER TOWNSEND ENVIRONMENTAL ENGINEERS, INC.
303 EAST WACKER DRIVE, SUITE 600
CHICAGO ILLINOIS 60601-5212, PHONE: (312) 938-0300

DMS-06

02/10/2005 04:56:24 PM