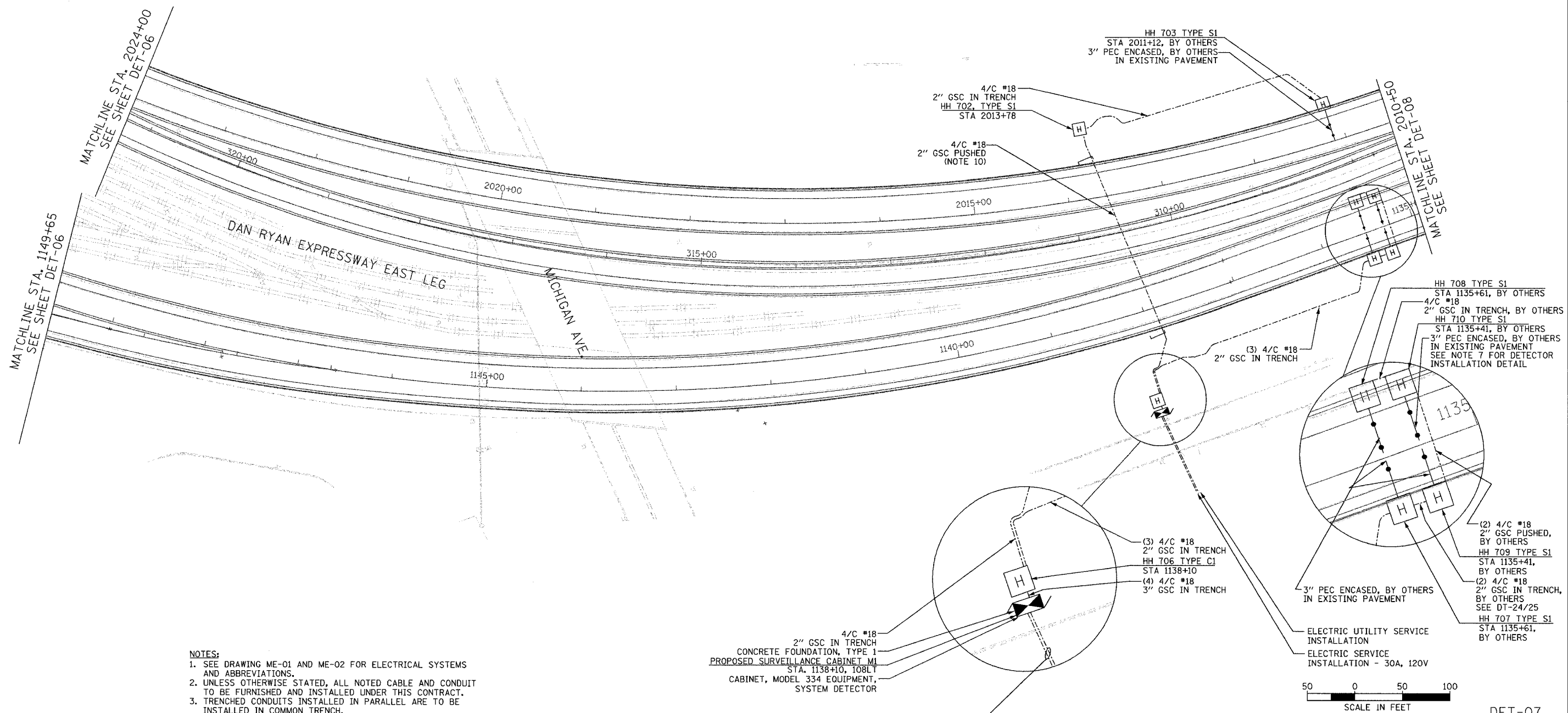


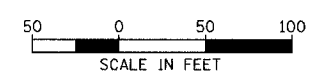
SECTION	COUNTY	TOTAL SHEETS	SHEET NO.
2003-03II	COOK	976	720
STA. 426+00/2024+00 TO STA. 2011+00			
FED. ROAD DIST. NO.	ILLINOIS	FED. AID PROJECT	
62583			



- NOTES:**
1. SEE DRAWING ME-01 AND ME-02 FOR ELECTRICAL SYSTEMS AND ABBREVIATIONS.
 2. UNLESS OTHERWISE STATED, ALL NOTED CABLE AND CONDUIT TO BE FURNISHED AND INSTALLED UNDER THIS CONTRACT.
 3. TRENCHED CONDUITS INSTALLED IN PARALLEL ARE TO BE INSTALLED IN COMMON TRENCH.
 4. THIS SHEET ONLY DEPICTS INSTALLATION OF DETECTION/RAMP METER ELEMENTS. REFER TO SHEETS FOR OTHER SUBSYSTEMS FOR ADDITIONAL ELEMENTS IN THE AREA SHOWN.
 5. CONTRACTOR TO ROD AND CLEAN EXISTING CONDUITS PRIOR TO INSTALLING AND PULLING INNERDUCTS AND CABLES IN CONDUITS.
 6. DETECTION/RAMP METER CONDUIT SHALL NOT BE INSTALLED IN ELECTRIC HANDHOLES (SEE DETAIL SHEET DT-45).
 7. FOR DETECTOR PROBE INSTALLATION DETAILS, SEE SHEETS DT-23 AND DT-28.
 8. FOR HANDHOLE DETAILS, SEE SHEET DT-44 AND DT-46.
 9. FOR WIRING DETAILS, SEE SHEETS DET-48 THROUGH DET-53.
 10. CONDUIT TO BE INSTALLED AT A DEPTH OF 66" BELOW EXISTING PAVEMENT GRADE.

4/C #18
2" GSC IN TRENCH
CONCRETE FOUNDATION, TYPE 1
PROPOSED SURVEILLANCE CABINET M1
STA. 1138+10, 108LT
CABINET, MODEL 334 EQUIPMENT,
SYSTEM DETECTOR

2/C #2, 1/C #6 GND
2" GSC PUSHED
2" GSC PUSHED (SPARE)



REVISIONS	
NAME	DATE

ILLINOIS DEPARTMENT OF TRANSPORTATION
F.A.I. 94/90 (DAN RYAN EXPRESSWAY)
31st STREET TO I-57
SURVEILLANCE SYSTEM STATION
DETECTOR SYSTEM
MICHIGAN ST. SITE LAYOUT
DET-03, DET-04

SCALE: 1"=50'
DATE: October 29, 2004

DRAWN BY: CJH
CHECKED BY: MJL

**Edwards
AND
Kelcey**

ONE NORTH FRANKLIN
CHICAGO, IL 60606
PHONE: (312) 251-3000
FAX: (312) 251-3015
WEB: WWW.EKCORP.COM

11/22/2004 04:51:05 PM