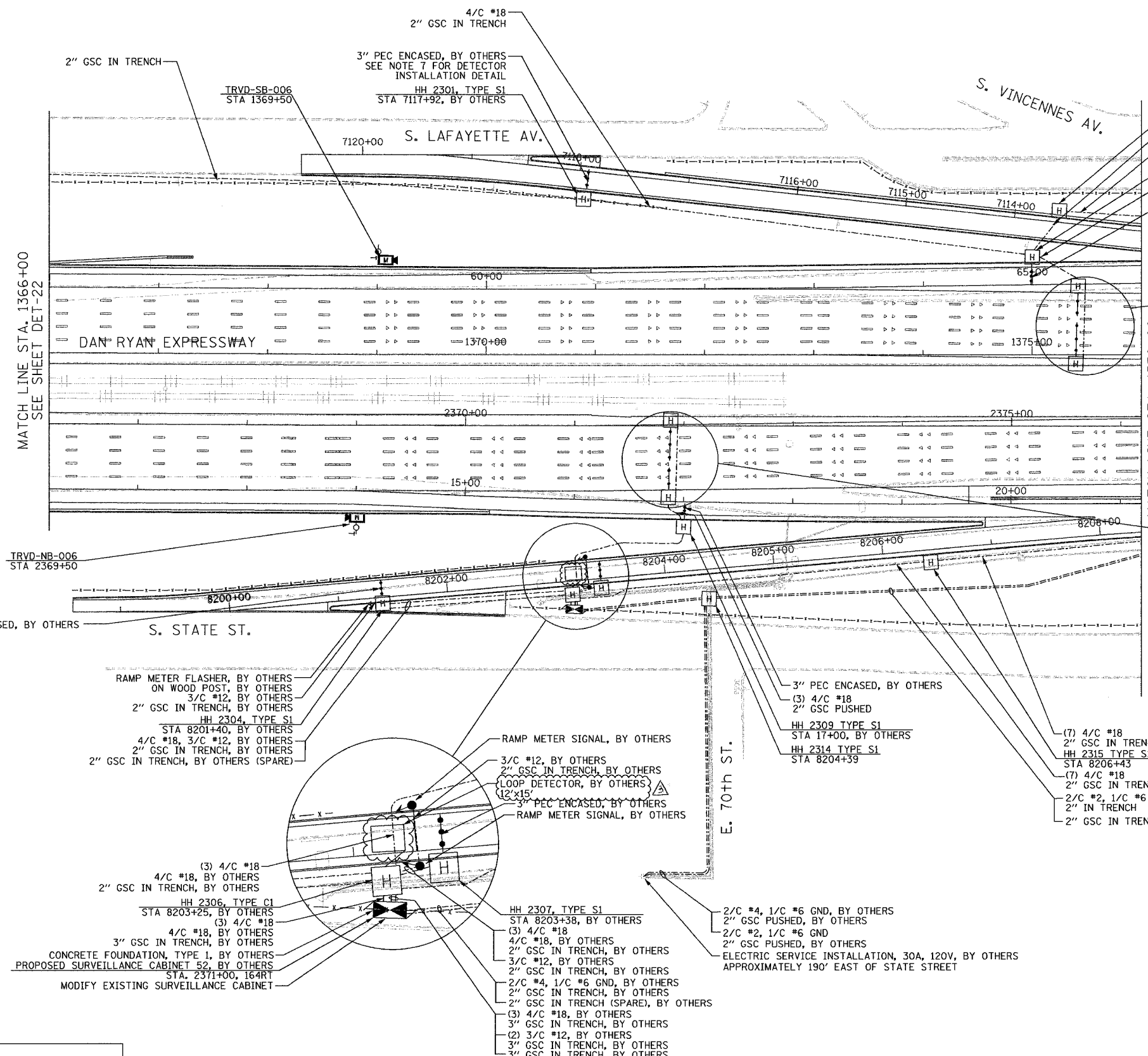
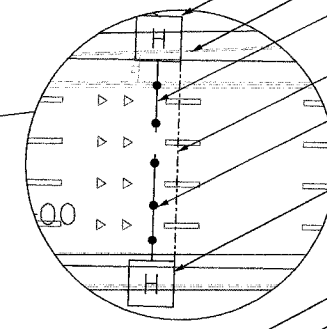


SECTION	COUNTY	TOTAL SHEETS	SHEET NO.
2003-031I	COOK	976	736
STA. 1366+00 TO STA. 1376+00			
FED. ROAD DIST. NO.	ILLINOIS	FED. AID PROJECT	
62583			

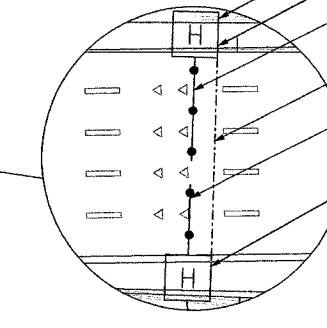


- HH 2303, TYPE S1
- STA 7113+60, BY OTHERS
- (5) 4/C #18
- 2" GSC IN TRENCH, BY OTHERS
- (5) 4/C #18
- 2" GSC IN TRENCH
- HH 2302, TYPE S1
- STA 65+00, BY OTHERS
- (3) 4/C #18
- 2" GSC IN TRENCH, BY OTHERS
- 3" PEC ENCASED, BY OTHERS
- SEE NOTE 7 FOR DETECTOR INSTALLATION DETAIL

- COIL 175' OF DETECTOR CABLE
- HH 2311, TYPE S1
- STA 1375+43, BY OTHERS
- 3" PEC ENCASED, BY OTHERS
- SEE NOTE 7 FOR DETECTOR INSTALLATION DETAIL
- (2) 4/C #18
- 2" GSC IN TRENCH, BY OTHERS
- 3" PEC ENCASED, BY OTHERS
- SEE NOTE 7 FOR DETECTOR INSTALLATION DETAIL
- HH 2312, TYPE S1
- STA 1375+40, BY OTHERS

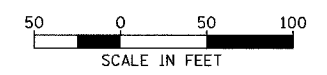


- COIL 175' OF DETECTOR CABLE
- HH 2313, TYPE S1
- STA 2371+87, BY OTHERS
- 3" PEC ENCASED, BY OTHERS
- SEE NOTE 7 FOR DETECTOR INSTALLATION DETAIL
- (2) 4/C #18
- 2" GSC IN TRENCH, BY OTHERS
- 3" PEC ENCASED, BY OTHERS
- SEE NOTE 7 FOR DETECTOR INSTALLATION DETAIL
- HH 2308, TYPE S1
- STA 16+85, BY OTHERS



NOTES:

1. SEE DRAWING ME-01 AND ME-02 FOR ELECTRICAL SYSTEMS AND ABBREVIATIONS.
2. UNLESS OTHERWISE STATED, ALL NOTED CABLE AND CONDUIT TO BE FURNISHED AND INSTALLED UNDER THIS CONTRACT.
3. TRENCHED CONDUITS INSTALLED IN PARALLEL ARE TO BE INSTALLED IN COMMON TRENCH.
4. THIS SHEET ONLY DEPICTS INSTALLATION OF DETECTION/RAMP METER ELEMENTS. REFER TO SHEETS FOR OTHER SUBSYSTEMS FOR ADDITIONAL ELEMENTS IN THE AREA SHOWN.
5. CONTRACTOR TO ROD AND CLEAN EXISTING CONDUITS PRIOR TO INSTALLING AND PULLING INNERDUCTS AND CABLES IN CONDUITS.
6. DETECTION/RAMP METER CONDUIT SHALL NOT BE INSTALLED IN ELECTRIC HANDHOLES (SEE DETAIL SHEET DT-45).
7. FOR DETECTOR PROBE INSTALLATION DETAILS, SEE SHEETS DT-23 AND DT-28.
8. FOR HANDHOLE DETAILS, SEE SHEET DT-44 AND DT-46.
9. FOR WIRING DETAILS, SEE SHEETS DET-48 THROUGH DET-53



DET-23

REVISIONS		
NAME	DATE	
REVISION	2/11/05	

ILLINOIS DEPARTMENT OF TRANSPORTATION
 F.A.I. 94/90 (DAN RYAN EXPRESSWAY)
 31st STREET TO I-57
 SURVEILLANCE SYSTEM STATION
 RAMP METERING AND DETECTOR SYSTEM
 71ST ST. SITE LAYOUT
 DET-25, DET-26, RM-11

SCALE: 1"=50'
 DATE: October 29, 2004

DRAWN BY: CJH
 CHECKED BY: MJL

**Edwards
 AND Kelcey**

ONE NORTH FRANKLIN
 CHICAGO, IL 60606
 PHONE: (312) 251-3000
 FAX: (312) 251-3015
 WEB: WWW.EKCORP.COM

P:\030009\0305\15\road\62583\det23.dwg 10/29/2004 10:50:37 AM