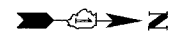
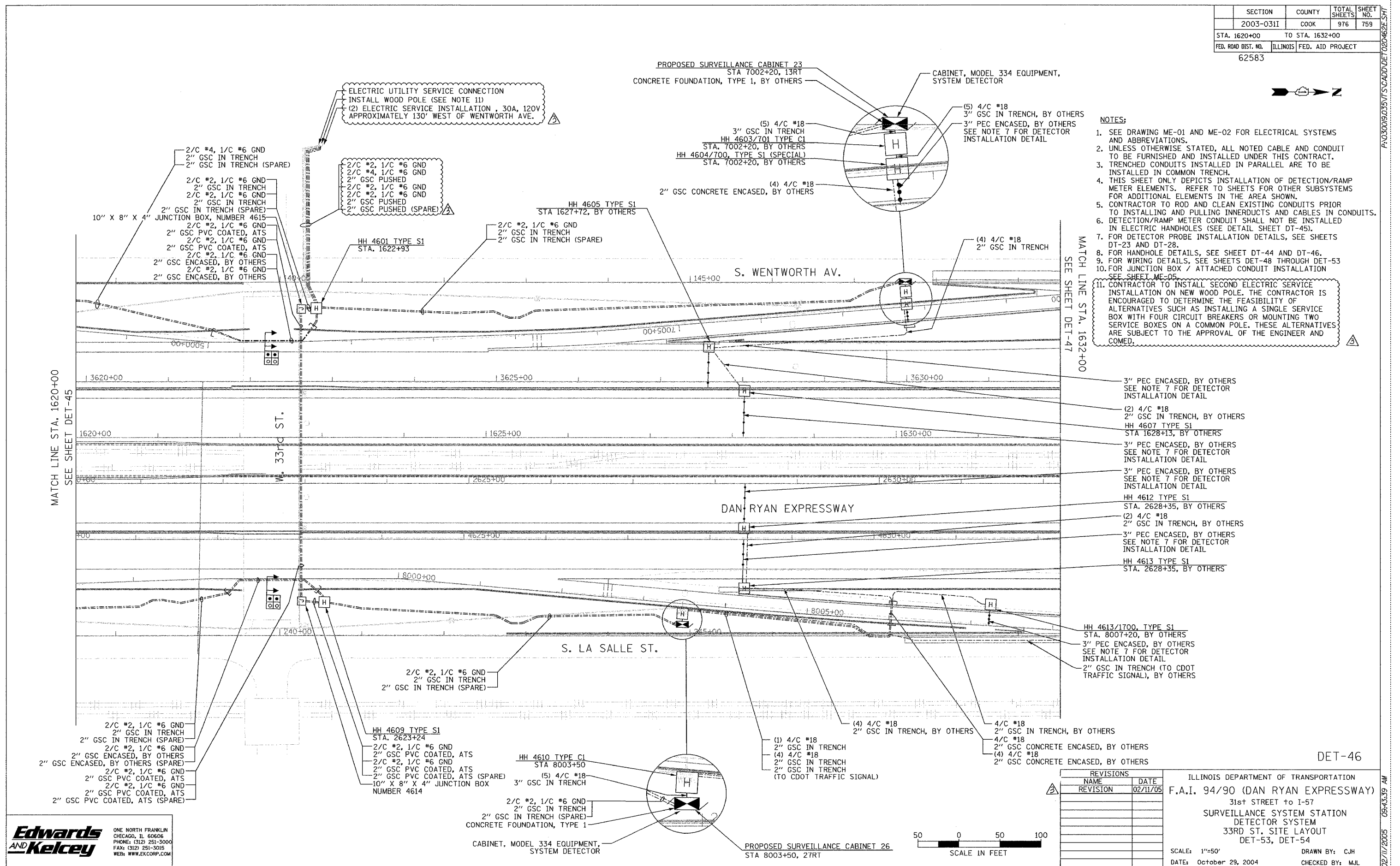


SECTION	COUNTY	TOTAL SHEETS	SHEET NO.
2003-0311	COOK	976	759
STA. 1620+00 TO STA. 1632+00			
FED. ROAD DIST. NO. ILLINOIS FED. AID PROJECT		62583	



- NOTES:**
- SEE DRAWING ME-01 AND ME-02 FOR ELECTRICAL SYSTEMS AND ABBREVIATIONS.
 - UNLESS OTHERWISE STATED, ALL NOTED CABLE AND CONDUIT TO BE FURNISHED AND INSTALLED UNDER THIS CONTRACT.
 - TRENCHED CONDUITS INSTALLED IN PARALLEL ARE TO BE INSTALLED IN COMMON TRENCH.
 - THIS SHEET ONLY DEPICTS INSTALLATION OF DETECTION/RAMP METER ELEMENTS. REFER TO SHEETS FOR OTHER SUBSYSTEMS FOR ADDITIONAL ELEMENTS IN THE AREA SHOWN.
 - CONTRACTOR TO ROD AND CLEAN EXISTING CONDUITS PRIOR TO INSTALLING AND PULLING INNERDUCTS AND CABLES IN CONDUITS.
 - DETECTION/RAMP METER CONDUIT SHALL NOT BE INSTALLED IN ELECTRIC HANDHOLES (SEE DETAIL SHEET DT-45).
 - FOR DETECTOR PROBE INSTALLATION DETAILS, SEE SHEETS DT-23 AND DT-28.
 - FOR HANDHOLE DETAILS, SEE SHEET DT-44 AND DT-46.
 - FOR WIRING DETAILS, SEE SHEETS DET-48 THROUGH DET-53.
 - FOR JUNCTION BOX / ATTACHED CONDUIT INSTALLATION SEE SHEET ME-05.
 - CONTRACTOR TO INSTALL SECOND ELECTRIC SERVICE INSTALLATION ON NEW WOOD POLE. THE CONTRACTOR IS ENCOURAGED TO DETERMINE THE FEASIBILITY OF ALTERNATIVES SUCH AS INSTALLING A SINGLE SERVICE BOX WITH FOUR CIRCUIT BREAKERS OR MOUNTING TWO SERVICE BOXES ON A COMMON POLE. THESE ALTERNATIVES ARE SUBJECT TO THE APPROVAL OF THE ENGINEER AND COMED.



MATCH LINE STA. 1632+00
SEE SHEET DET-47

MATCH LINE STA. 1620+00
SEE SHEET DET-45

- 3" PEC ENCASED, BY OTHERS
SEE NOTE 7 FOR DETECTOR
INSTALLATION DETAIL
- (2) 4/C #18
2" GSC IN TRENCH, BY OTHERS
- HH 4607 TYPE S1
STA 1628+13, BY OTHERS
- 3" PEC ENCASED, BY OTHERS
SEE NOTE 7 FOR DETECTOR
INSTALLATION DETAIL
- 3" PEC ENCASED, BY OTHERS
SEE NOTE 7 FOR DETECTOR
INSTALLATION DETAIL
- HH 4612 TYPE S1
STA. 2628+35, BY OTHERS
- (2) 4/C #18
2" GSC IN TRENCH, BY OTHERS
- 3" PEC ENCASED, BY OTHERS
SEE NOTE 7 FOR DETECTOR
INSTALLATION DETAIL
- HH 4613 TYPE S1
STA. 2628+35, BY OTHERS

- HH 4613/1700, TYPE S1
STA. 8007+20, BY OTHERS
- 3" PEC ENCASED, BY OTHERS
SEE NOTE 7 FOR DETECTOR
INSTALLATION DETAIL
- 2" GSC IN TRENCH (TO CDOT
TRAFFIC SIGNAL), BY OTHERS

- 2/C #2, 1/C #6 GND
2" GSC IN TRENCH
2" GSC IN TRENCH (SPARE)
- 2/C #2, 1/C #6 GND
2" GSC ENCASED, BY OTHERS
2" GSC ENCASED, BY OTHERS (SPARE)
- 2" GSC PVC COATED, ATS
2/C #2, 1/C #6 GND
2" GSC PVC COATED, ATS (SPARE)
- 2" GSC PVC COATED, ATS
2/C #2, 1/C #6 GND
2" GSC PVC COATED, ATS (SPARE)
- 2" GSC PVC COATED, ATS (SPARE)
- HH 4609 TYPE S1
STA. 2623+24
- 2/C #2, 1/C #6 GND
2" GSC PVC COATED, ATS
- 2/C #2, 1/C #6 GND
2" GSC PVC COATED, ATS
- 2" GSC PVC COATED, ATS (SPARE)
- 10" X 8" X 4" JUNCTION BOX
NUMBER 4614

- HH 4610 TYPE C1
STA 8003+50
- (5) 4/C #18
3" GSC IN TRENCH
- 2/C #2, 1/C #6 GND
2" GSC IN TRENCH
2" GSC IN TRENCH (SPARE)
- CONCRETE FOUNDATION, TYPE 1
- CABINET, MODEL 334 EQUIPMENT,
SYSTEM DETECTOR
- PROPOSED SURVEILLANCE CABINET 26
STA 8003+50, 27RT
- (1) 4/C #18
2" GSC IN TRENCH
- (4) 4/C #18
2" GSC IN TRENCH
2" GSC IN TRENCH
(TO CDOT TRAFFIC SIGNAL)
- (4) 4/C #18
2" GSC IN TRENCH, BY OTHERS
- 4/C #18
2" GSC IN TRENCH, BY OTHERS
- 4/C #18
2" GSC CONCRETE ENCASED, BY OTHERS
- (4) 4/C #18
2" GSC CONCRETE ENCASED, BY OTHERS



REVISIONS	
NAME	DATE
REVISION	02/11/05

ILLINOIS DEPARTMENT OF TRANSPORTATION
 F.A.I. 94/90 (DAN RYAN EXPRESSWAY)
 31st STREET to I-57
 SURVEILLANCE SYSTEM STATION
 DETECTOR SYSTEM
 33RD ST. SITE LAYOUT
 DET-53, DET-54

SCALE: 1"=50'
 DATE: October 29, 2004

DRAWN BY: CJH
 CHECKED BY: MJL

**Edwards
AND Kelcey**

ONE NORTH FRANKLIN
 CHICAGO, IL 60606
 PHONE: (312) 251-3000
 FAX: (312) 251-3015
 WEB: WWW.EKCORP.COM

09-43-39 AM 02/11/2005 P:\030009\035\VT S\CADD\DET-46\DET-46.DWG