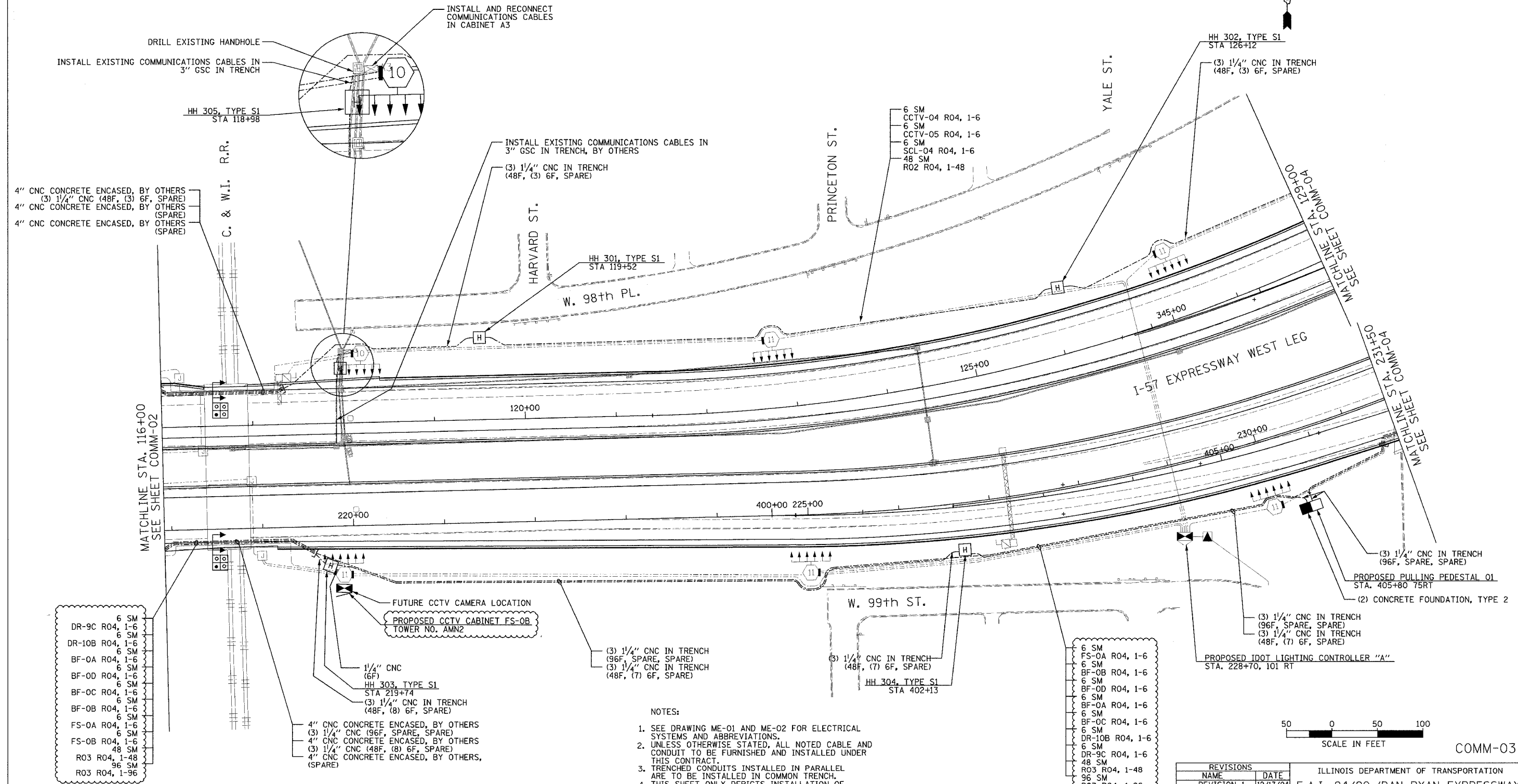


SECTION	COUNTY	TOTAL SHEETS	SHEET NO.
2003-031I	COOK	976	769
STA. 116+00.00	TO STA. 129+00/231+50		
FED. ROAD DIST. NO.	ILLINOIS FED. AID PROJECT		
62583			



4" CNC CONCRETE ENCASED, BY OTHERS  
 (3) 1/4" CNC (48F, (3) 6F, SPARE)  
 4" CNC CONCRETE ENCASED, BY OTHERS (SPARE)  
 4" CNC CONCRETE ENCASED, BY OTHERS (SPARE)

C. & W.I. R.R.

6 SM  
 CCTV-04 R04, 1-6  
 6 SM  
 CCTV-05 R04, 1-6  
 6 SM  
 SCL-04 R04, 1-6  
 48 SM  
 R02 R04, 1-48

DR-9C R04, 1-6  
 DR-10B R04, 1-6  
 BF-0A R04, 1-6  
 BF-0D R04, 1-6  
 BF-0C R04, 1-6  
 BF-0B R04, 1-6  
 FS-0A R04, 1-6  
 FS-0B R04, 1-6  
 R03 R04, 1-48  
 96 SM  
 R03 R04, 1-96

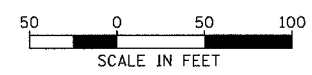
4" CNC CONCRETE ENCASED, BY OTHERS  
 (3) 1/4" CNC (96F, SPARE, SPARE)  
 4" CNC CONCRETE ENCASED, BY OTHERS  
 (3) 1/4" CNC (48F, (8) 6F, SPARE)  
 4" CNC CONCRETE ENCASED, BY OTHERS, (SPARE)

(3) 1/4" CNC IN TRENCH (96F, SPARE, SPARE)  
 (3) 1/4" CNC IN TRENCH (48F, (7) 6F, SPARE)

(3) 1/4" CNC IN TRENCH (48F, (7) 6F, SPARE)  
 HH 304, TYPE S1  
 STA 402+13

6 SM  
 FS-0A R04, 1-6  
 6 SM  
 BF-0B R04, 1-6  
 6 SM  
 BF-0D R04, 1-6  
 6 SM  
 BF-0A R04, 1-6  
 6 SM  
 DR-10B R04, 1-6  
 6 SM  
 DR-9C R04, 1-6  
 48 SM  
 R03 R04, 1-48  
 96 SM  
 R03 R04, 1-96

(3) 1/4" CNC IN TRENCH (96F, SPARE, SPARE)  
 (3) 1/4" CNC IN TRENCH (48F, (7) 6F, SPARE)



- NOTES:
- SEE DRAWING ME-01 AND ME-02 FOR ELECTRICAL SYSTEMS AND ABBREVIATIONS.
  - UNLESS OTHERWISE STATED, ALL NOTED CABLE AND CONDUIT TO BE FURNISHED AND INSTALLED UNDER THIS CONTRACT.
  - TRENCHED CONDUITS INSTALLED IN PARALLEL ARE TO BE INSTALLED IN COMMON TRENCH.
  - THIS SHEET ONLY DEPICTS INSTALLATION OF COMMUNICATIONS ELEMENTS. REFER TO SHEETS FOR OTHER SUBSYSTEMS FOR ADDITIONAL ELEMENTS IN THE AREA SHOWN.
  - CONTRACTOR TO ROD AND CLEAN EXISTING CONDUITS PRIOR TO INSTALLING AND PULLING INNERDUCTS AND CABLES IN CONDUITS.
  - COMMUNICATIONS CONDUIT SHALL NOT BE INSTALLED IN ELECTRIC HANDHOLES (SEE DETAIL SHEET DT-45).
  - FOR HANDHOLE DETAILS, SEE SHEET DT-44 AND DT-46.

REVISIONS	
NAME	DATE
REVISION 1	12/17/04

ILLINOIS DEPARTMENT OF TRANSPORTATION  
 F.A.I. 94/90 (DAN RYAN EXPRESSWAY)  
 31st STREET TO I-57  
 COMMUNICATIONS BACKBONE CONDUIT  
 AND CABLE LAYOUT  
 SCALE: 1"=50'  
 DATE: October 29, 2004  
 DRAWN BY: YAD  
 CHECKED BY: JEZ

**Edwards AND Kelcey**  
 ONE NORTH FRANKLIN  
 CHICAGO, IL 60606  
 PHONE: (312) 251-3000  
 FAX: (312) 251-3015  
 WEB: WWW.EDKORP.COM

12/15/2004 01:46:59 PM P:\03009\03035\15\road\comm\2003\2003-031I