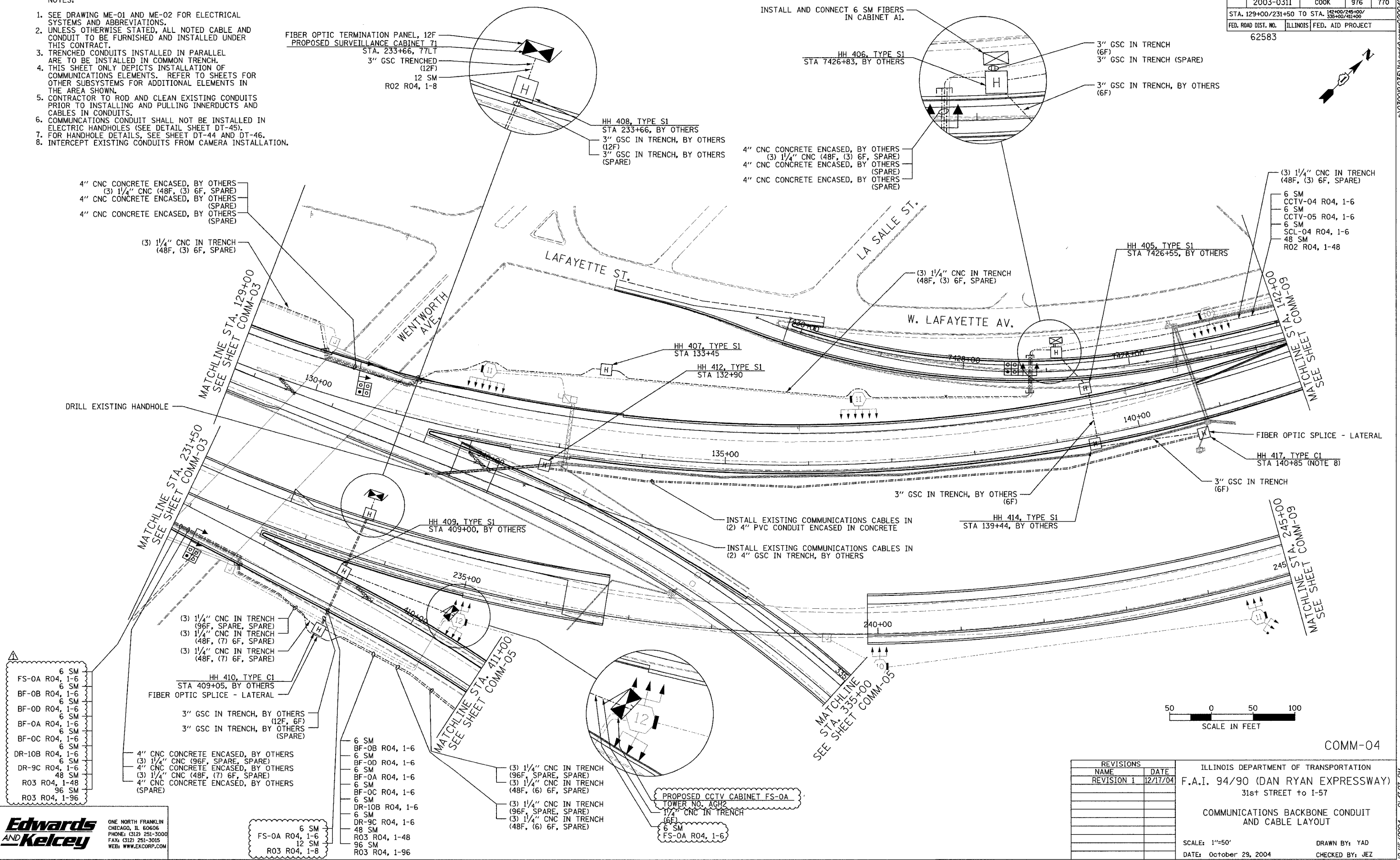


SECTION	COUNTY	TOTAL SHEETS	SHEET NO.
2003-0311	COOK	976	770
STA. 129+00/231+50 TO STA. 142+00/245+00/ 336+00/411+00			
FED. ROAD DIST. NO.	ILLINOIS FED. AID PROJECT		
	62583		

- NOTES:
- SEE DRAWING ME-01 AND ME-02 FOR ELECTRICAL SYSTEMS AND ABBREVIATIONS.
 - UNLESS OTHERWISE STATED, ALL NOTED CABLE AND CONDUIT TO BE FURNISHED AND INSTALLED UNDER THIS CONTRACT.
 - TRENCHED CONDUITS INSTALLED IN PARALLEL ARE TO BE INSTALLED IN COMMON TRENCH.
 - THIS SHEET ONLY DEPICTS INSTALLATION OF COMMUNICATIONS ELEMENTS. REFER TO SHEETS FOR OTHER SUBSYSTEMS FOR ADDITIONAL ELEMENTS IN THE AREA SHOWN.
 - CONTRACTOR TO ROD AND CLEAN EXISTING CONDUITS PRIOR TO INSTALLING AND PULLING INNERDUCTS AND CABLES IN CONDUITS.
 - COMMUNICATIONS CONDUIT SHALL NOT BE INSTALLED IN ELECTRIC HANDHOLES (SEE DETAIL SHEET DT-45).
 - FOR HANDHOLE DETAILS, SEE SHEET DT-44 AND DT-46.
 - INTERCEPT EXISTING CONDUITS FROM CAMERA INSTALLATION.



4" CNC CONCRETE ENCASED, BY OTHERS
(3) 1/4" CNC (48F, (3) 6F, SPARE)
4" CNC CONCRETE ENCASED, BY OTHERS (SPARE)
4" CNC CONCRETE ENCASED, BY OTHERS (SPARE)

4" CNC CONCRETE ENCASED, BY OTHERS
(3) 1/4" CNC (48F, (3) 6F, SPARE)
4" CNC CONCRETE ENCASED, BY OTHERS (SPARE)
4" CNC CONCRETE ENCASED, BY OTHERS (SPARE)

(3) 1/4" CNC IN TRENCH (48F, (3) 6F, SPARE)
6 SM CCTV-04 R04, 1-6
6 SM CCTV-05 R04, 1-6
6 SM SCL-04 R04, 1-6
48 SM R02 R04, 1-48

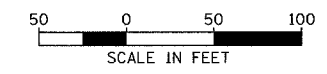
(3) 1/4" CNC IN TRENCH (96F, SPARE, SPARE)
(3) 1/4" CNC IN TRENCH (48F, (7) 6F, SPARE)
(3) 1/4" CNC IN TRENCH (48F, (7) 6F, SPARE)

(3) 1/4" CNC IN TRENCH (96F, SPARE, SPARE)
(3) 1/4" CNC IN TRENCH (48F, (6) 6F, SPARE)
(3) 1/4" CNC IN TRENCH (96F, SPARE, SPARE)
(3) 1/4" CNC IN TRENCH (48F, (6) 6F, SPARE)

FS-0A R04, 1-6	6 SM
BF-0B R04, 1-6	6 SM
BF-0D R04, 1-6	6 SM
BF-0A R04, 1-6	6 SM
BF-0C R04, 1-6	6 SM
DR-10B R04, 1-6	6 SM
DR-9C R04, 1-6	6 SM
R03 R04, 1-48	48 SM
R03 R04, 1-96	96 SM

FS-0A R04, 1-6	6 SM
R03 R04, 1-8	12 SM
R03 R04, 1-8	96 SM

BF-0B R04, 1-6	6 SM
BF-0D R04, 1-6	6 SM
BF-0A R04, 1-6	6 SM
BF-0C R04, 1-6	6 SM
DR-10B R04, 1-6	6 SM
DR-9C R04, 1-6	6 SM
R03 R04, 1-48	48 SM
R03 R04, 1-96	96 SM



COMM-04

REVISIONS	
NAME	DATE
REVISION 1	12/17/04

ILLINOIS DEPARTMENT OF TRANSPORTATION
F.A.I. 94/90 (DAN RYAN EXPRESSWAY)
31st STREET TO I-57

COMMUNICATIONS BACKBONE CONDUIT AND CABLE LAYOUT

SCALE: 1"=50'
DATE: October 29, 2004

DRAWN BY: YAD
CHECKED BY: JEZ

Edwards AND Kelcey
ONE NORTH FRANKLIN
CHICAGO, IL 60606
PHONE: (312) 251-3000
FAX: (312) 251-3015
WEB: WWW.EDKORP.COM

12/15/2004 01:47:07 PM