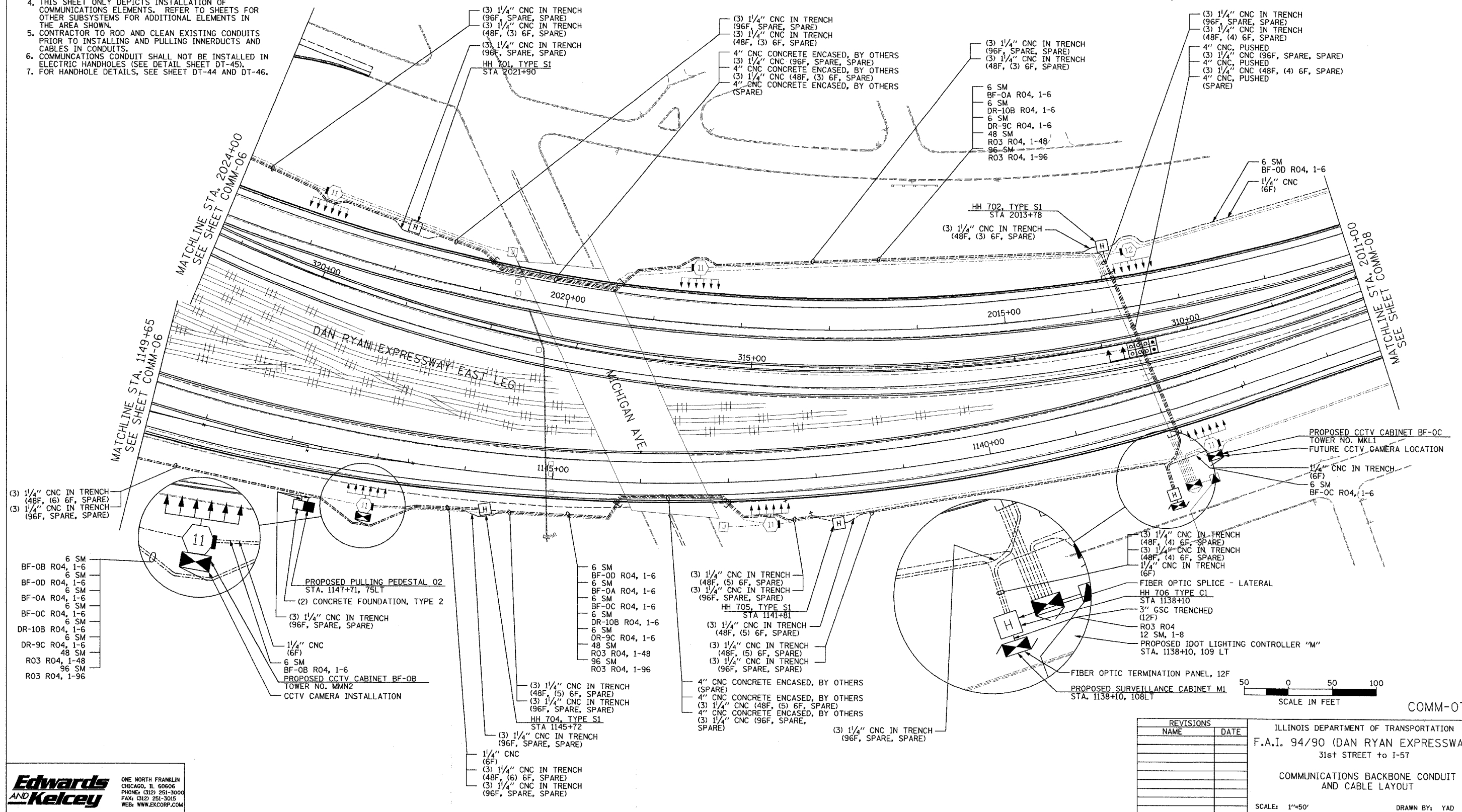


SECTION	COUNTY	TOTAL SHEETS	SHEET NO.
2003-0311	COOK	976	773
STA. 426+00/2024+00 TO STA. 2011+00			
FED. ROAD DIST. NO.	ILLINOIS	FED. AID PROJECT	
62583			

- NOTES:
- SEE DRAWING ME-01 AND ME-02 FOR ELECTRICAL SYSTEMS AND ABBREVIATIONS.
 - UNLESS OTHERWISE STATED, ALL NOTED CABLE AND CONDUIT TO BE FURNISHED AND INSTALLED UNDER THIS CONTRACT.
 - TRENCHED CONDUITS INSTALLED IN PARALLEL ARE TO BE INSTALLED IN COMMON TRENCH.
 - THIS SHEET ONLY DEPICTS INSTALLATION OF COMMUNICATIONS ELEMENTS. REFER TO SHEETS FOR OTHER SUBSYSTEMS FOR ADDITIONAL ELEMENTS IN THE AREA SHOWN.
 - CONTRACTOR TO ROD AND CLEAN EXISTING CONDUITS PRIOR TO INSTALLING AND PULLING INNERDUCTS AND CABLES IN CONDUITS.
 - COMMUNICATIONS CONDUIT SHALL NOT BE INSTALLED IN ELECTRIC HANDHOLES (SEE DETAIL SHEET DT-45).
 - FOR HANDHOLE DETAILS, SEE SHEET DT-44 AND DT-46.



- (3) 1 1/4" CNC IN TRENCH (48F, (6) 6F, SPARE)
- (3) 1 1/4" CNC IN TRENCH (96F, SPARE, SPARE)
- 6 SM BF-0B R04, 1-6
- 6 SM BF-0D R04, 1-6
- 6 SM BF-0A R04, 1-6
- 6 SM BF-0C R04, 1-6
- 6 SM DR-10B R04, 1-6
- 6 SM DR-9C R04, 1-6
- 48 SM R03 R04, 1-48
- 96 SM R03 R04, 1-96

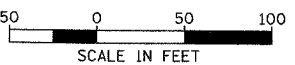
- PROPOSED PULLING PEDESTAL O2 STA. 1147+71, 75LT
- (2) CONCRETE FOUNDATION, TYPE 2
- (3) 1 1/4" CNC IN TRENCH (96F, SPARE, SPARE)
- 1/4" CNC (6F)
- 6 SM BF-0B R04, 1-6
- PROPOSED CCTV CABINET BF-0B TOWER NO. MMN2
- CCTV CAMERA INSTALLATION

- 6 SM BF-0D R04, 1-6
- 6 SM BF-0A R04, 1-6
- 6 SM BF-0C R04, 1-6
- 6 SM DR-10B R04, 1-6
- 6 SM DR-9C R04, 1-6
- 48 SM R03 R04, 1-48
- 96 SM R03 R04, 1-96

- (3) 1 1/4" CNC IN TRENCH (48F, (5) 6F, SPARE)
- (3) 1 1/4" CNC IN TRENCH (96F, SPARE, SPARE)
- HH 704, TYPE S1 STA 1145+72
- (3) 1 1/4" CNC IN TRENCH (96F, SPARE, SPARE)
- 1/4" CNC (6F)
- (3) 1 1/4" CNC IN TRENCH (48F, (6) 6F, SPARE)
- (3) 1 1/4" CNC IN TRENCH (96F, SPARE, SPARE)

- (3) 1 1/4" CNC IN TRENCH (48F, (5) 6F, SPARE)
- (3) 1 1/4" CNC IN TRENCH (96F, SPARE, SPARE)
- HH 705, TYPE S1 STA 1141+81
- (3) 1 1/4" CNC IN TRENCH (48F, (5) 6F, SPARE)
- (3) 1 1/4" CNC IN TRENCH (48F, (5) 6F, SPARE)
- (3) 1 1/4" CNC IN TRENCH (96F, SPARE, SPARE)
- 4" CNC CONCRETE ENCASED, BY OTHERS (SPARE)
- 4" CNC CONCRETE ENCASED, BY OTHERS (SPARE)
- (3) 1 1/4" CNC (48F, (5) 6F, SPARE)
- 4" CNC CONCRETE ENCASED, BY OTHERS (SPARE)
- (3) 1 1/4" CNC IN TRENCH (96F, SPARE, SPARE)

- (3) 1 1/4" CNC IN TRENCH (48F, (4) 6F, SPARE)
- (3) 1 1/4" CNC IN TRENCH (48F, (4) 6F, SPARE)
- 1/4" CNC IN TRENCH (6F)
- FIBER OPTIC SPLICE - LATERAL
- HH 706 TYPE C1 STA 1138+10
- 3" GSC TRENCHED (12F)
- R03 R04 12 SM, 1-8
- PROPOSED IDOT LIGHTING CONTROLLER "M" STA. 1138+10, 109 LT
- FIBER OPTIC TERMINATION PANEL, 12F
- PROPOSED SURVEILLANCE CABINET M1 STA. 1138+10, 108LT



REVISIONS	
NAME	DATE

ILLINOIS DEPARTMENT OF TRANSPORTATION
 F.A.I. 94/90 (DAN RYAN EXPRESSWAY)
 31st STREET TO I-57
 COMMUNICATIONS BACKBONE CONDUIT AND CABLE LAYOUT
 SCALE: 1"=50'
 DATE: October 29, 2004
 DRAWN BY: YAD
 CHECKED BY: JEZ

Edwards AND Kelcey
 ONE NORTH FRANKLIN
 CHICAGO, IL 60606
 PHONE: (312) 251-3000
 FAX: (312) 251-3015
 WEB: WWW.EDKORP.COM

10/15/2004 01:58:32 PM P:\03\009\0311\6\ward\comm\2007\2as17