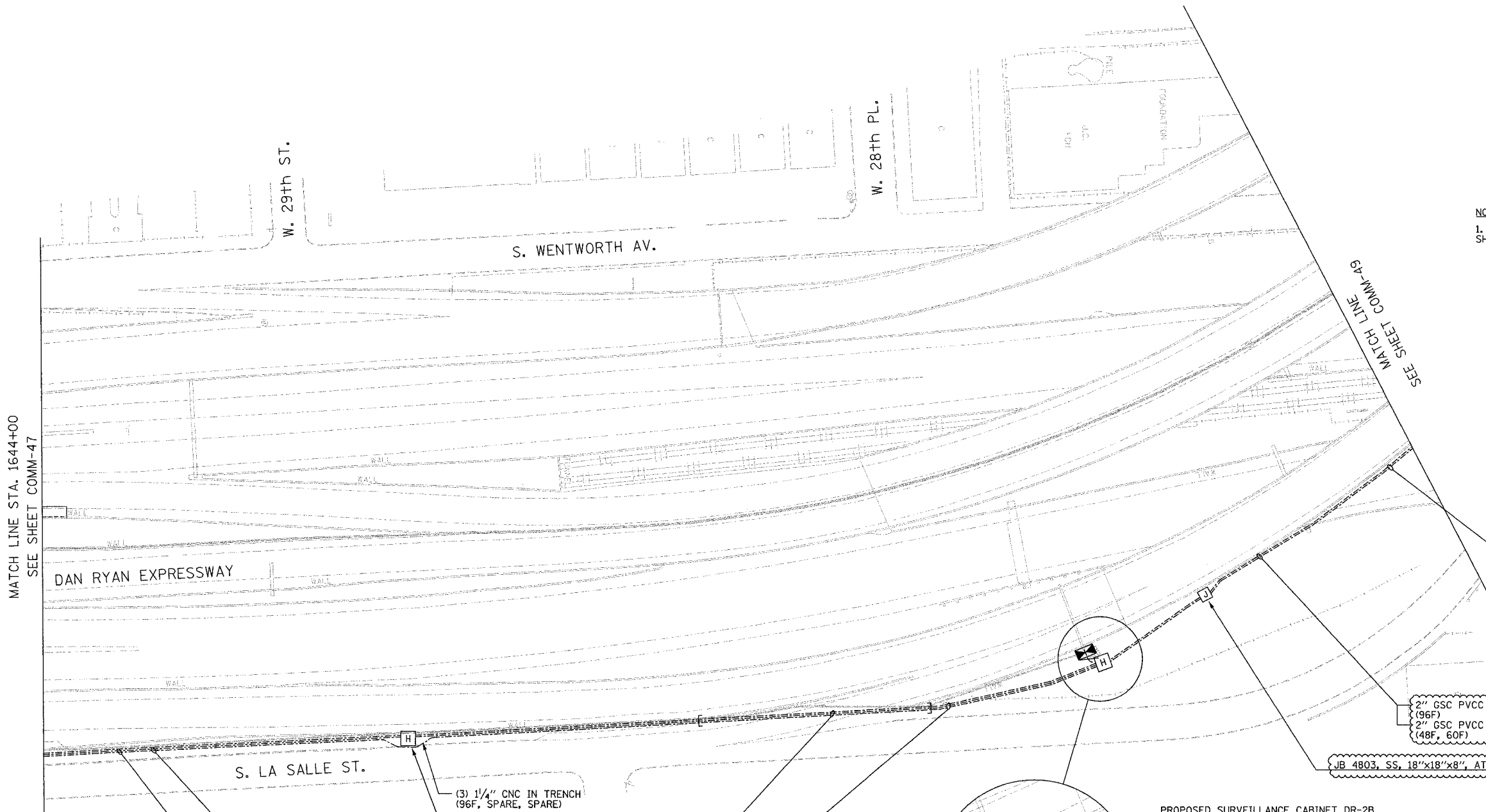


SECTION	COUNTY	TOTAL SHEETS	SHEET NO.
2003-0311	COOK	976	814
STA. 1644+00	TO STA.		
FED. ROAD DIST. NO.	ILLINOIS	FED. AID PROJECT	
62583			

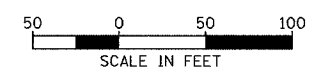


NOTES:
 1. FOR CONDUIT ATTACHMENT DETAILS, SEE SHEET DT-52.

- 48 SM
- R01 R03, 1-48
- 48 SM
- R01 R02, 1-48
- 12 SM
- R01 ETP, 1-12
- 96 SM
- R01 R03, 1-96

2" GSC PVCC ATS (NOTE 1)
(96F)
 2" GSC PVCC ATS (NOTE 1)
(48F, 60F)

JB 4803, SS, 18"x18"x8", ATS



COMM-48

- (3) 1/4" CNC IN TRENCH (48F, 6F, SPARE)
- (3) 1/4" CNC IN TRENCH (60F, SPARE, SPARE)
- (3) 1/4" CNC IN TRENCH (96F, SPARE, SPARE)
- 6 SM
- CCTV-14 R03, 1-6
- 48 SM
- R01 R03, 1-48
- 48 SM
- R01 R02, 1-48
- 12 SM
- R01 ETP, 1-12
- 96 SM
- R01 R03, 1-96

(3) 1/4" CNC IN TRENCH (96F, SPARE, SPARE)
 HH 4801 TYPE S1

- 4" CNC PUSHED (96F, SPARE, SPARE)
- 4" CNC PUSHED (60F, SPARE, SPARE)
- 4" CNC PUSHED (48F, 6F, SPARE)
- (3) 1/4" CNC IN TRENCH (96F, SPARE, SPARE)
- (3) 1/4" CNC IN TRENCH (60F, SPARE, SPARE)
- (3) 1/4" CNC IN TRENCH (48F, 6F, SPARE)

- 1/4" CNC IN TRENCH (6F)
- (3) 1/4" CNC IN TRENCH (60F, SPARE, SPARE)
- (3) 1/4" CNC IN TRENCH (48F, 6F, SPARE)
- (3) 1/4" CNC IN TRENCH (96F, SPARE, SPARE)

2" GSC IN TRENCH (48F, 60F)
 2" GSC IN TRENCH (96F)

HH 4802 TYPE C1

PROPOSED SURVEILLANCE CABINET DR-2B

REVISIONS		
NAME	DATE	
REVISION 1	12/17/04	

ILLINOIS DEPARTMENT OF TRANSPORTATION
 F.A.I. 94/90 (DAN RYAN EXPRESSWAY)
 31st STREET to I-57

COMMUNICATIONS BACKBONE CONDUIT AND CABLE LAYOUT

SCALE: 1"=50'
 DATE: October 29, 2004
 DRAWN BY: DHI
 CHECKED BY: MJL

Edwards AND Kelcey
 ONE NORTH FRANKLIN
 CHICAGO, IL 60606
 PHONE: (312) 251-3000
 FAX: (312) 251-3015
 WEB: WWW.EKCCORP.COM

12/10/2004 02:46:17 PM