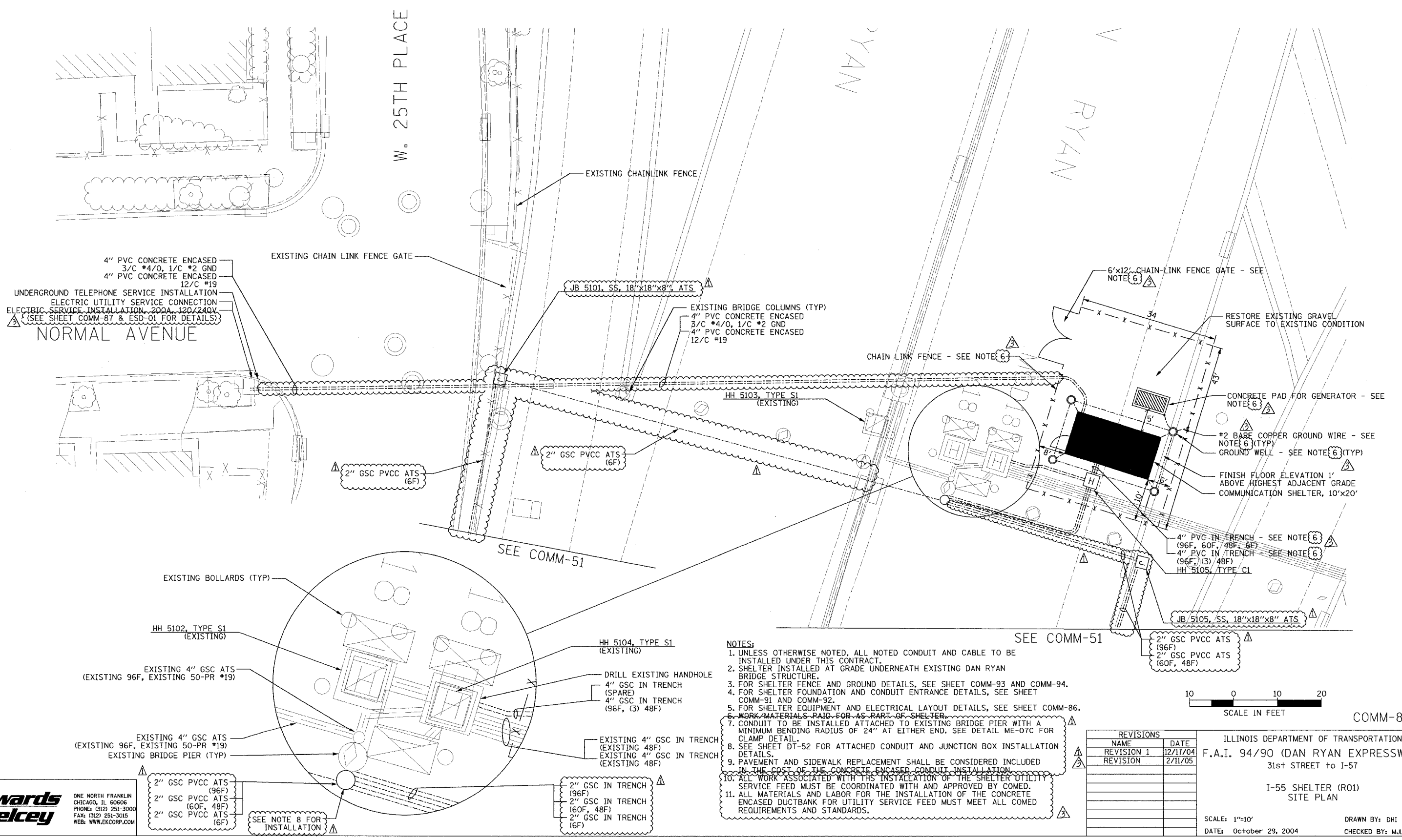


# 846-850 are Deleted #

SECTION	COUNTY	TOTAL SHEETS	SHEET NO.
2003-0311	COOK	976	851
STA.	TO STA.		
FED. ROAD DIST. NO.	ILLINOIS	FED. AID PROJECT	
62583			



P:\030019\030351\TSCADD\PP020032E.SHT



- NOTES:**
- UNLESS OTHERWISE NOTED, ALL NOTED CONDUIT AND CABLE TO BE INSTALLED UNDER THIS CONTRACT.
  - SHELTER INSTALLED AT GRADE UNDERNEATH EXISTING DAN RYAN BRIDGE STRUCTURE.
  - FOR SHELTER FENCE AND GROUND DETAILS, SEE SHEET COMM-93 AND COMM-94.
  - FOR SHELTER FOUNDATION AND CONDUIT ENTRANCE DETAILS, SEE SHEET COMM-91 AND COMM-92.
  - FOR SHELTER EQUIPMENT AND ELECTRICAL LAYOUT DETAILS, SEE SHEET COMM-86.
  - WORK/MATERIALS PAID FOR AS PART OF SHELTER.
  - CONDUIT TO BE INSTALLED ATTACHED TO EXISTING BRIDGE PIER WITH A MINIMUM BENDING RADIUS OF 24" AT EITHER END. SEE DETAIL ME-07C FOR CLAMP DETAIL.
  - SEE SHEET DT-52 FOR ATTACHED CONDUIT AND JUNCTION BOX INSTALLATION DETAILS.
  - PAVEMENT AND SIDEWALK REPLACEMENT SHALL BE CONSIDERED INCLUDED IN THE COST OF THE CONCRETE ENCASED CONDUIT INSTALLATION.
  - ALL WORK ASSOCIATED WITH THE INSTALLATION OF THE SHELTER UTILITY SERVICE FEED MUST BE COORDINATED WITH AND APPROVED BY COMED.
  - ALL MATERIALS AND LABOR FOR THE INSTALLATION OF THE CONCRETE ENCASED DUCTBANK FOR UTILITY SERVICE FEED MUST MEET ALL COMED REQUIREMENTS AND STANDARDS.

REVISIONS		
NAME	DATE	
REVISION 1	12/17/04	
REVISION	2/11/05	

ILLINOIS DEPARTMENT OF TRANSPORTATION  
 F.A.I. 94/90 (DAN RYAN EXPRESSWAY)  
 31st STREET to I-57  
 I-55 SHELTER (R01)  
 SITE PLAN

SCALE: 1"=10'  
 DATE: October 29, 2004

DRAWN BY: DHI  
 CHECKED BY: MJL

**Edwards AND Kelcey**  
 ONE NORTH FRANKLIN  
 CHICAGO, IL 60606  
 PHONE: (312) 251-3000  
 FAX: (312) 251-3015  
 WEB: WWW.EKCORP.COM

02/09/2005 03:43:51 PM