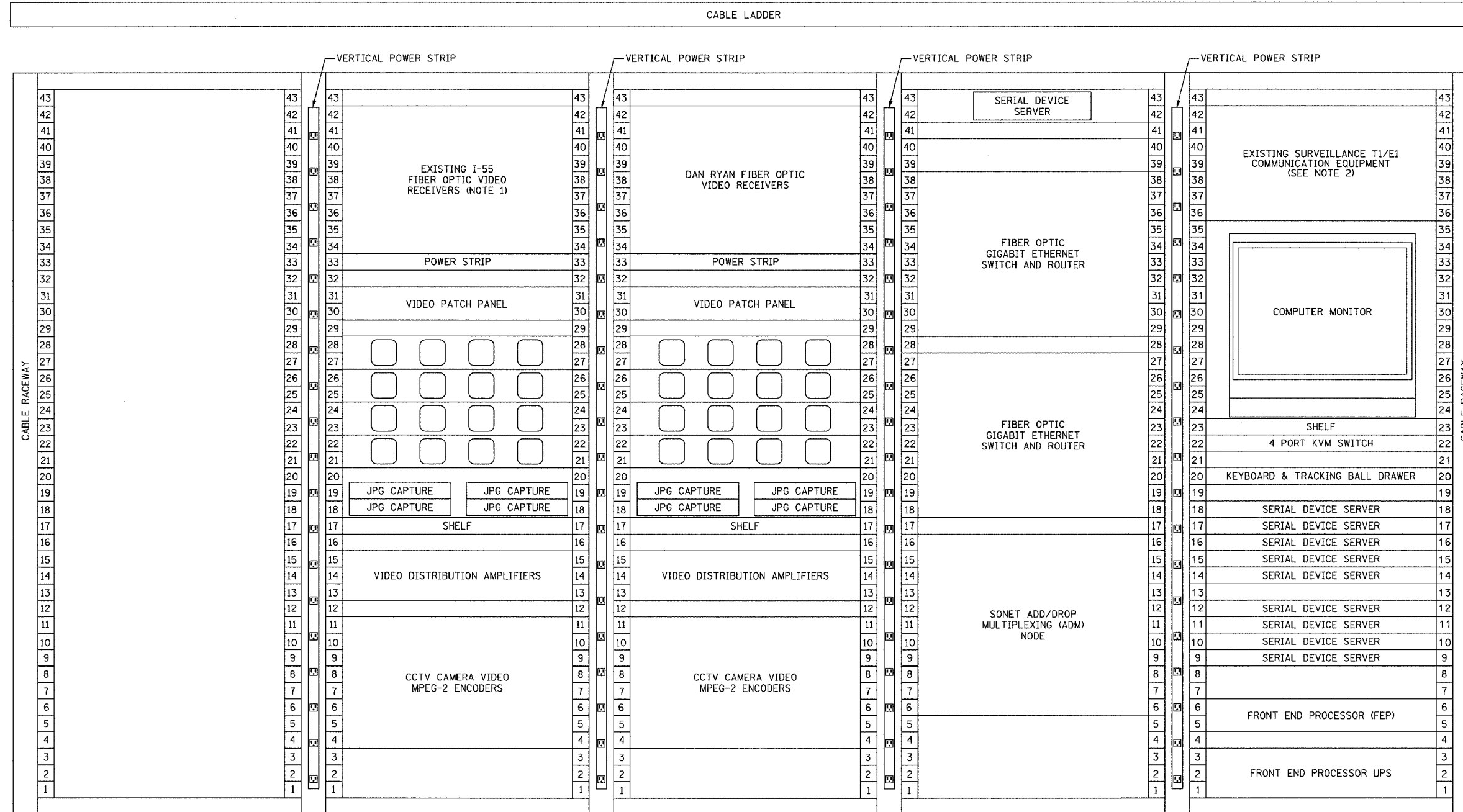


F.A.I. RTE.	SECTION	COUNTY	TOTAL SHEETS	SHEET NO.
94/90	2003-0311	COOK	976	856
STA.	TO STA.			
FED. ROAD DIST. NO.	ILLINOIS	FED. AID PROJECT		
62583				



EQUIPMENT RACK ELEVATION
NOT TO SCALE

- ABBREVIATIONS**
- (B) BACKBONE
 - (D) DISTRIBUTION
 - CCTV CLOSED CIRCUIT TELEVISION
 - KVM KEYBOARD/VIDEO/MOUSE

- NOTES:**
1. EXISTING EQUIPMENT RELOCATED FROM THE TRAFFIC SYSTEM CENTER (TSC).
 2. EXISTING EQUIPMENT RELOCATED FROM IDOT FIBER OPTIC CABINET. SEE SHEET COMM-89 FOR DETAILS.
 3. ALL INSTALLED HARDWARE SHALL HAVE ENGRAVED NAMEPLATES WITH AN ATTACHMENT METHOD AND DESIGNATION APPROVED BY THE ENGINEER.

REVISIONS	
NAME	DATE
REVISION 1	12/17/04

COMM-90

ILLINOIS DEPARTMENT OF TRANSPORTATION
F.A.I. 94/90 (DAN RYAN EXPRESSWAY)
31st STREET TO I-57

I-55 SHELTER (R01)
EQUIPMENT RACK ELEVATION

SCALE: NOT TO SCALE DRAWN BY: DHI
DATE: October 29, 2004 CHECKED BY: JEZ



P:\030019\035\16\cadd\002012a.rvt 12/15/2004 01:51:32 PM