

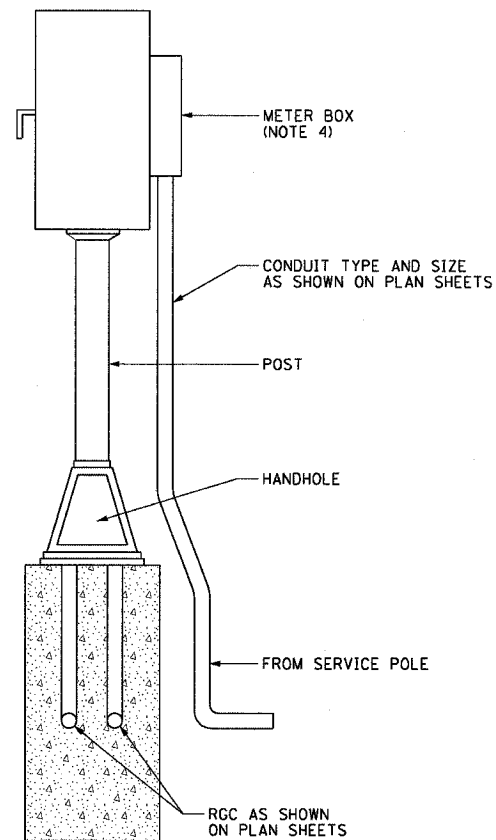
# pg 901 is Deleted #

F.A.I. RTE.	SECTION	COUNTY	TOTAL SHEETS	SHEET NO.
90/94	2003-0311	COOK	976	901A
STA.	TO STA.			
FED. ROAD DIST. NO. 1		ILLINOIS	FED. AID PROJECT	

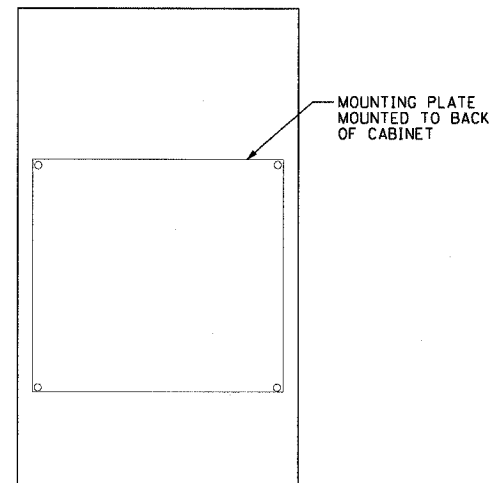
62583

**NOTES:**

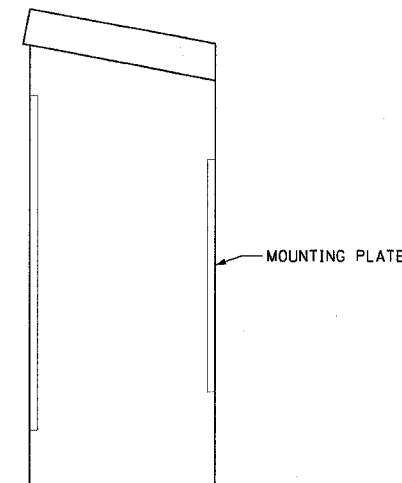
- CABINETS, CABINET POSTS AND CABINET PEDESTALS SHALL BE PRIMED AND PAINTED IN ACCORDANCE WITH SECTION T637 OF THE "STANDARD SPECIFICATIONS FOR TRAFFIC CONTROL ITEMS". THE FINAL COAT SHALL BE O'BRIEN POWDER PAINT COLOR YELLOW STONE II OR EQUIVALENT IN COLOR. THE INTERIOR SHALL BE PAINTED WHITE.
- CABINETS SHALL BE INSTALLED IN ACCORDANCE WITH APPLICABLE PORTIONS OF SECTION T400 OF THE "STANDARD SPECIFICATIONS FOR TRAFFIC CONTROL ITEMS".
- CABINET SHALL BE EQUIPPED WITH A 50 AMPERE, TWO-POLE CIRCUIT BREAKER (2 CIRCUIT BREAKERS AT LOCATIONS SERVING TWO SIGNS), A.C. R.F.I. LINE FILTERING SURGE PROTECTOR, AND CABLE MOUNTING CONNECTIONS AS INCIDENTAL TO THE COST OF THE CABINET.
- METER BOX SHALL BE MOUNTED TO SIDE OR BACK WALL OF CONTROL CABINET AS REQUIRED TO ALLOW READING OF METER FROM FRONTAGE ROAD.
- CABLES FROM METER BOX CAN PASS THROUGH SIDE WALL OF CONTROL CABINET.
- INCIDENTAL TO THE COST OF EACH CABINET THE CONTRACTOR SHALL CONSTRUCT A 130 mm (5 IN.) PCC SIDEWALK OF A RECTANGULAR AREA 915 mm (3 FEET) BY 1.25 m (4 FEET) IMMEDIATELY ADJACENT TO THE CABINET FOUNDATION ON THE SAME SIDE OF THE FOUNDATION AS THE CABINET DOOR TO PROVIDE FOOTING DURING INSTALLATION AND MAINTENANCE.
- ANCHOR BOLTS, POST, AND HANDHOLE FOR PEDESTAL BASE MOUNTED CABINETS SHALL BE CONSIDERED INCIDENTAL TO THE COST OF THE CABINET.
- THE CABINET DOOR SHALL BE HINGED ON THE RIGHT SIDE WHEN FACING THE CABINET. THE DOOR SHALL BE FURNISHED WITH A GASKET THAT SHALL FORM A WEATHER TIGHT SEAL BETWEEN THE CABINET AND DOOR. THE HINGES SHALL BE CONTINUOUS AND BOLTED TO THE CABINET AND DOOR UTILIZING 1/4-20 STAINLESS STEEL CARRIAGE BOLTS AND NY-LOCK NUTS. THE HINGES WILL BE MADE OF STAINLESS STEEL WITH A 6.35 mm (0.25 INCH) DIAMETER STAINLESS STEEL HINGE PIN. THE HINGE PIN SHALL BE CAPPED TOP AND BOTTOM BY WELD TO RENDER IT TAMPER PROOF.
- THE LATCHING MECHANISM SHALL BE A 3 POINT DRAW ROLLER TYPE. THE CENTER CATCH AND PUSHRODS SHALL BE EITHER CADMIUM OR ZINC PLATED, TYPE II CLASS I. PUSHRODS WILL BE TURNED EDGEWISE AT THE OUTWARD SUPPORTS AND SHALL BE 6.35 mm (0.25 INCH) BY 19.05 mm (0.75 INCH), MINIMUM. ROLLERS SHALL HAVE A MINIMUM DIAMETER OF 22.22 mm (0.875 INCH) AND WILL BE MADE OF NYLON. THE CENTER CATCH SHALL BE FABRICATED FROM 3.55 mm (0.14 INCH) STEEL, MINIMUM. WHEN THE DOOR IS CLOSED AND LATCHED, IT WILL BE LOCKED. THE LATCHING HANDLE SHALL HAVE A PROVISION FOR PADLOCKING IN THE CLOSED POSITION. AN OPERATING HANDLE SHALL BE FURNISHED WITH EACH LOCK. THE HANDLE WILL BE STAINLESS STEEL WITH A 19.05 mm (0.75 INCH) DIAMETER SHANK.
- THE ENCLOSURE SHALL BE EQUIPPED WITH TWO ADJUSTABLE "C" MOUNTING CHANNELS WELDED ON BOTH SIDE WALLS AND BACK WALL OF THE ENCLOSURE, ALLOWING VERSATILE POSITIONING OF SHELVES OR PANELS. MOUNTING CHANNELS SHALL BE FACTORY PAINTED SAME COLOR AS INTERIOR OF CABINET.



ESP 2 W/METER FITTING  
(NOTE 15)



ESP 2 CABINET  
(NOTE 15)



PROFILE VIEW

**NOTES CONTINUED:**

- CABINET DOOR SHALL NOT HAVE COMPARTMENT DOORS OR LOUVERS.
- ALL FIELD CABINETS SHALL BE FITTED WITH BRASS LOCKS.
- POST TOP MOUNTED CABINETS SHALL HAVE A 6.3 mm (0.25 INCH) BOTTOM OF CABINET WELDED.
- CABINET SHALL BE FABRICATED ALUMINUM NEMA TYPE 3R WITH MINIMUM THICKNESS OF .1875". MINIMUM INTERIOR CABINET SPACE SHALL BE 36"H x 20"W x 15"D.
- SEE DRAWING DT-06B FOR ADDITIONAL METER PEDESTAL DETAILS.

REVISIONS	
NAME	DATE
NEW DRAWING PER	2/11/05
REVISION	

ILLINOIS DEPARTMENT OF TRANSPORTATION  
F.A.I. 90/94 (DAN RYAN EXPRESSWAY)  
31st STREET TO I-57

METER PEDESTAL  
CABINET DETAILS  
(PART 1)

SCALE: NOT TO SCALE DRAWN BY: CJM  
DATE: October 29, 2004 CHECKED BY: BMW

02/10/2005 09:27:36 AM