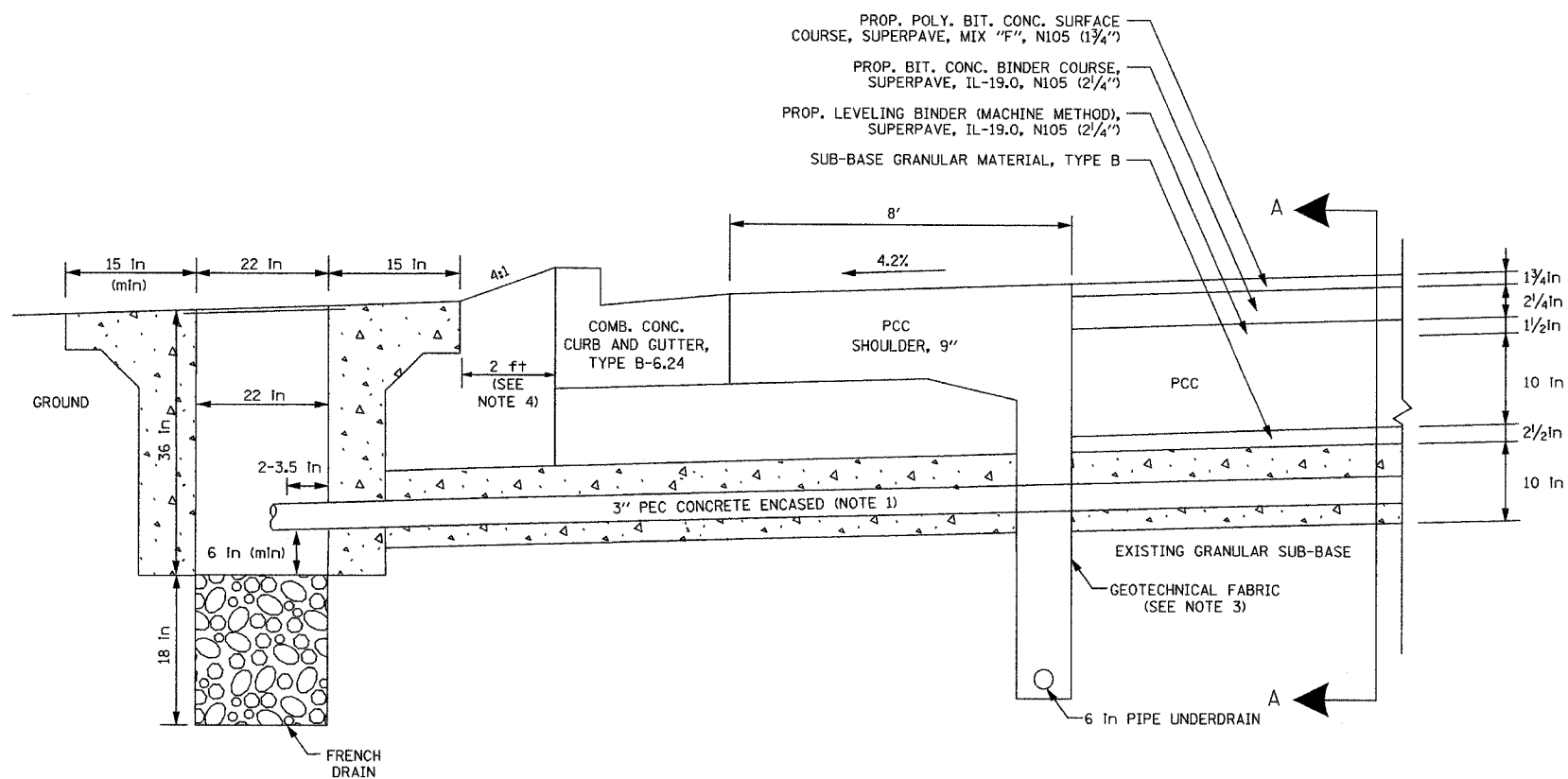
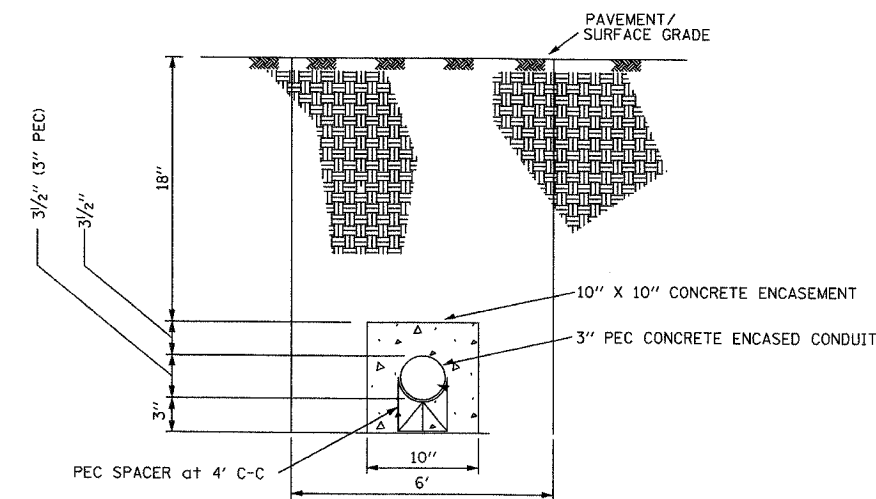


SECTION	COUNTY	TOTAL SHEETS	SHEET NO.
2003-03II	COOK	976	435
STA. 2003-03II	TO STA. COOK		
FED. ROAD DIST. NO. 62583	ILLINOIS	FED. AID PROJECT	



HEAVY DUTY HANDHOLE OUTSIDE EXISTING MAINLINE SHOULDER (TYPICAL)



SECTION A-A  
TYPICAL 3" PEC CONCRETE ENCASED CONDUIT UNDER PAVEMENT DETAIL  
(FOR MICROLOOP INSTALLATION IN EXISTING MAINLINE PAVEMENT)

THIS SHEET PROVIDED FOR REFERENCE ONLY,  
ALL WORK SHOWN TO BE BY OTHERS

- NOTES
1. 3" PEC CONCRETE ENCASED CONDUIT IS REQUIRED ONLY WHERE SHOWN ON THE PLAN DRAWINGS. WHEN INSTALLED, THE CONDUIT MUST MAINTAIN THE SAME ANGLE AS THE PAVEMENT THROUGHOUT ITS ENTIRE LENGTH.
  2. FOR HANDHOLE DETAIL SEE SHEET DT-47.
  3. WHEN INSTALLING CONDUIT NEAR OR THROUGH UNDERDRAIN GEOTECHNICAL FABRIC, THE CONTRACTOR SHALL MAINTAIN THE INTEGRITY AND UNIFORMITY OF THE UNDERDRAIN FABRIC THROUGH OVERLAP TO THE SATISFACTION OF THE ENGINEER.
  4. FOR HANDHOLE INSTALLATION BEHIND SHOULDER WITHOUT CURB, INSTALL HANDHOLE 2 FT BEHIND EDGE OF SHOULDER.

**Edwards  
AND Kelcey**  
ONE NORTH FRANKLIN  
CHICAGO, IL 60606  
PHONE: (312) 251-3000  
FAX: (312) 251-3015  
WEB: WWW.EKCORP.COM

REVISIONS	
NAME	DATE

ILLINOIS DEPARTMENT OF TRANSPORTATION  
F.A.I. 94/90 (DAN RYAN EXPRESSWAY)  
31st STREET to I-57

TYPICAL HANDHOLE INSTALLATION DETAIL -  
EXISTING BISHOP FORD MAINLINE SHOULDER

SCALE: NTS  
DATE: October 29, 2004

DRAWN BY: MJP  
CHECKED BY: MJL

DT-29A

10/15/2004 10:33:12 AM