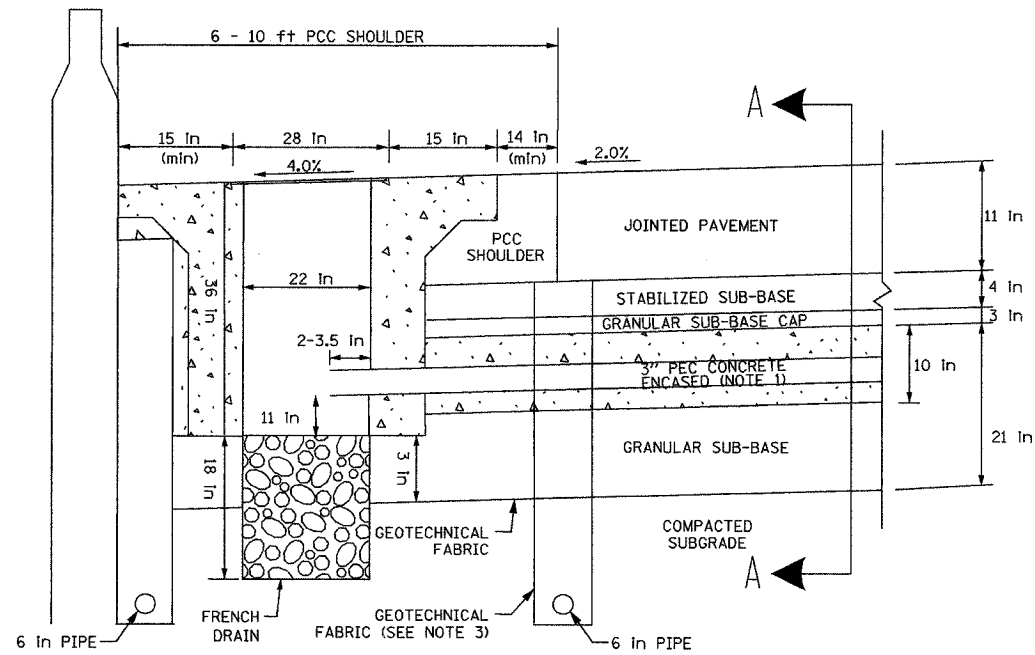
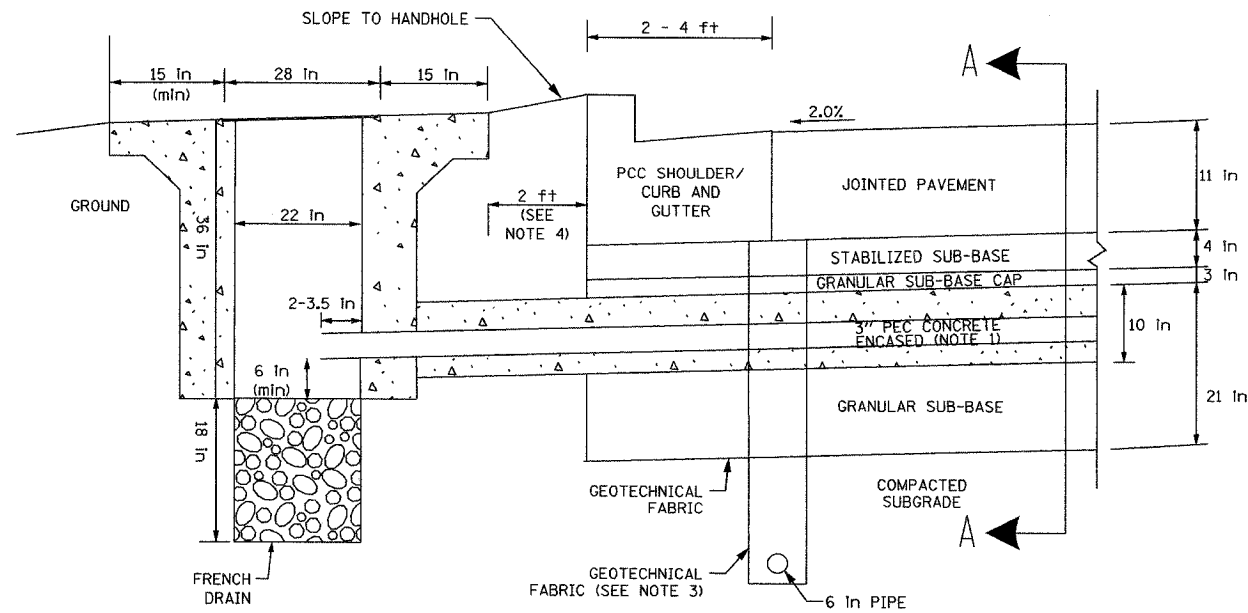


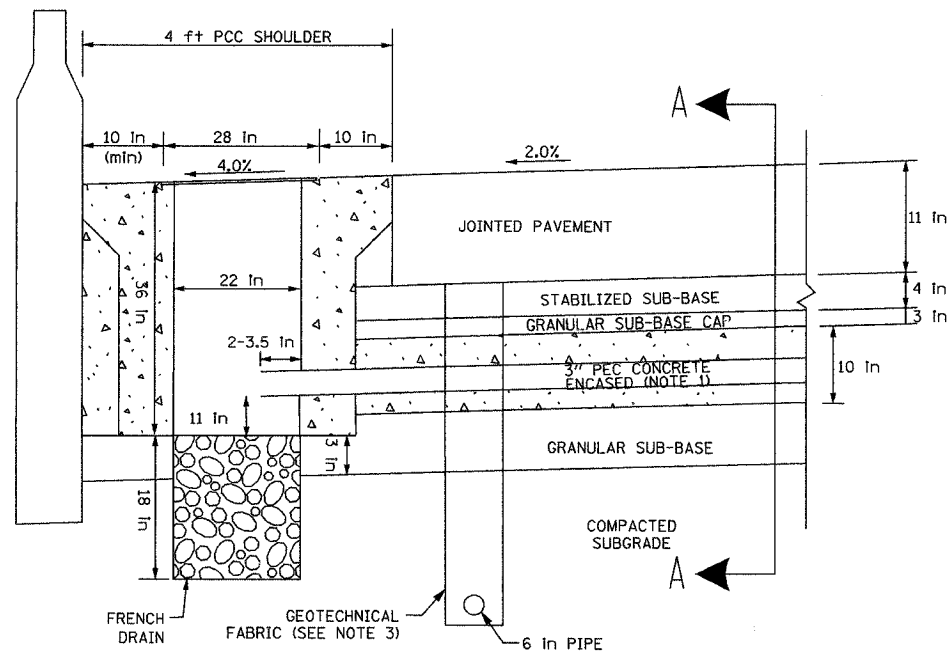
SECTION	COUNTY	TOTAL SHEETS	SHEET NO.
2003-031I	COOK	976	936
STA. TO STA.		FED. ROAD DIST. NO. - ILLINOIS FED. AID PROJECT	
		62583	



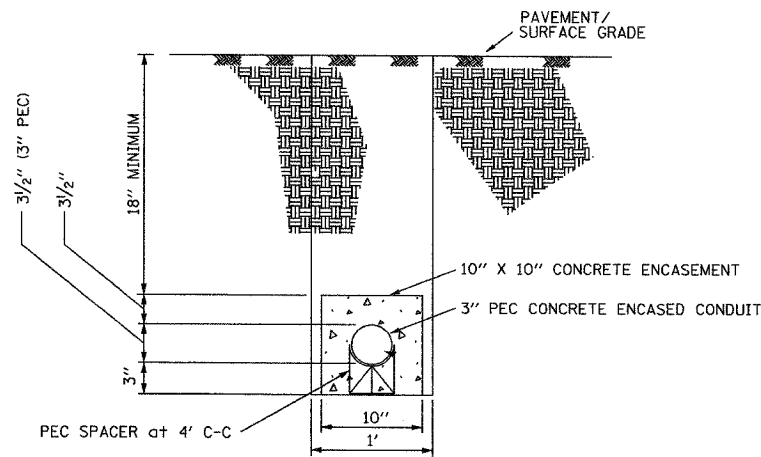
HEAVY DUTY HANDHOLE IN 6' TO 10' RAMP SHOULDER (TYPICAL)



HEAVY DUTY HANDHOLE OUTSIDE 2' TO 4' RAMP SHOULDER WITH CURB AND GUTTER (TYPICAL)



HEAVY DUTY HANDHOLE (SPECIAL) IN 4' RAMP SHOULDER (TYPICAL)



SECTION A-A  
TYPICAL 3" PEC CONCRETE ENCASED CONDUIT UNDER PAVEMENT DETAIL  
(FOR MICROLOOP INSTALLATION IN PROPOSED RAMP PAVEMENT)

NOTES:

1. 3" PEC CONCRETE ENCASED CONDUIT IS REQUIRED ONLY WHERE SHOWN ON THE PLAN DRAWINGS. WHEN INSTALLED, THE CONDUIT MUST MAINTAIN THE SAME ANGLE AS THE PAVEMENT THROUGHOUT ITS ENTIRE LENGTH.
2. FOR HANDHOLE DETAIL SEE SHEET DT-47.
3. WHEN INSTALLING CONDUIT NEAR OR THROUGH UNDERDRAIN GEOTECHNICAL FABRIC, THE CONTRACTOR SHALL MAINTAIN THE INTEGRITY AND UNIFORMITY OF THE UNDERDRAIN FABRIC THROUGH OVERLAP TO THE SATISFACTION OF THE ENGINEER.
4. FOR HANDHOLE INSTALLATION BEHIND SHOULDER WITHOUT CURB, INSTALL HANDHOLE 2 FT BEHIND EDGE OF SHOULDER.

**Edwards  
AND  
Kelcey**  
ONE NORTH FRANKLIN  
CHICAGO, IL 60606  
PHONE: (312) 251-3000  
FAX: (312) 251-3015  
WEB: WWW.EKCORP.COM

REVISIONS	
NAME	DATE

ILLINOIS DEPARTMENT OF TRANSPORTATION  
F.A.I. 94/90 (DAN RYAN EXPRESSWAY)  
31st STREET to I-57

TYPICAL HANDHOLE INSTALLATION  
DETAIL - RAMP SHOULDER

SCALE: NTS  
DATE: October 29, 2004  
DRAWN BY: NB  
CHECKED BY: CTC

DT-30

10/14/2004 09:24:12 AM