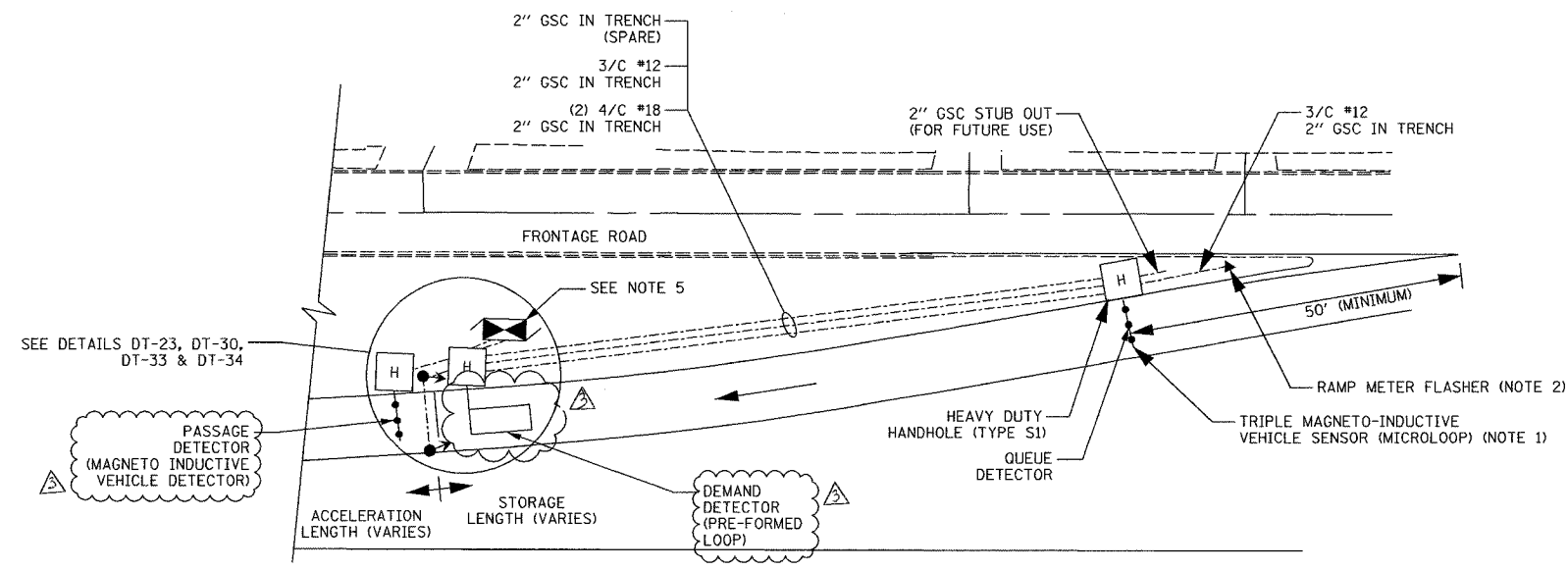


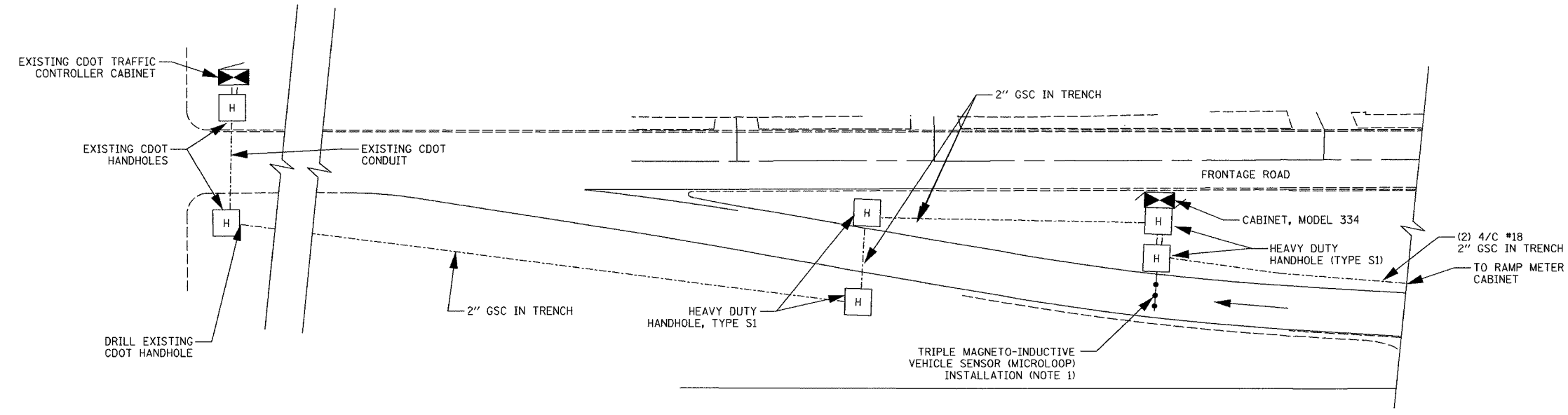
SECTION	COUNTY	TOTAL SHEETS	SHEET NO.
2003-0311	COOK	976	937
STA.	TO STA.		
FED. ROAD DIST. NO.	ILLINOIS FED. AID PROJECT		
62583			



TYPICAL ENTRANCE RAMP METER AND DETECTION SYSTEM LAYOUT

NOTES:

1. FOR TRIPLE MAGNETO-INDUCTIVE VEHICLE SENSOR (MICROLOOP) INSTALLATION, SEE DETAIL DT-23.
2. FOR RAMP METER FLASHER DETAIL, SEE DETAIL DT-35.
3. FOR RAMP METER SIGNAL POST INSTALLATION, SEE DETAILS DT-33 AND DT-34.
4. FOR TYPICAL INSTALLATION DETAILS FOR MAINLINE AND ENTRANCE/EXIT RAMP DETECTION SYSTEM WITH A COLLECTOR-DISTRIBUTOR ROAD, SEE DETAIL DT-32.
5. CABINET LOCATION AS SHOWN ON PLANS OR AS DIRECTED BY THE ENGINEER. CABINET SHALL BE PLACED TO MAXIMIZE THE VIEW OF THE RAMP METER SIGNAL HEADS AND TO MINIMIZE THE CHANCE OF BEING KNOCKED DOWN.



TYPICAL EXIT RAMP DETECTION SYSTEM LAYOUT

DT-31

**Edwards AND Kelcey**  
 ONE NORTH FRANKLIN  
 CHICAGO, IL 60606  
 PHONE: (312) 251-3000  
 FAX: (312) 251-3015  
 WEB: WWW.EKCORP.COM

REVISIONS	
NAME	DATE
REVISION	2/11/05

ILLINOIS DEPARTMENT OF TRANSPORTATION  
 F.A.I. 94/90 (DAN RYAN EXPRESSWAY)  
 31st STREET TO I-57  
 RAMP METER ENTRANCE AND  
 EXIT RAMP DETECTION SYSTEM  
 INSTALLATION DETAIL  
 SCALE: NTS  
 DATE: October 29, 2004  
 DRAWN BY: NB  
 CHECKED BY: CTC

P:\030019\0305\15\SCADD\DT02008E.SWT 02/09/2005 09:55:53 AM