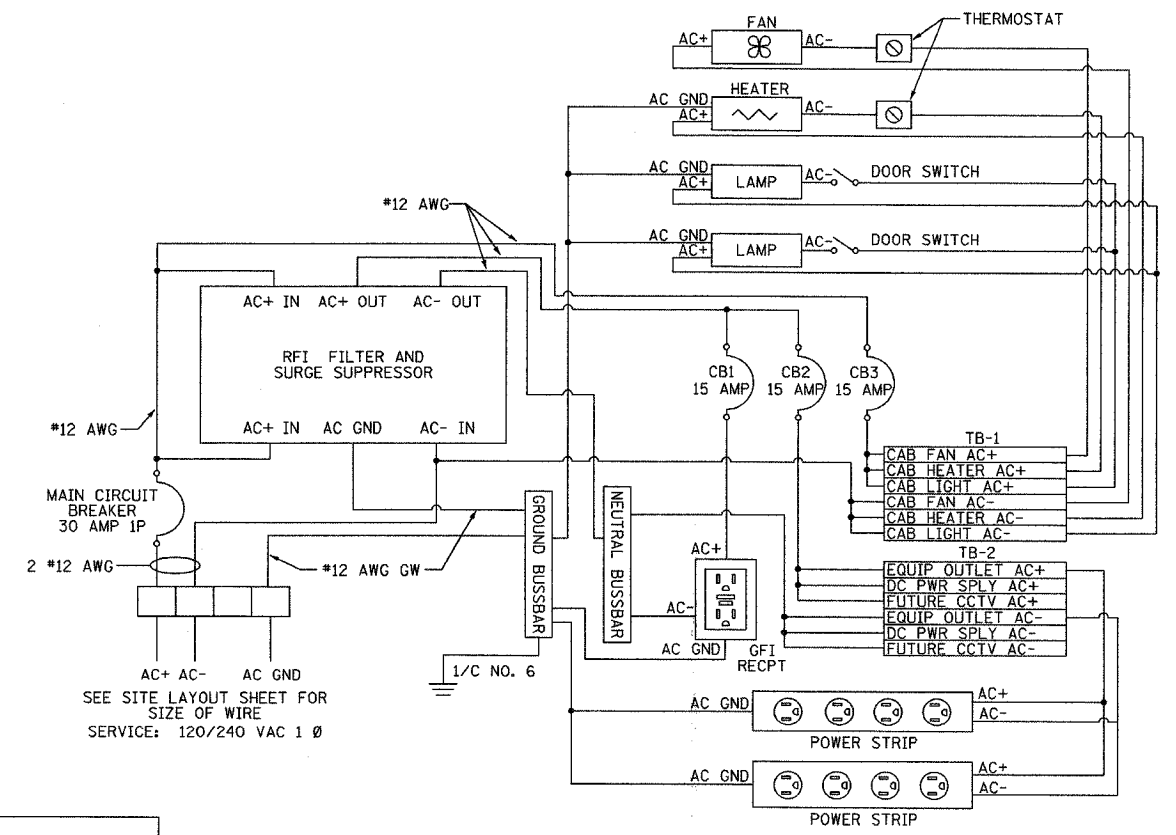
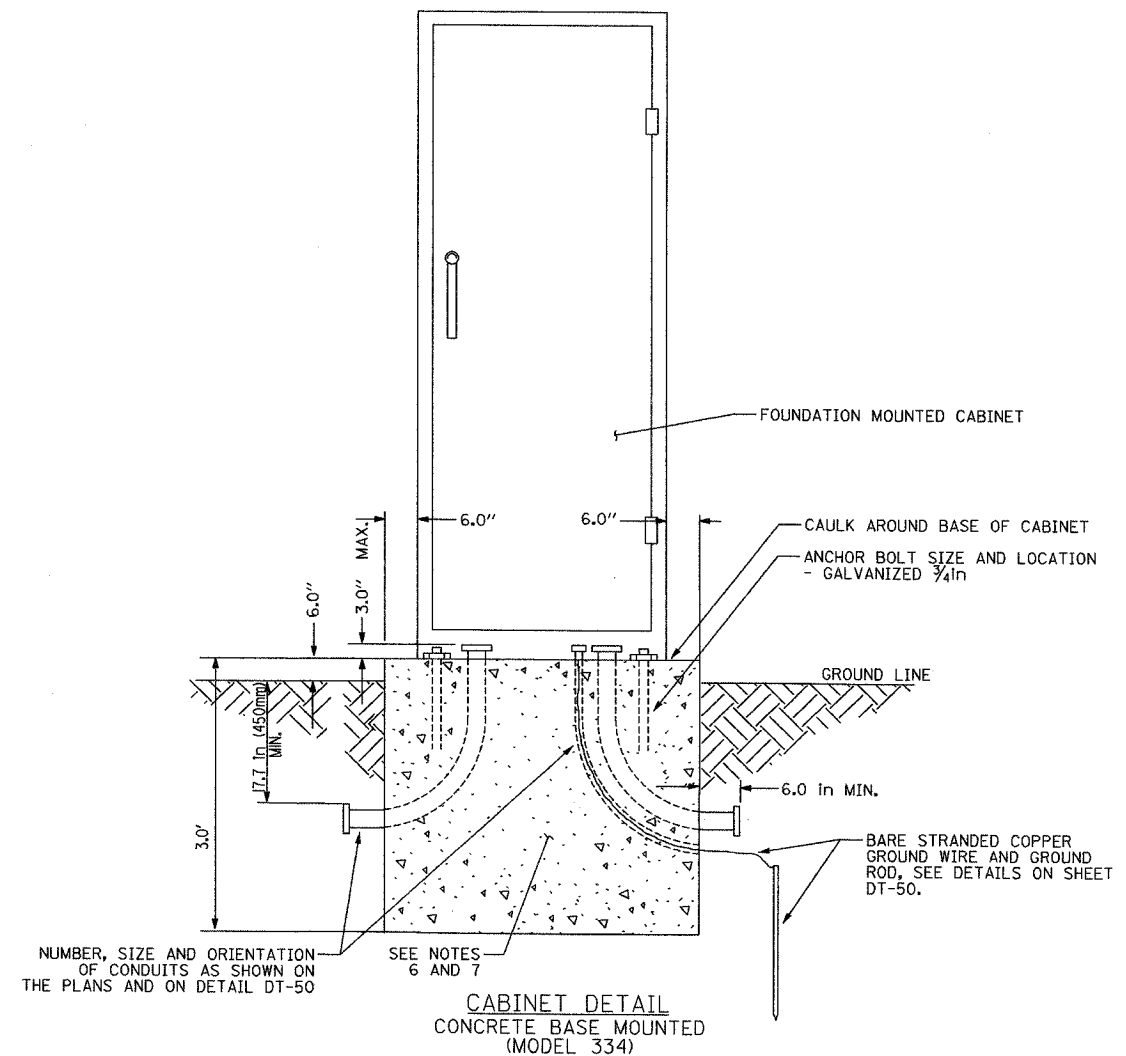
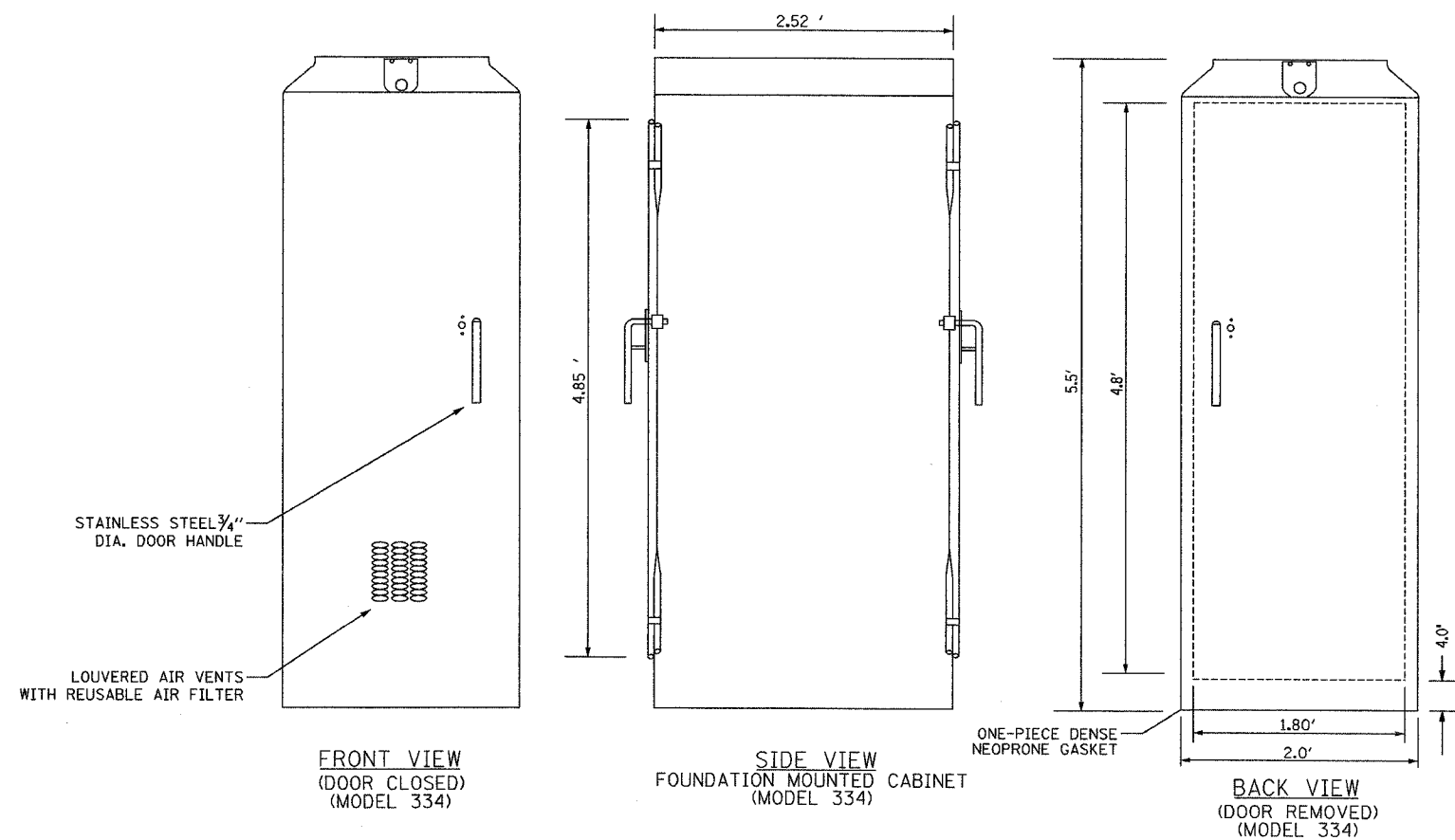


SECTION	COUNTY	TOTAL SHEETS	SHEET NO.
2003-031I	COOK	976	443
STA.	TO STA.		
FED. ROAD DIST. NO.	ILLINOIS	FED. AID PROJECT	
62583			



- NOTES**
- REFER TO SPECIAL PROVISIONS FOR CABINET DETAILS AND ADDITIONAL REQUIREMENTS.
 - CABINET ENTRIES INCLUDE VERTICAL ARRANGEMENT FOR MAJOR EQUIPMENT ITEMS ONLY.
 - INSTALL ADDITIONAL ITEMS ON SIDE AND BACK PANELS PER THE SPECIAL PROVISIONS.
 - THE CONTRACTOR SHALL INSTALL INSULATED BUSHINGS AND DUCT SEALANT AT ALL CONDUIT BEND TERMINATIONS IN FOUNDATIONS.
 - CONCRETE BASE TO BE FORMED AT LEAST 6.0 IN ABOVE THE GROUND SURFACE.
 - CONCRETE BASE MUST BE CAST IN PLACE.
 - ALL WORK INDICATED SHALL BE PAID FOR UNDER ITEM CABINET, MODEL 334 EXCLUSIVE OF THE CONCRETE FOUNDATION. CABINET BOTTOM CONFIGURATION SHALL BE AS DIRECTED BY THE ENGINEER.

REVISIONS	
NAME	DATE

ILLINOIS DEPARTMENT OF TRANSPORTATION
 F.A.I. 94/90 (DAN RYAN EXPRESSWAY)
 31st STREET to I-57

CABINET, MODEL 334 DETAILS

SCALE: NTS
 DATE: October 29, 2004

DRAWN BY: MJL
 CHECKED BY: GFR

Edwards AND Kelcey
 ONE NORTH FRANKLIN
 CHICAGO, IL 60606
 PHONE: (312) 251-3000
 FAX: (312) 251-3015
 WEB: WWW.EKCORP.COM

SURVEILLANCE CABINET POWER DISTRIBUTION ASSEMBLY (PDA)
 NOT TO SCALE

DT-36

10/15/2004 03:02:24 PM