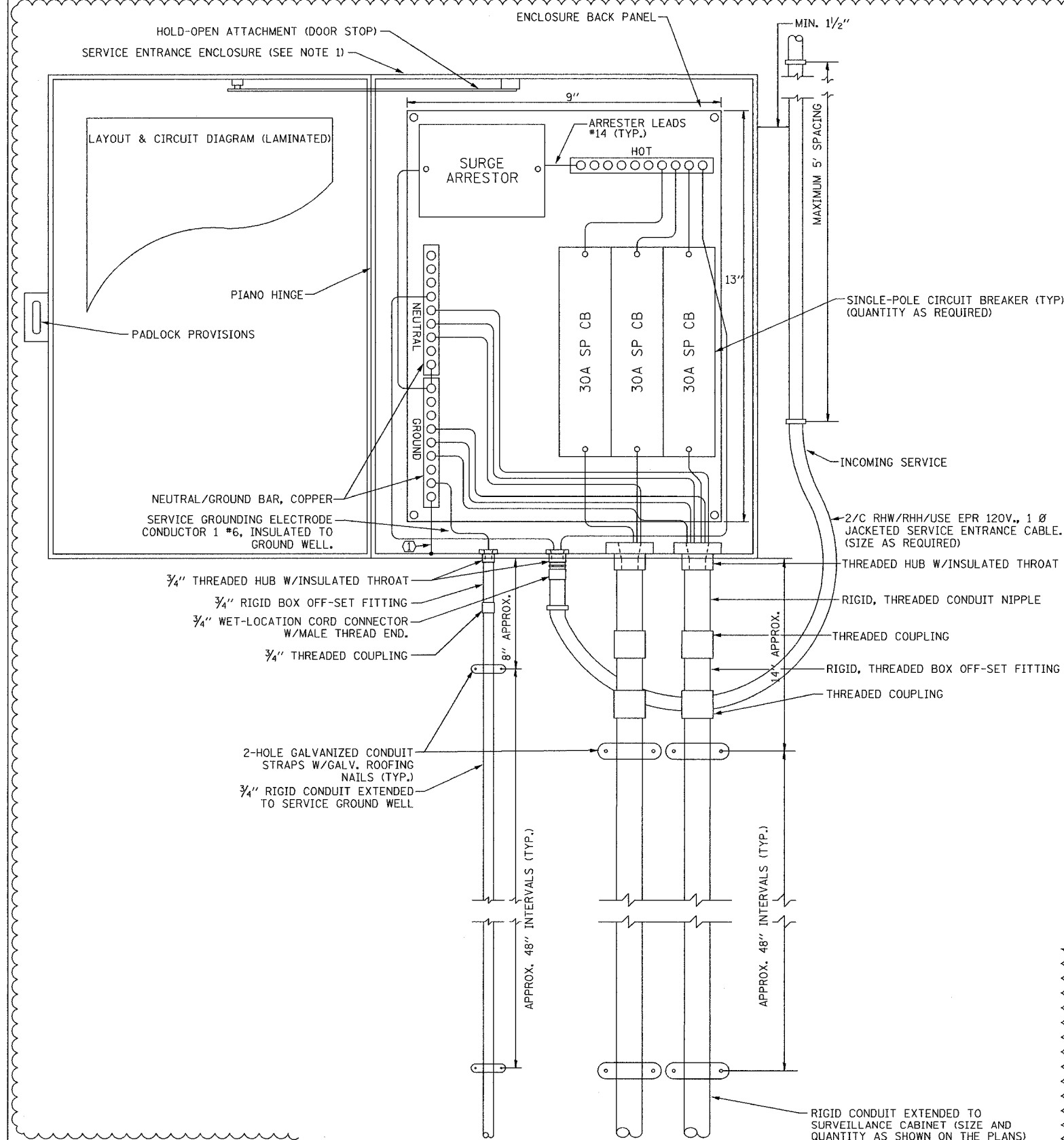
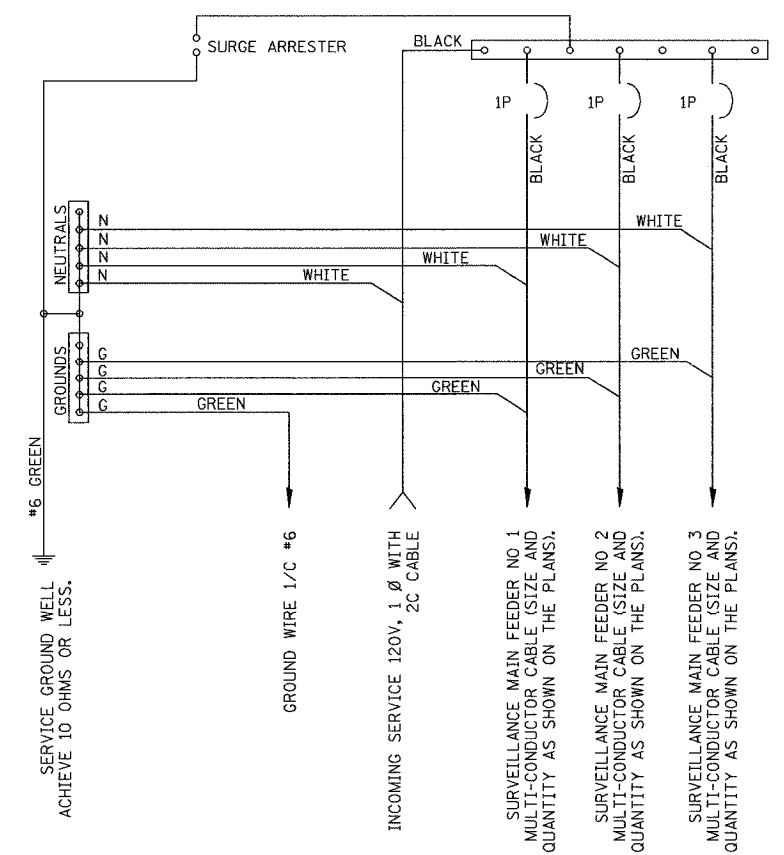


F.A.I. R.T.E.	SECTION	COUNTY	TOTAL SHEETS	SHEET NO.
94/90	2003-0311	COOK	976	967
STA.	TO STA.			
FED. ROAD DIST. NO. 62583	ILLINOIS	FED. AID PROJECT		



120V ELECTRIC SERVICE  
GENERAL LAYOUT DIAGRAM



SCHEMATIC DIAGRAM

- NOTES:**
- ELECTRIC SERVICE SHALL BE OF THE VOLTAGE INDICATED. WHERE 120-VOLT SERVICE IS INDICATED, SERVICE DROP CABLE SHALL BE INSTALLED ACCORDINGLY AND LIGHTING MAIN FEEDER CABLE SHALL BE OMITTED.
  - THE ELECTRIC SERVICE BOX SHALL BE NEMA 4X STAINLESS STEEL, NOMINALLY 16"x12"x8", WITH PIANO HINGED DOOR, STEEL BACK PANEL, FAST-ACTING STAINLESS STEEL ENCLOSURE CLAMPS, PADLOCK PROVISIONS, DOOR STOP KIT AND STEEL BACK PANEL, HOFFMAN CATALOG A-16H208SS6LP/A-16P2/A-DSTOPK/C-PMK12, OR APPROVED EQUAL.
  - THE ELECTRIC SERVICE EQUIPMENT ASSEMBLY SHALL BE UL LABELED, SUITABLE FOR USE AS SERVICE EQUIPMENT.
  - CIRCUIT BREAKERS SHALL BE THERMAL MAGNETIC BOLT-ON TYPE WITH A MINIMUM INTERRUPTING CAPACITY OF 25,000 SYMMETRICAL AMPERES AT 240 VOLTS. THEY SHALL BE LOCKABLE IN THE "OFF" POSITION FOR COMPLIANCE WITH OSHA LOCK-OUT/TAG-OUT REQUIREMENTS. HANDLES SHALL BE TRIP FREE.
  - THE SURGE PROTECTOR SHALL BE SUITABLE FOR 120 VOLT SINGLE PHASE 60HZ AC ELECTRICAL SERVICE, WITH A SURGE ENERGY CAPABILITY OF 3600 JOULES OR BETTER AT 8/20 MICROSECONDS, RATED -40 TO 65 DEGREES C., WITH LED OPERATING INDICATORS, AND SHALL BE UL LISTED PER UL 1449. SURGE PROTECTOR SHALL BE WIRED FOR 120 V SERVICE. FOLLOW MANUFACTURER RECOMMENDED WIRING SPECIFICATIONS.
  - BUS BARS, CONNECTORS AND LUGS SHALL BE COPPER, RATED FOR THE APPROPRIATE AMPACITY, INSULATED AND ISOLATED AND CONFIGURED TO PREVENT SHORTED CONDITIONS FROM TIGHTENING TERMINATIONS, ETC. THE OVERALL BUS SECTION SHALL BE CONFIGURED BEHIND AN INSULATING BARRIER SHIELD WHICH IS REMOVABLE FOR ACCESS TO CONNECTIONS.
  - THE GROUND AND NEUTRAL BAR SHALL BE CONFIGURED WITH SEPARATE GROUND AND NEUTRAL SECTIONS AND SPARE TERMINALS AS INDICATED. THE HEADS OF GROUND SCREWS SHALL BE PAINTED GREEN, THE HEADS OF NEUTRAL SCREWS SHALL BE PAINTED WHITE.
  - A PLASTIC LAMINATED LAYOUT AND CIRCUIT DIAGRAM SHALL BE AFFIXED TO THE INTERIOR SIDE OF THE ENCLOSURE DOOR.
  - A 2-COLOR ENGRAVED PLASTIC NAMEPLATE, ATTACHED WITH SCREWS, AND ENGRAVED AS INDICATED, SHALL BE PROVIDED FOR EACH MAIN BREAKER.
  - PROVIDE ON LAYOUT AND CIRCUIT DIAGRAM A BILL OF MATERIALS USED WITH CATALOG NUMBERS.
  - REFER TO T.S.C. TYPICAL DRAWING TY-1TSC-400\*20 FOR POLE MOUNTED DISCONNECT MOUNTING DETAILS.
  - CONTRACTOR SHALL EXCLUDE EXTRA 30A CIRCUIT BREAKERS AND ASSOCIATED WIRING AT LOCATIONS WHERE IT IS NOT REQUIRED. REFER TO PLAN SHEETS FOR DETAILS.

**CABLE DESIGNATIONS:**  
① 1/C #6 GND

**Edwards AND Kelcey**  
ONE NORTH FRANKLIN  
CHICAGO, IL 60606  
PHONE: (312) 251-3000  
FAX: (312) 251-3015  
WEB: WWW.EKCORP.COM

REVISIONS	
NAME	DATE
REVISION	02/11/05

ILLINOIS DEPARTMENT OF TRANSPORTATION  
F.A.I. 94/90 (DAN RYAN EXPRESSWAY)  
31st STREET to I-57  
120 VOLT ELECTRIC SERVICE  
BOX DETAIL  
SCALE: NOT TO SCALE  
DATE: October 29, 2004  
DRAWN BY: DHI  
CHECKED BY: CS

ESD-02

08/30/21 AM 02/11/2005