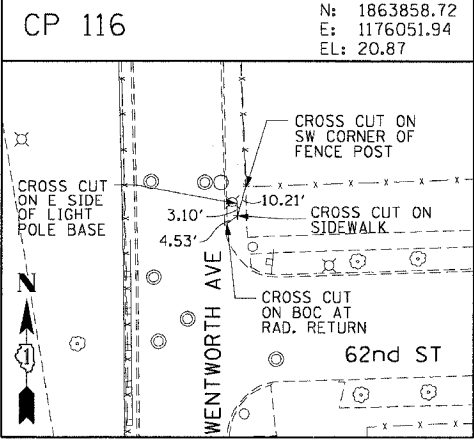
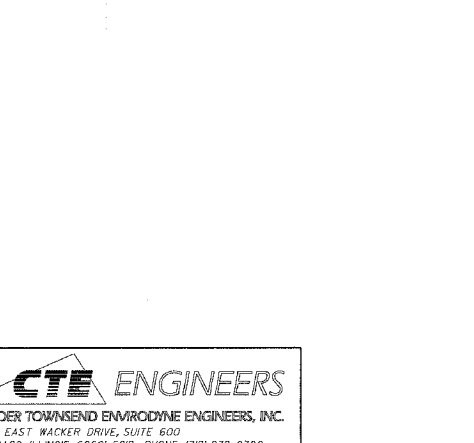
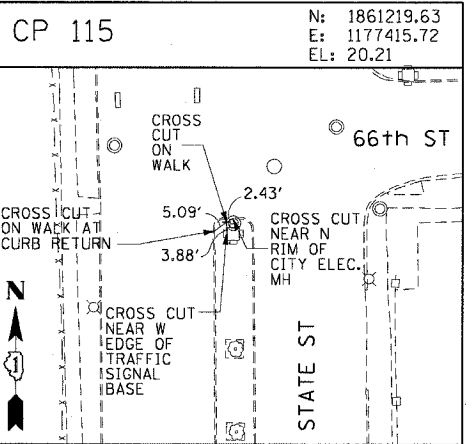
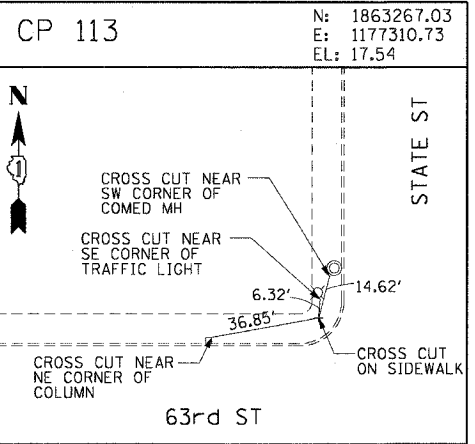
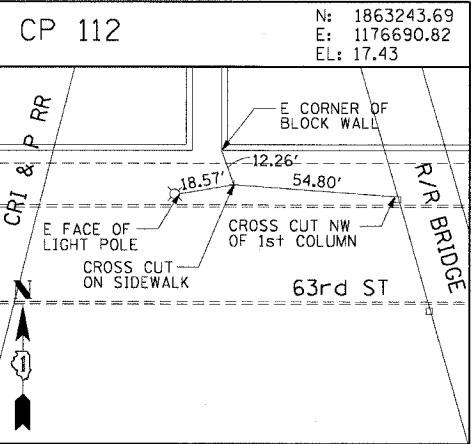
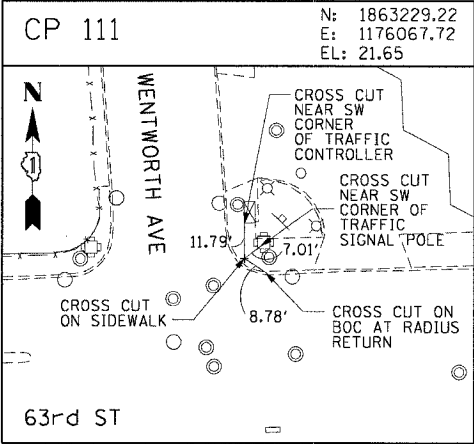
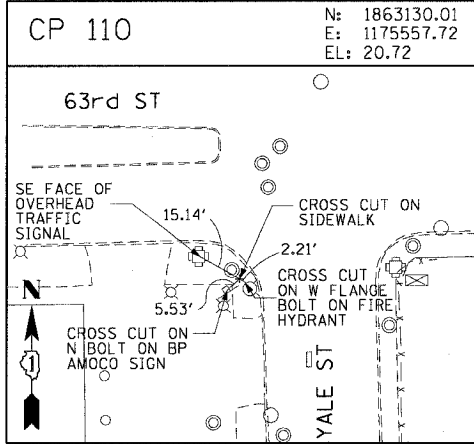
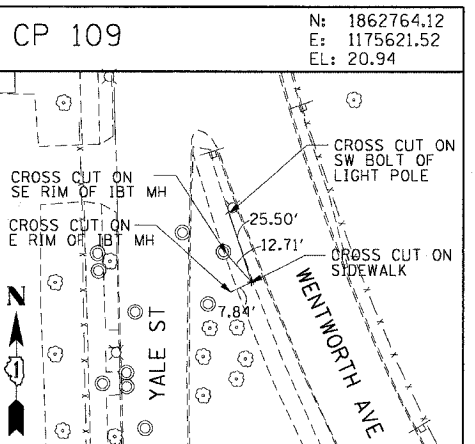
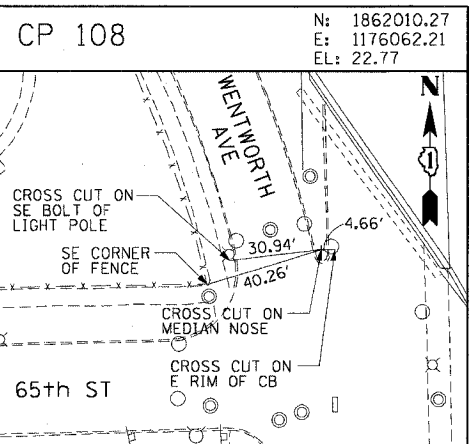
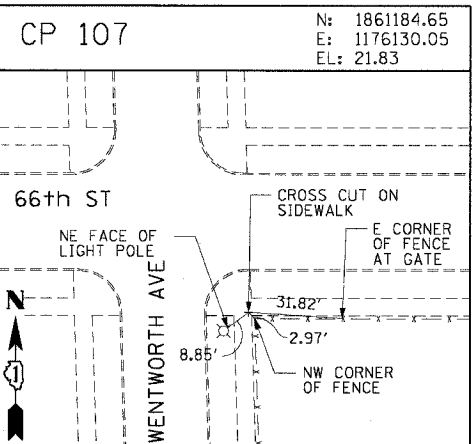
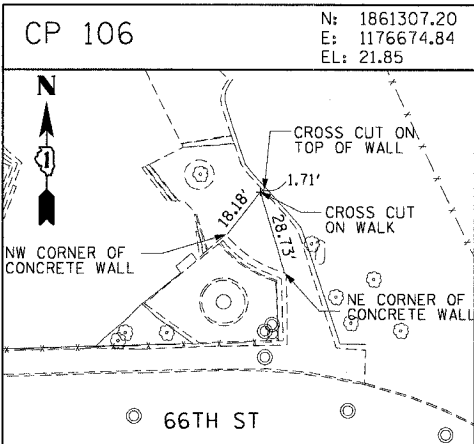
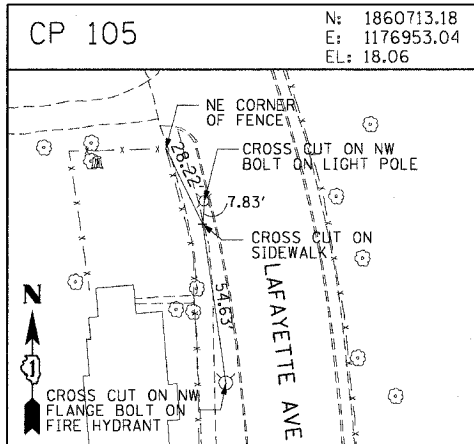
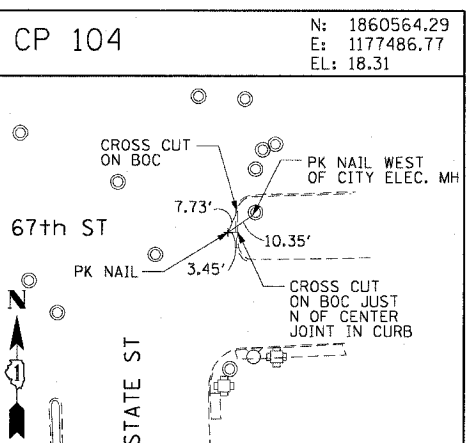
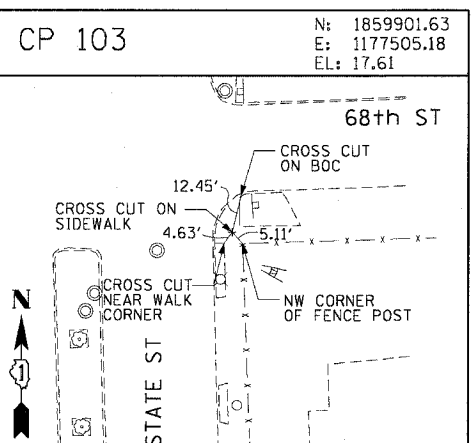
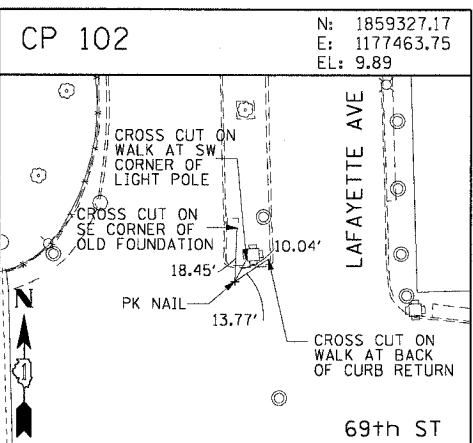
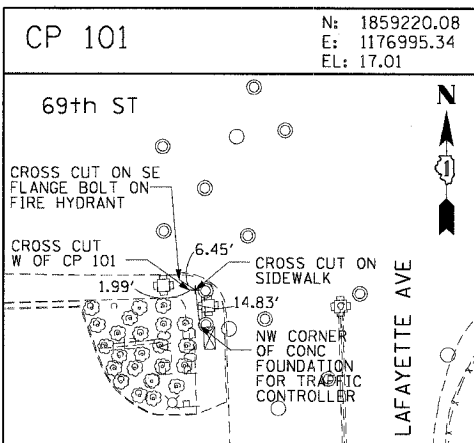
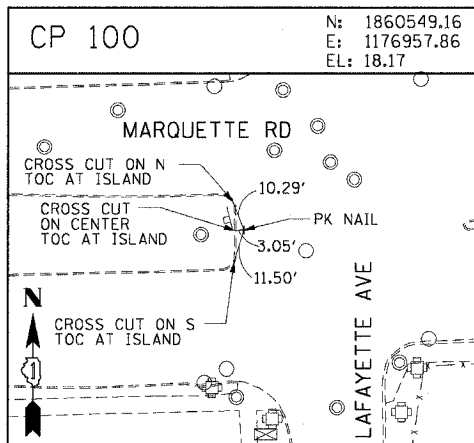


F.A.I. RTE.	SECTION	COUNTY	TOTAL SHEETS	SHEET NO.
90/94	2004-067L	COOK	35	16
STA.	TO STA.			
FED. ROAD DIST. NO. 1 ILLINOIS FED. AID PROJECT				
62806				



REVISIONS	
NAME	DATE

ILLINOIS DEPARTMENT OF TRANSPORTATION
F.A.I. 90/94 (DAN RYAN EXPRESSWAY)
59th ST TO 47th ST (FRONTAGE ROAD)
CITY OF CHICAGO LIGHTING CONDUIT & FOUNDATIONS
WELLS STREET

SURVEY TIES AND CONTROL POINTS

SCALE: 1"=30'
DATE: February 11, 2005

DRAWN BY: MRK
CHECKED BY: JAL



02/02/2005 09:01:39 AM \\satchi-n7\p04666-p04666\elect\4-ctrl\9\sh\contract\9a12\005b12012a.dwg