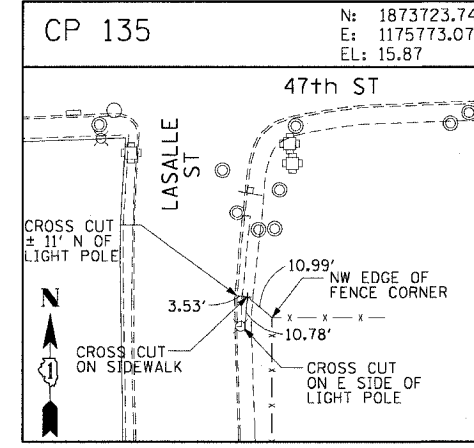
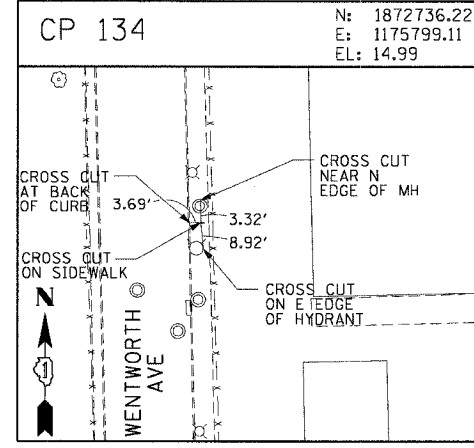
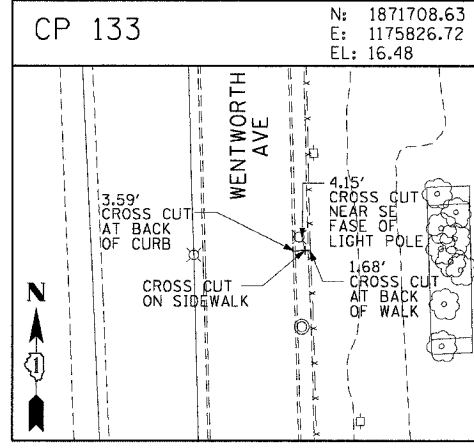
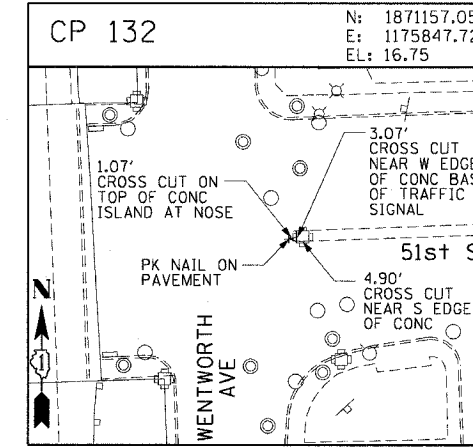
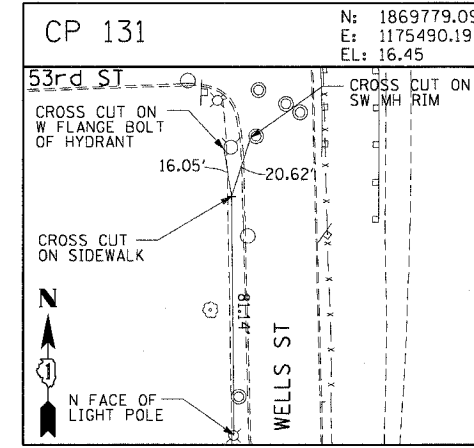
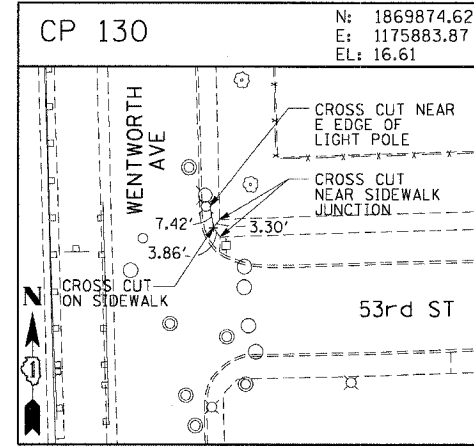
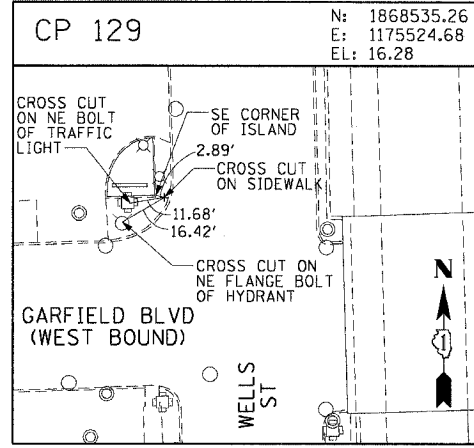
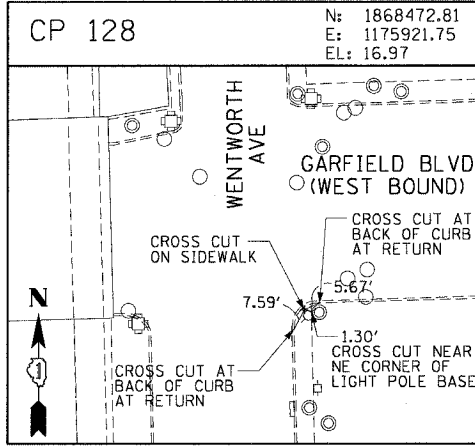
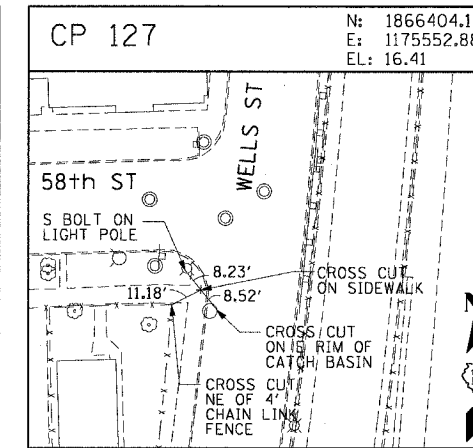
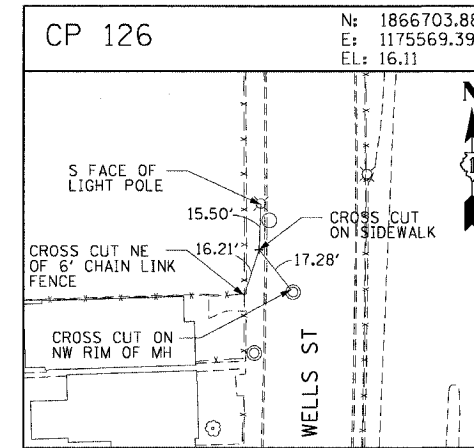
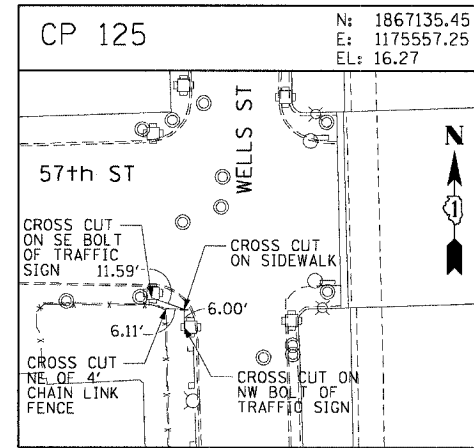
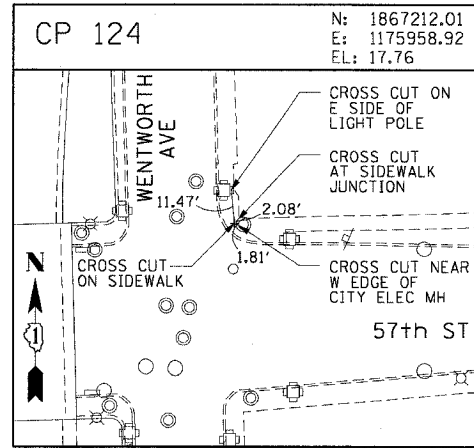
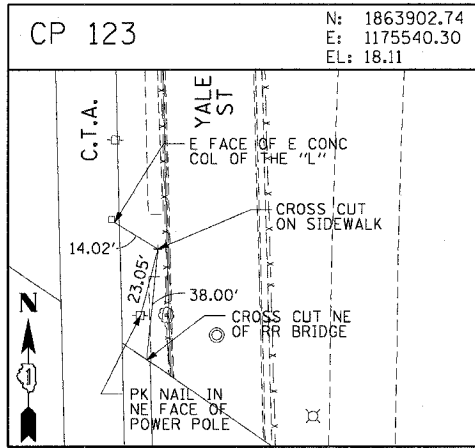
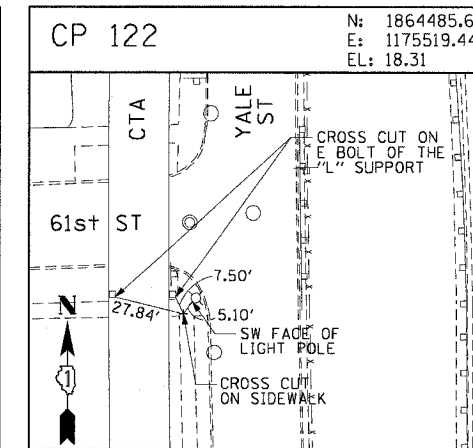
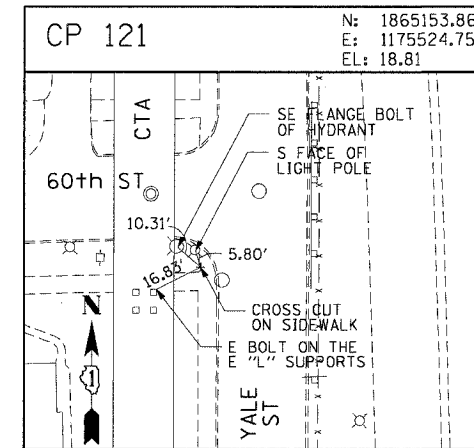
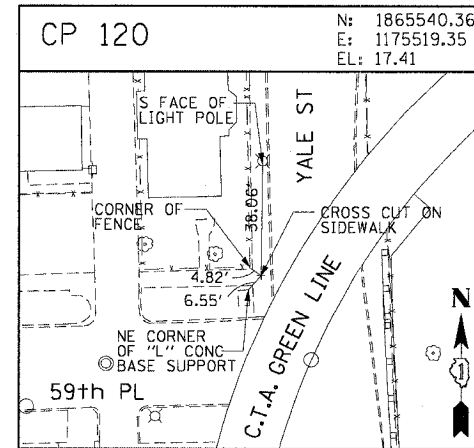
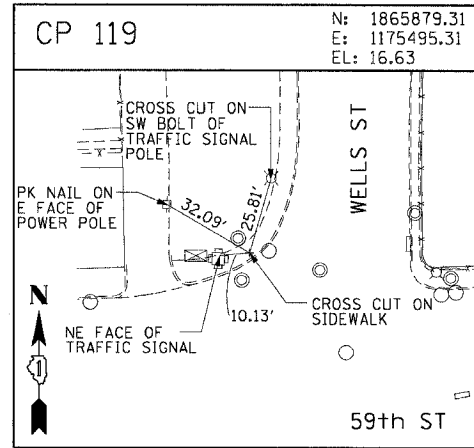
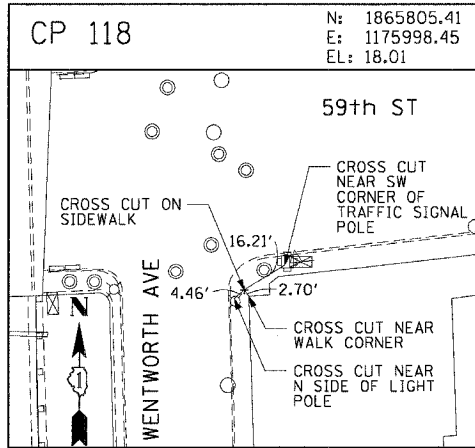


F.A.I. RTL:	SECTION	COUNTY	TOTAL SHEETS	SHEET NO.
90/94	2004-068L	COOK	37	17
STA.	TO STA.			
FED. ROAD DIST. NO. 1 ILLINOIS FED. AID PROJECT				
62807				



REVISIONS	
NAME	DATE

ILLINOIS DEPARTMENT OF TRANSPORTATION
F.A.I. 90/94 (DAN RYAN EXPRESSWAY)
59th ST TO 47th ST (FRONTAGE ROAD)
CITY OF CHICAGO LIGHTING CONDUIT & FOUNDATIONS
WENTWORTH AVENUE

SURVEY TIES AND CONTROL POINTS

SCALE: 1"=30'
DATE: February 11, 2005

DRAWN BY: MRK
CHECKED BY: JAL

V:\green-rt\A40468\40468\elec\A40468\contract\90131\0199\31022a.dwg 02/10/2005 09:09:05 AM