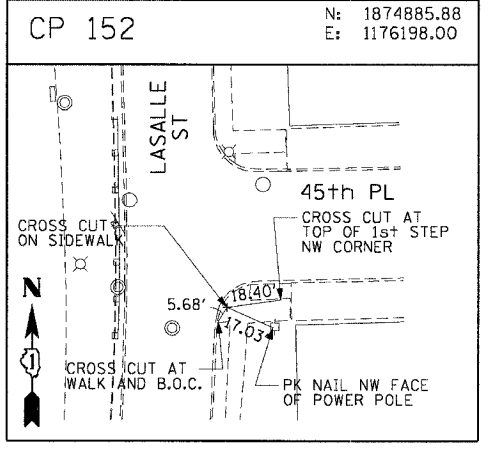
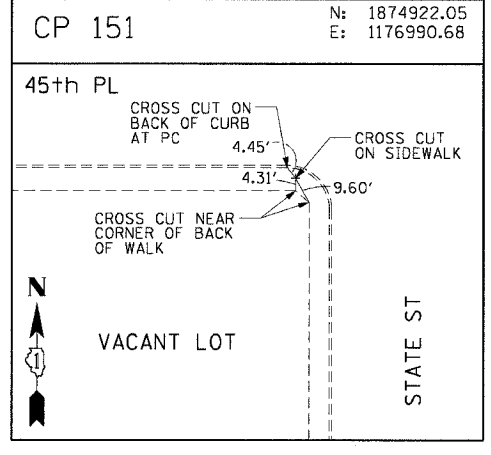
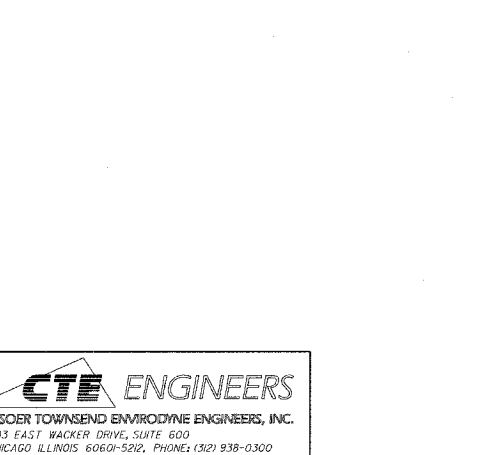
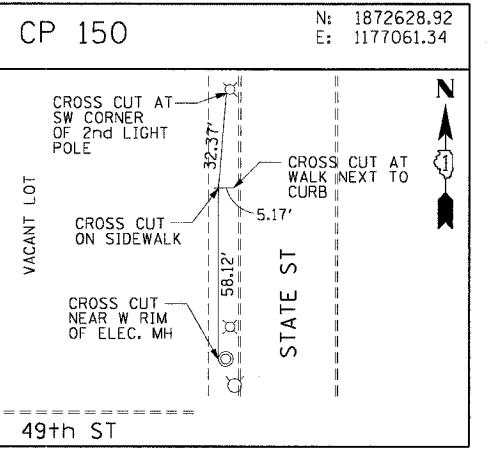
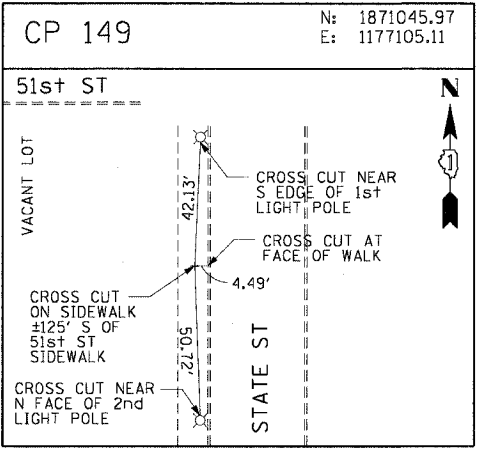
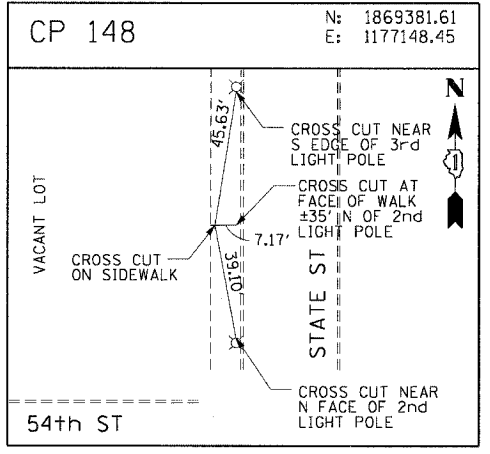
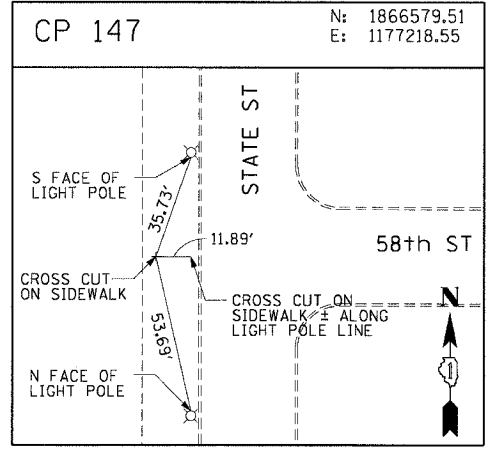
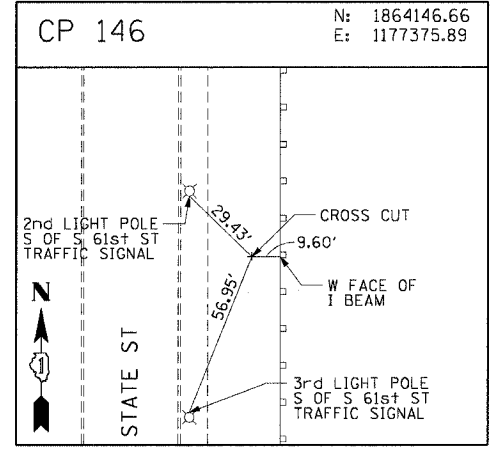
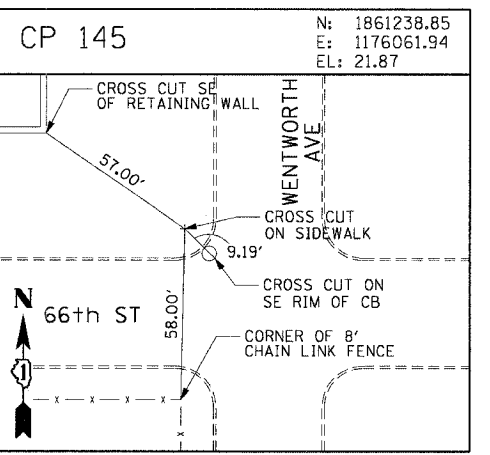
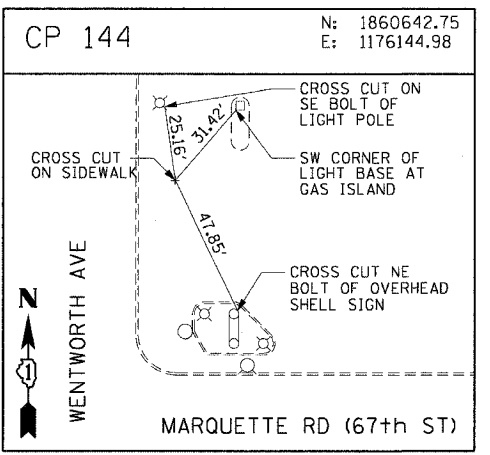
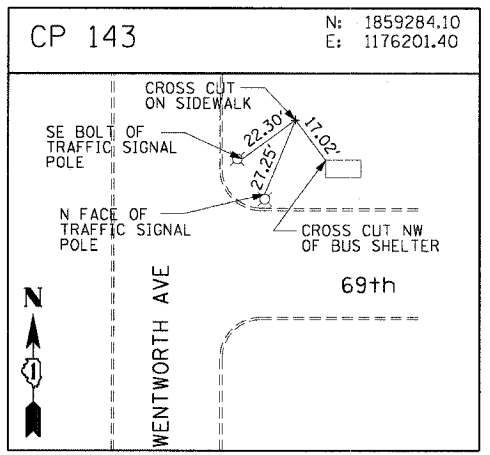
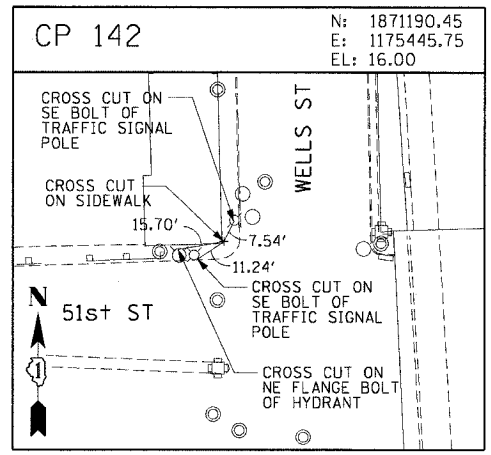
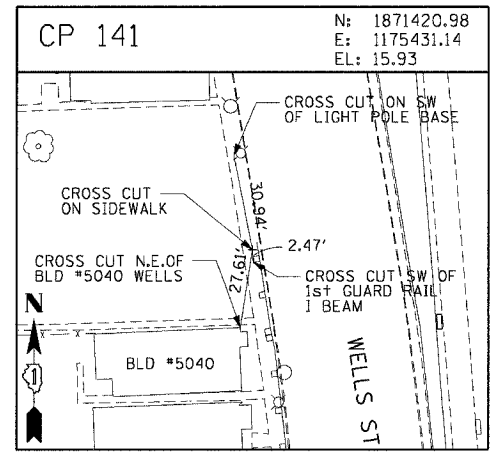
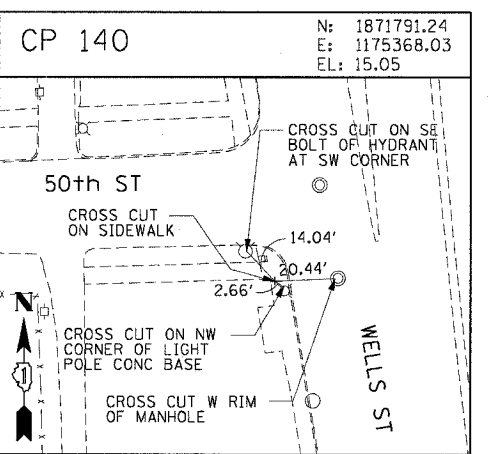
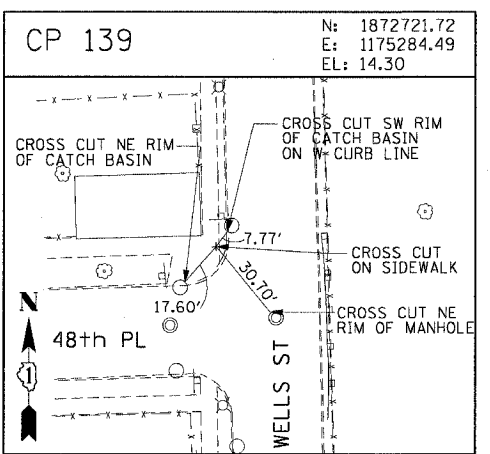
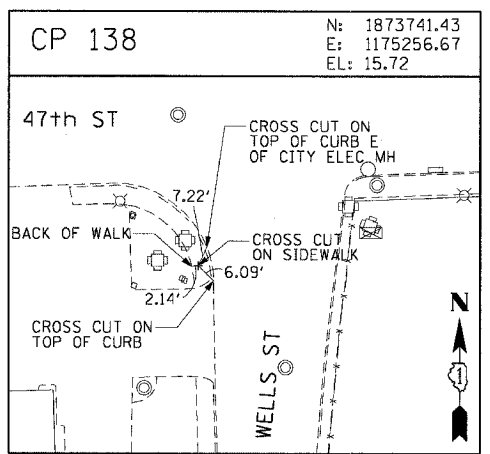
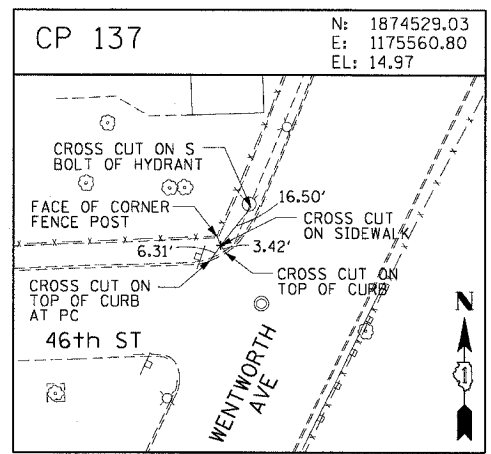
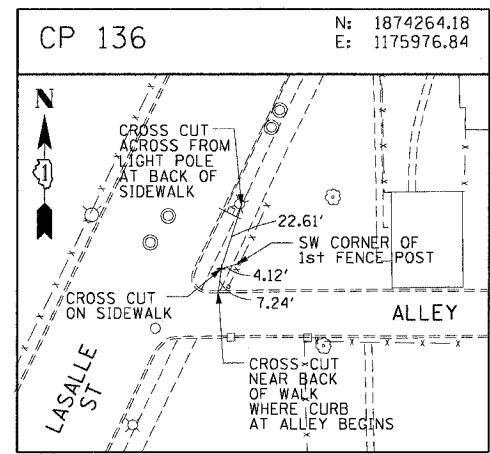


F.A.I. RTE.	SECTION	COUNTY	TOTAL SHEETS	SHEET NO.
90/94	2004-06BL	COOK	37	18
STA.		TO STA.		
FED. ROAD DIST. NO. 1 ILLINOIS FED. AID PROJECT				
62807				



CTE ENGINEERS
CONSOR TOWNSEND ENVIRONMENTAL ENGINEERS, INC.
303 EAST WACKER DRIVE, SUITE 600
CHICAGO, ILLINOIS 60601-5202, PHONE: (312) 938-0300

REVISIONS	
NAME	DATE

ILLINOIS DEPARTMENT OF TRANSPORTATION
F.A.I. 90/94 (DAN RYAN EXPRESSWAY)
59th ST TO 47th ST (FRONTAGE ROAD)
CITY OF CHICAGO LIGHTING CONDUIT & FOUNDATIONS
WENTWORTH AVENUE

SURVEY TIES AND CONTROL POINTS

SCALE: 1"=30'
DATE: February 11, 2005

DRAWN BY: MRK
CHECKED BY: JAL

V:\cadd\117\117-040465\117-040465-01.dwg 11/14/05 11:30:32 AM