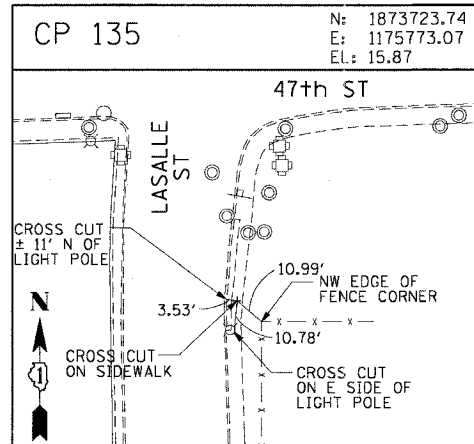
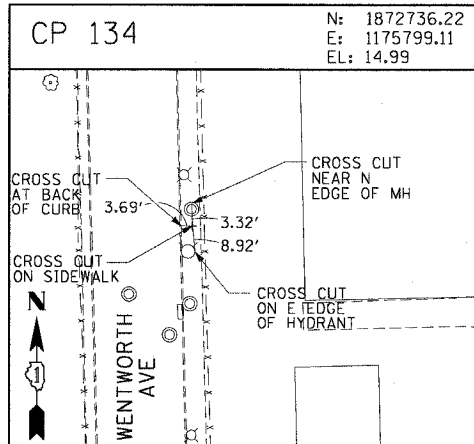
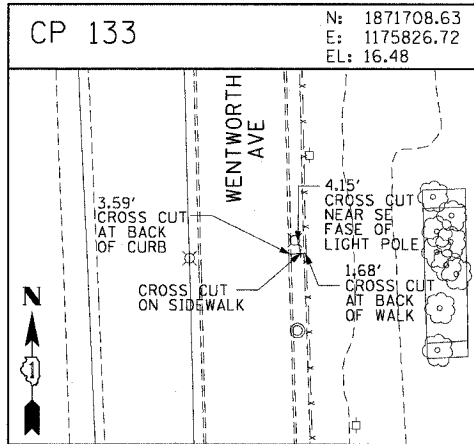
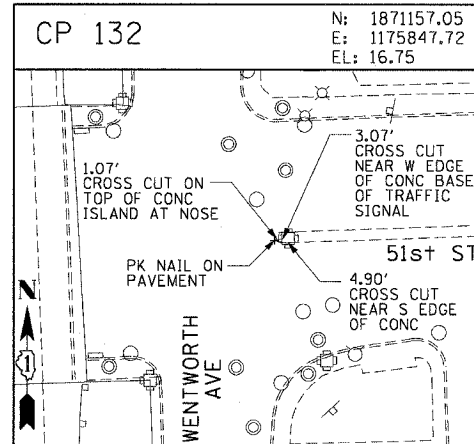
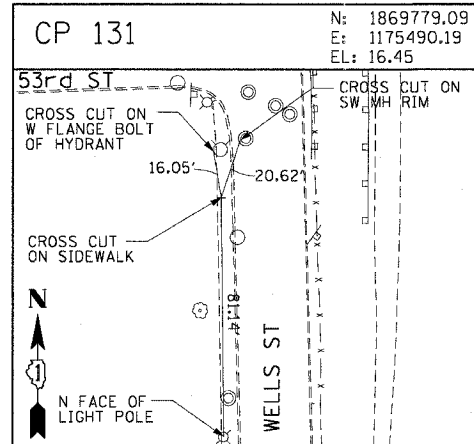
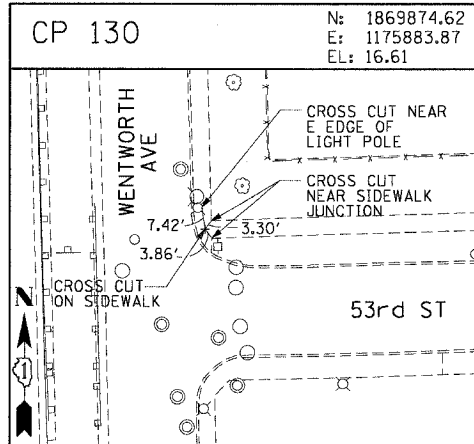
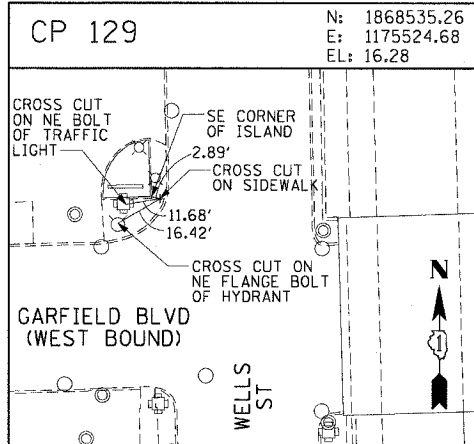
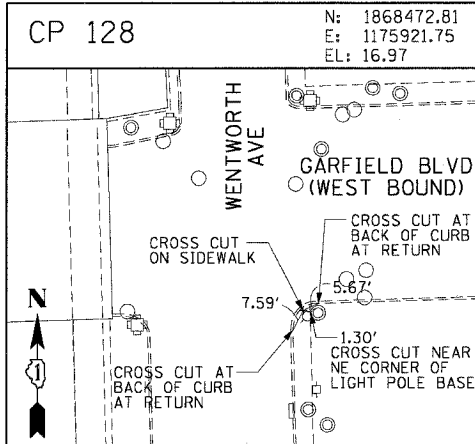
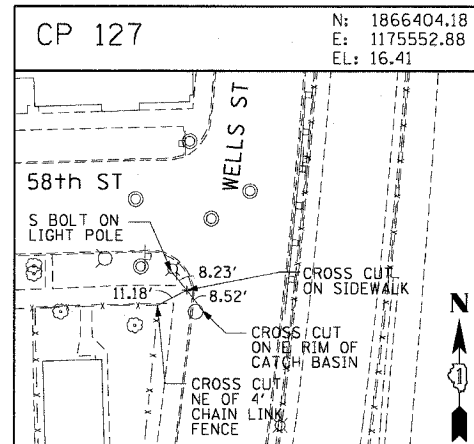
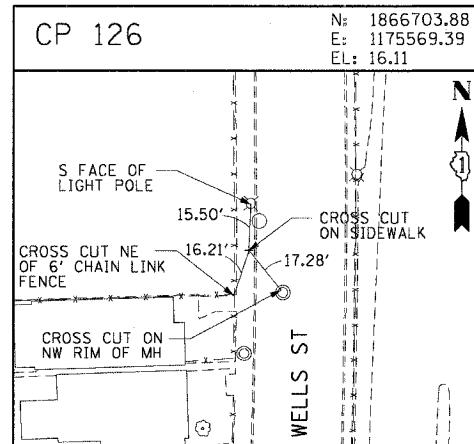
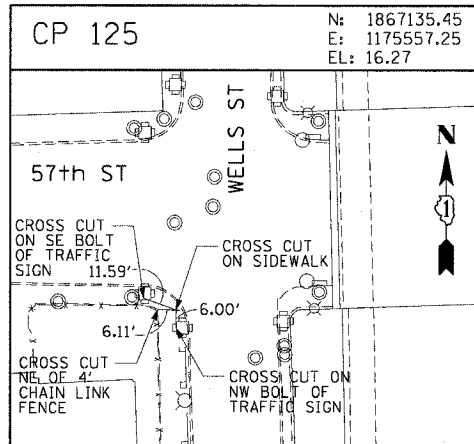
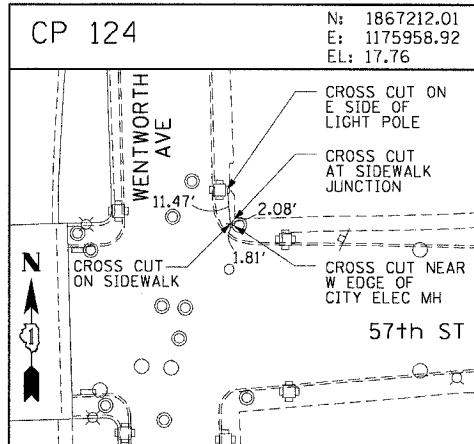
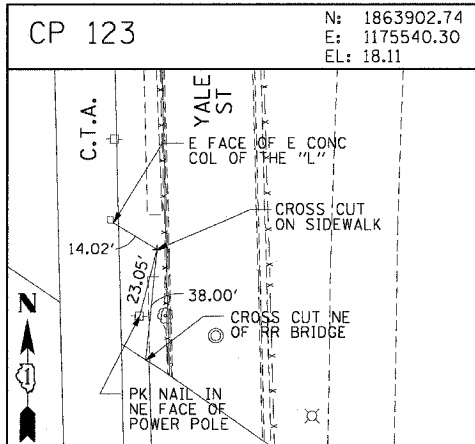
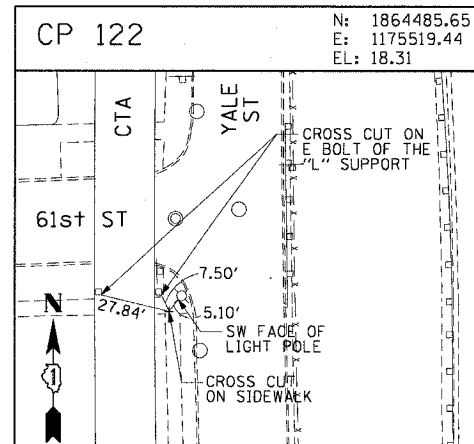
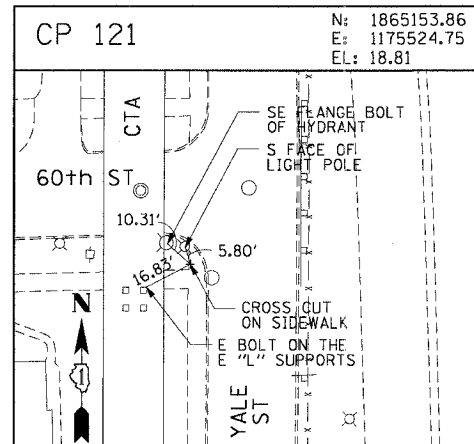
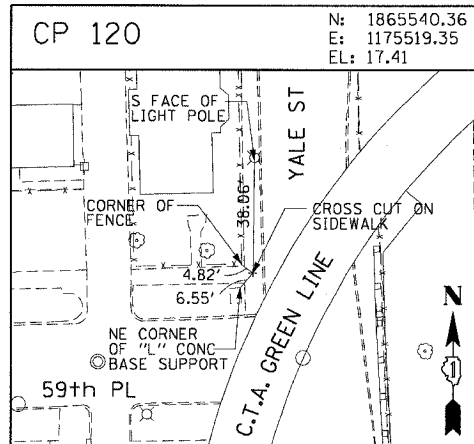
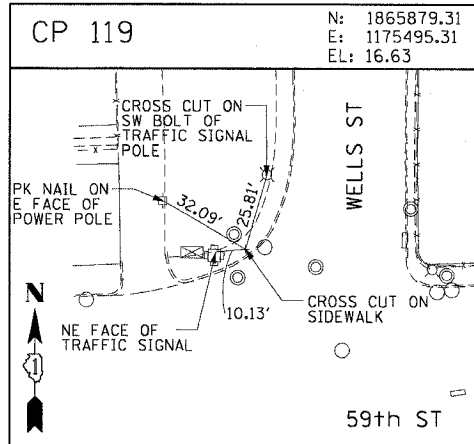
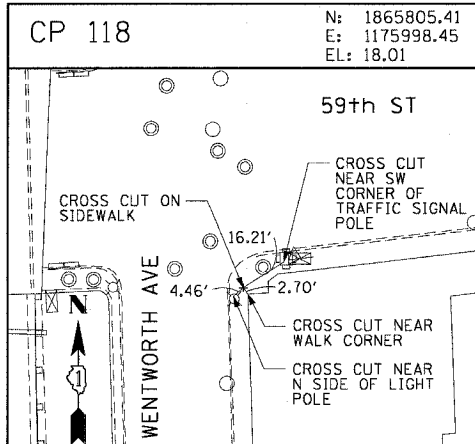


F.A.I. RTE.	SECTION	COUNTY	TOTAL SHEETS	SHEET NO.
90/94	2004-101 I	COOK	31	14
STA.		TO STA.		
FED. ROAD DIST. NO. 1		ILLINOIS FED. AID PROJECT		
62842				



CTE ENGINEERS
CONSER TOWNSEND ENVIRONMENTAL ENGINEERS, INC.
303 EAST WACKER DRIVE, SUITE 600
CHICAGO, ILLINOIS 60601-5920, PHONE: (312) 938-0300

REVISIONS	
NAME	DATE

ILLINOIS DEPARTMENT OF TRANSPORTATION
F.A.I. 90/94 (DAN RYAN EXPRESSWAY)
63rd ST TO 59th ST (FRONTAGE ROADS)
CITY OF CHICAGO LIGHTING CONDUIT & FOUNDATIONS
WELLS STREET AND WENTWORTH AVENUE
SURVEY TIES AND CONTROL POINTS

SCALE: 1"=30'
DATE: February 11, 2005
DRAWN BY: MRK
CHECKED BY: JAL

V:\cibech-nt\p40468\p40468a\elec\14-cmtr\9\stn\cont\9-2\10222.ctb